

# There's no such thing as the poop fairy.



**It's up to YOU to pick up after your dog.**

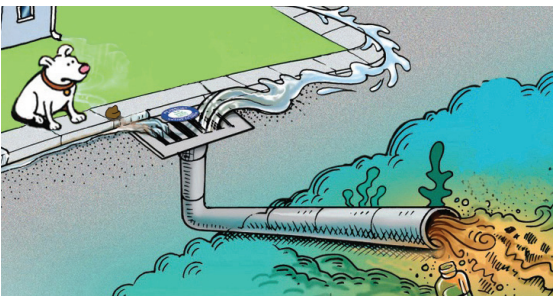
When dog poop is left on the ground, rain and snow melt wash the bacteria and parasites from the waste into storm drains, which empty directly into local streams, ponds, and lakes.

Bacteria and parasites from dog waste cause water quality problems for drinking water resources, recreation, and wildlife.

**Every time you walk your dog, please:**

- carry a bag to pick up pet waste,
- dispose of waste in a trash can,
- and never toss anything down a storm drain!

*Your Department of Public Works thanks you for helping to keep local waterways clean.*



Not only is dog waste gross to look at, it can cause significant health issues, including:

- ***Campylobacteriosis:*** A bacterial infection that causes diarrhea in humans.
- ***Giardiasis:*** A protozoan infection of the small intestine that can cause diarrhea, cramping, fatigue, and weight loss.
- ***Salmonellosis:*** Symptoms include fever, muscle aches, headache, vomiting & diarrhea.
- ***Toxocariasis:*** An animal to human infection that is caused by roundworms found in the intestines of dogs. The parasite can cause vision loss, rash, fever or cough, and is a particular threat to children exposed to parasite eggs in sand and soil.

An easy way to avoid these health issues is to just pick up after your dog. It's a simple thing to do and it makes a big difference for all of us!



Learn how we're improving water quality in your community.

[YourCleanWater.org](http://YourCleanWater.org)

Your city or town is part of the Neponset Stormwater Partnership, which aims to help communities reduce water pollution, and save money while doing so.

Please contact the Neponset River Watershed Association for more information.  
stormwater@neponset.org (781) 575-0354 x304