

TRAFFIC CALMING
ELIGIBLE ROADWAYS MAP



TOWN OF DEDHAM
Norfolk County
Massachusetts

Legend

— ELIGIBLE - Local (Residential) Roadway

INELIGIBLE Roadways

Owned By

— Private

— DCR

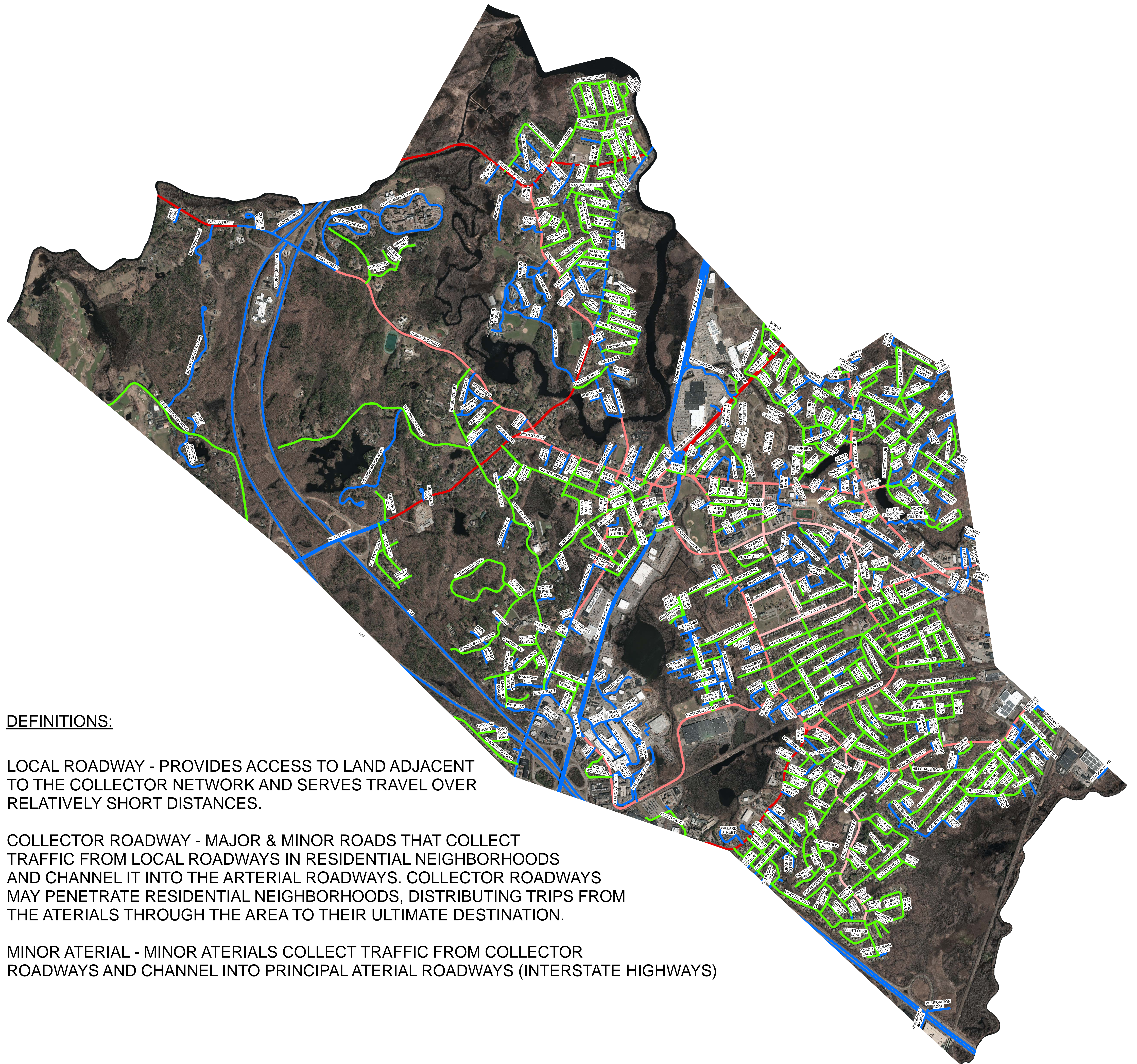
— State

Roadway Class

— Public - Minor Arterial

— Public - Major Collector

— Public - Minor Collector

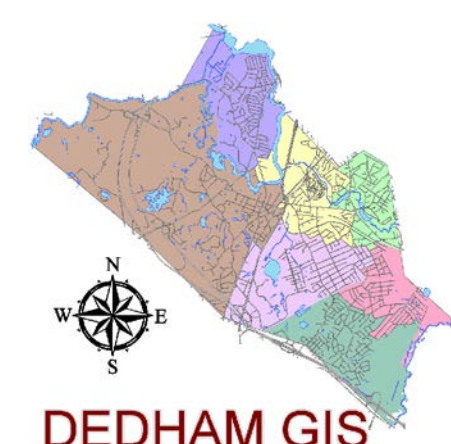


DEFINITIONS:

LOCAL ROADWAY - PROVIDES ACCESS TO LAND ADJACENT TO THE COLLECTOR NETWORK AND SERVES TRAVEL OVER RELATIVELY SHORT DISTANCES.

COLLECTOR ROADWAY - MAJOR & MINOR ROADS THAT COLLECT TRAFFIC FROM LOCAL ROADWAYS IN RESIDENTIAL NEIGHBORHOODS AND CHANNEL IT INTO THE ARTERIAL ROADWAYS. COLLECTOR ROADWAYS MAY PENETRATE RESIDENTIAL NEIGHBORHOODS, DISTRIBUTING TRIPS FROM THE ARTERIALS THROUGH THE AREA TO THEIR ULTIMATE DESTINATION.

MINOR ARTERIAL - MINOR ARTERIALS COLLECT TRAFFIC FROM COLLECTOR ROADWAYS AND CHANNEL INTO PRINCIPAL ARTERIAL ROADWAYS (INTERSTATE HIGHWAYS)



This document is intended for
Town of Dedham planning and
analysis purposes only.

Produced by:
The Town of Dedham
Engineering Department