

Pedestrian Improvements along Elm Street and Rustcraft Road

Dedham | Contract No. 113676

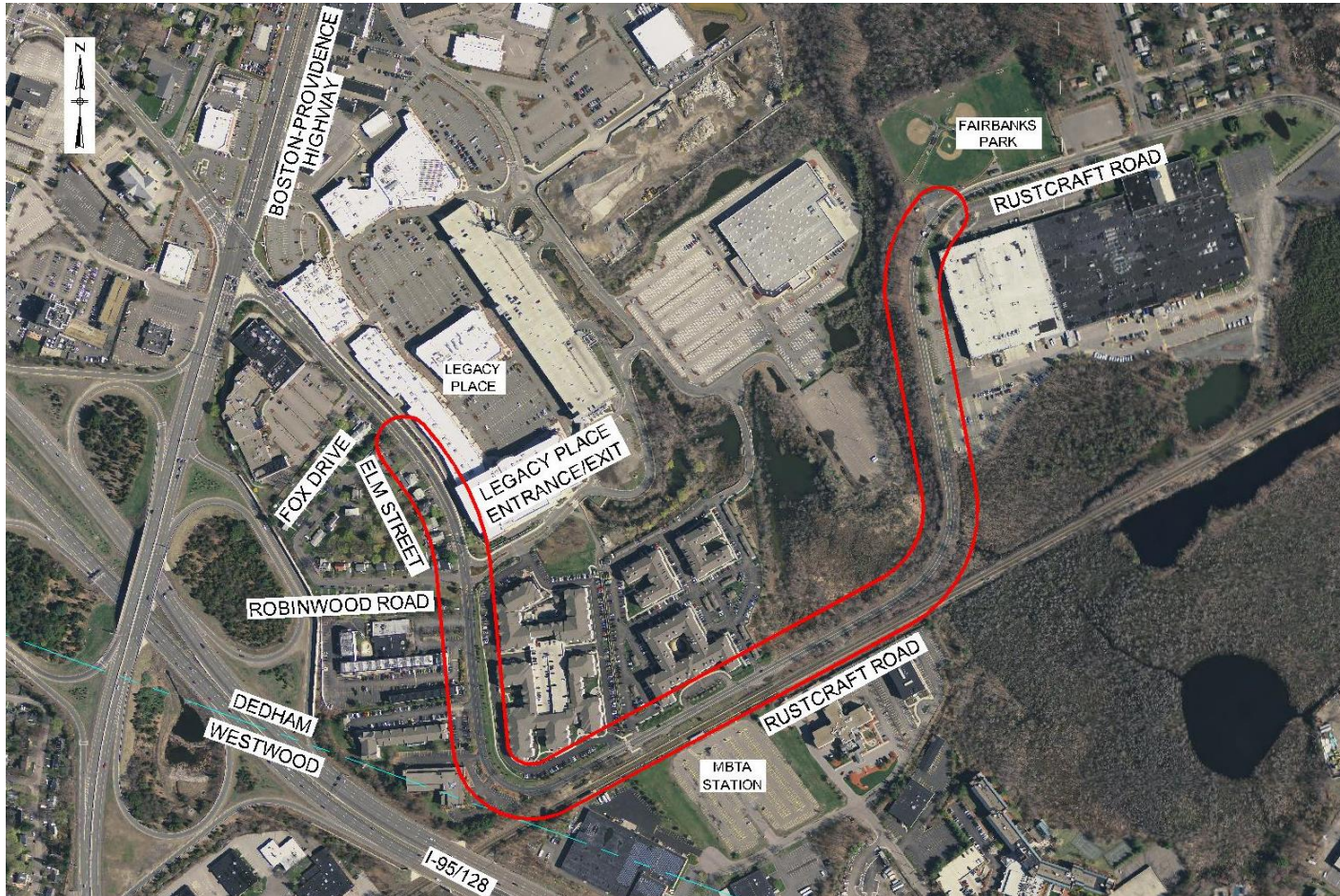
VIRTUAL PUBLIC MEETING PRESENTATION

April 28, 2021 | 6:30 PM

Agenda

- Welcome and Introductions
- Project Overview
- Construction Schedule
- Traffic Impacts
- Work Hours
- Question & Answers

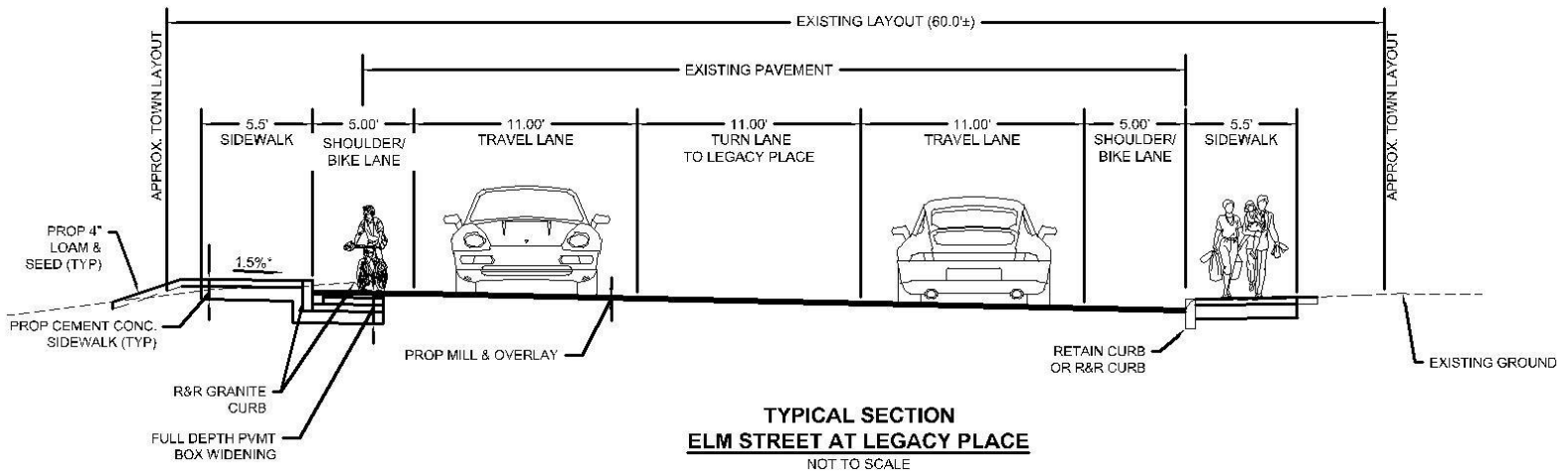
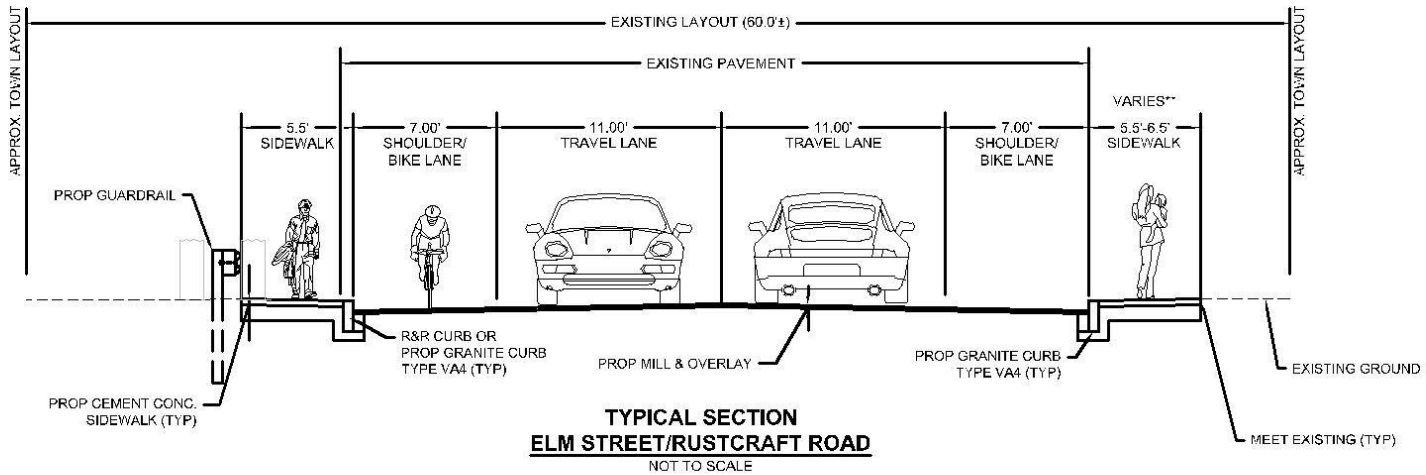
Project Area



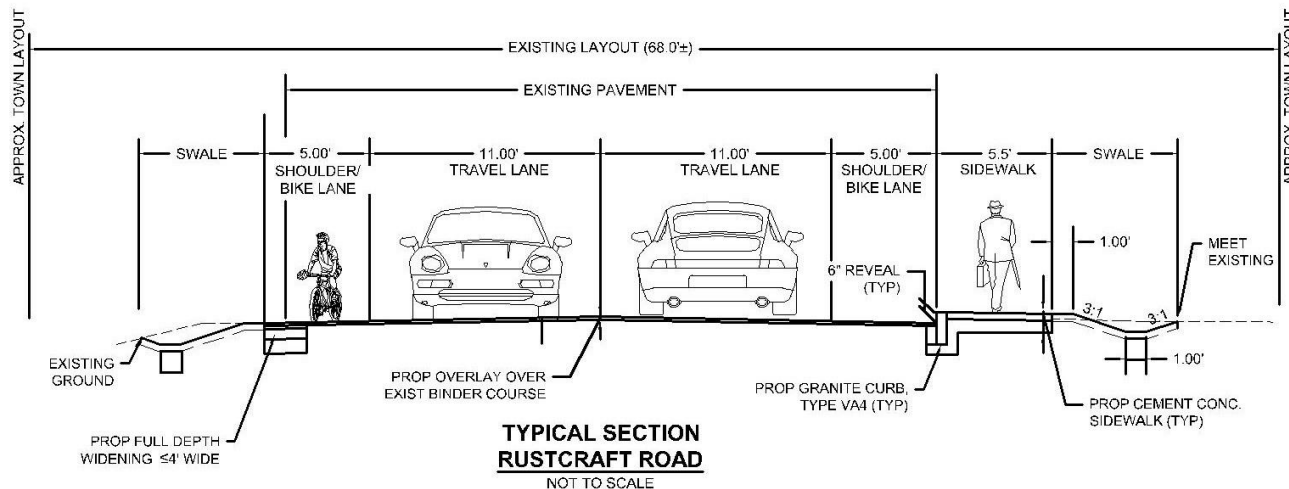
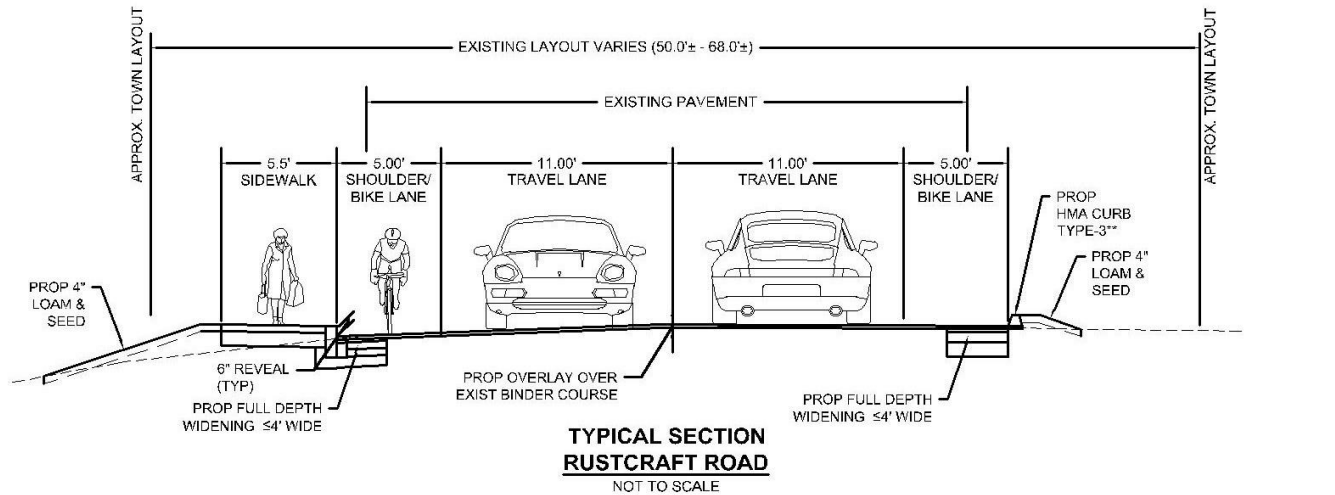
Project Overview

Issue	Improvement
<ul style="list-style-type: none"> Deficient pedestrian accommodations 	<ul style="list-style-type: none"> ADA compliant sidewalk Pedestrian curb ramps New crosswalks for improved connectivity New Rectangular Rapid Flashing Beacons (RRFB) for crosswalks
<ul style="list-style-type: none"> No designated bicycle facilities 	<ul style="list-style-type: none"> 5 to 7-foot-wide bicycle lane Proper signage
<ul style="list-style-type: none"> Intersection safety & capacity Issues 	<ul style="list-style-type: none"> Install traffic control system and crosswalks
<ul style="list-style-type: none"> Deficient drainage conditions 	<ul style="list-style-type: none"> Stormwater improvements

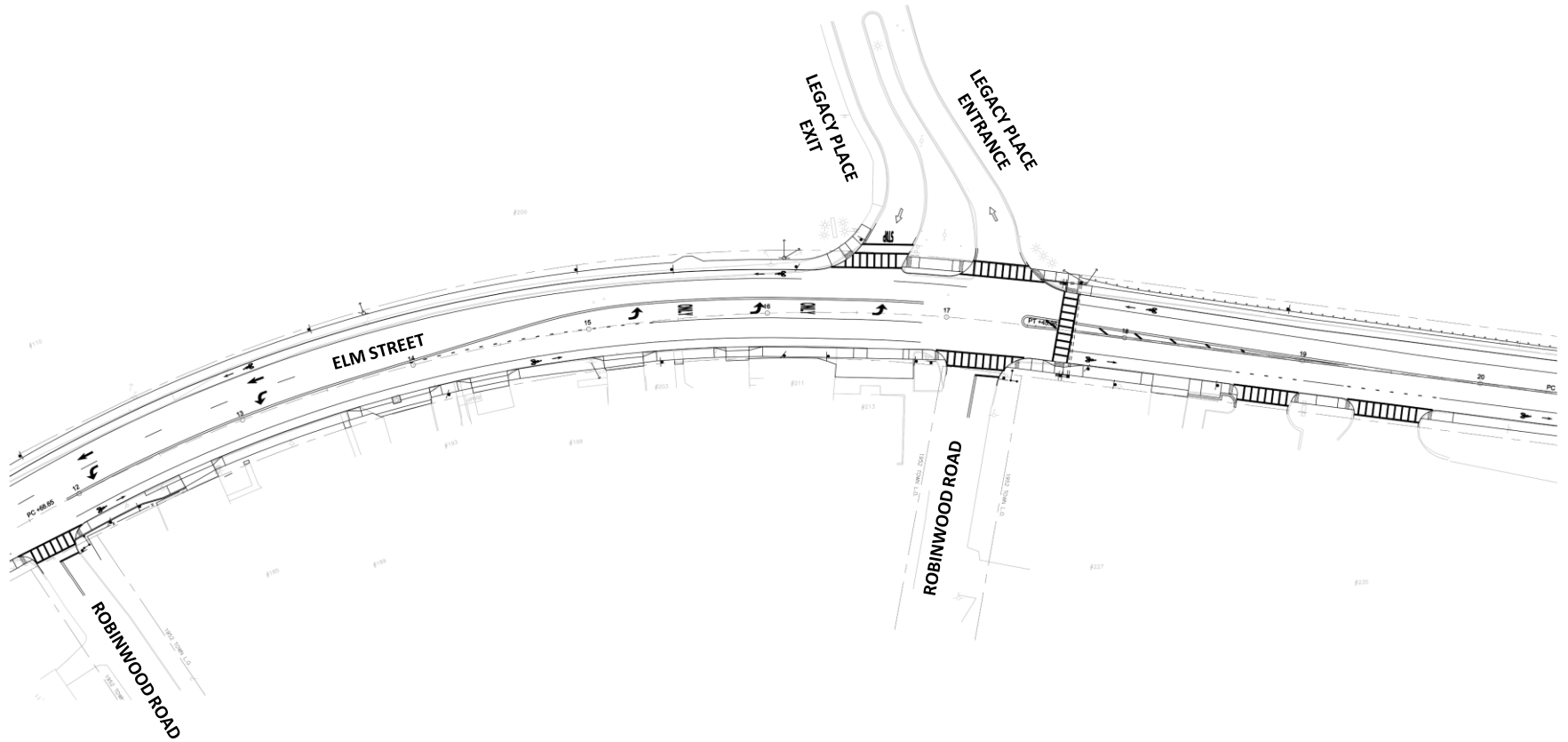
Elm Street Cross Section



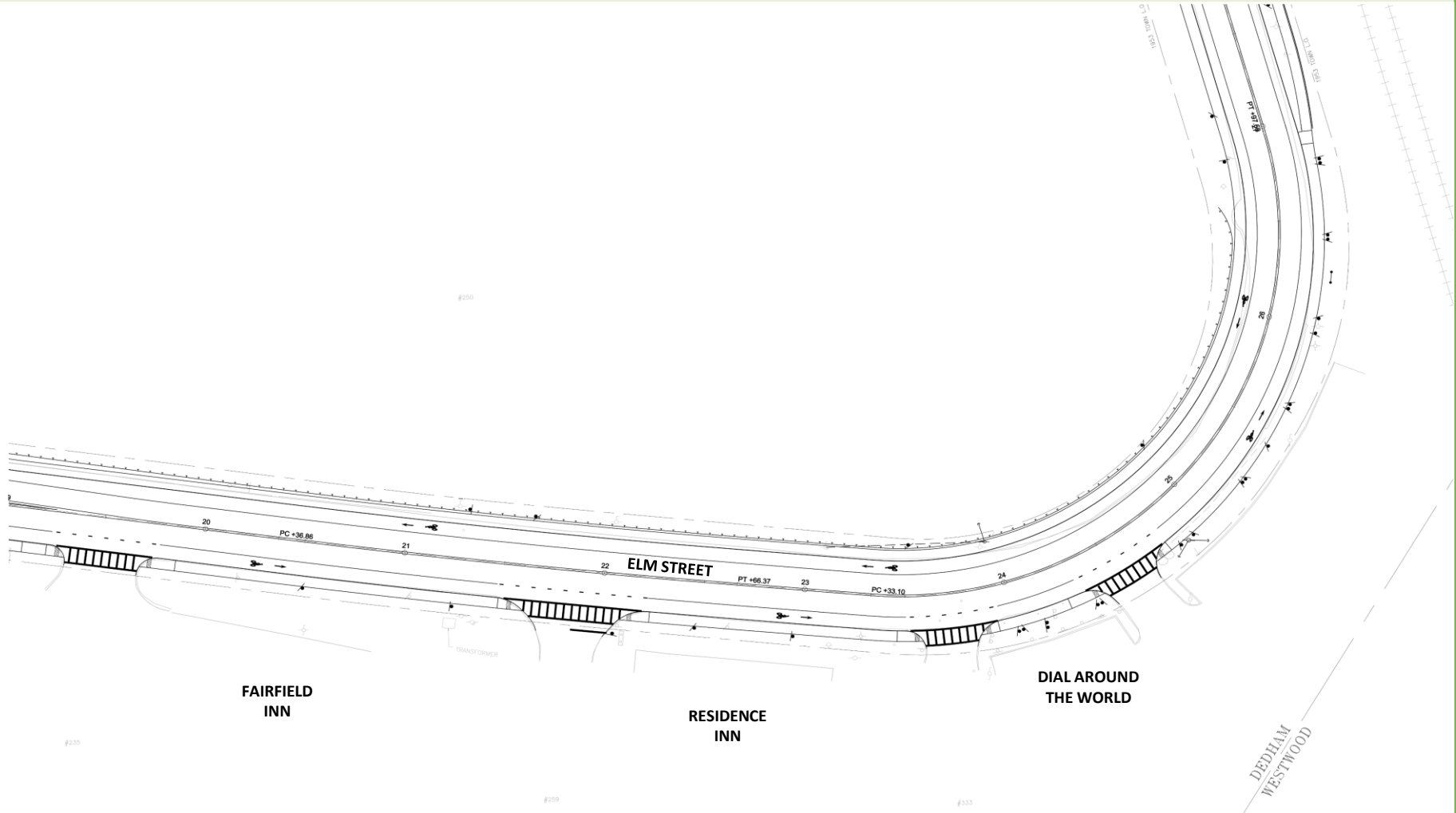
Rustcraft Road Cross Section



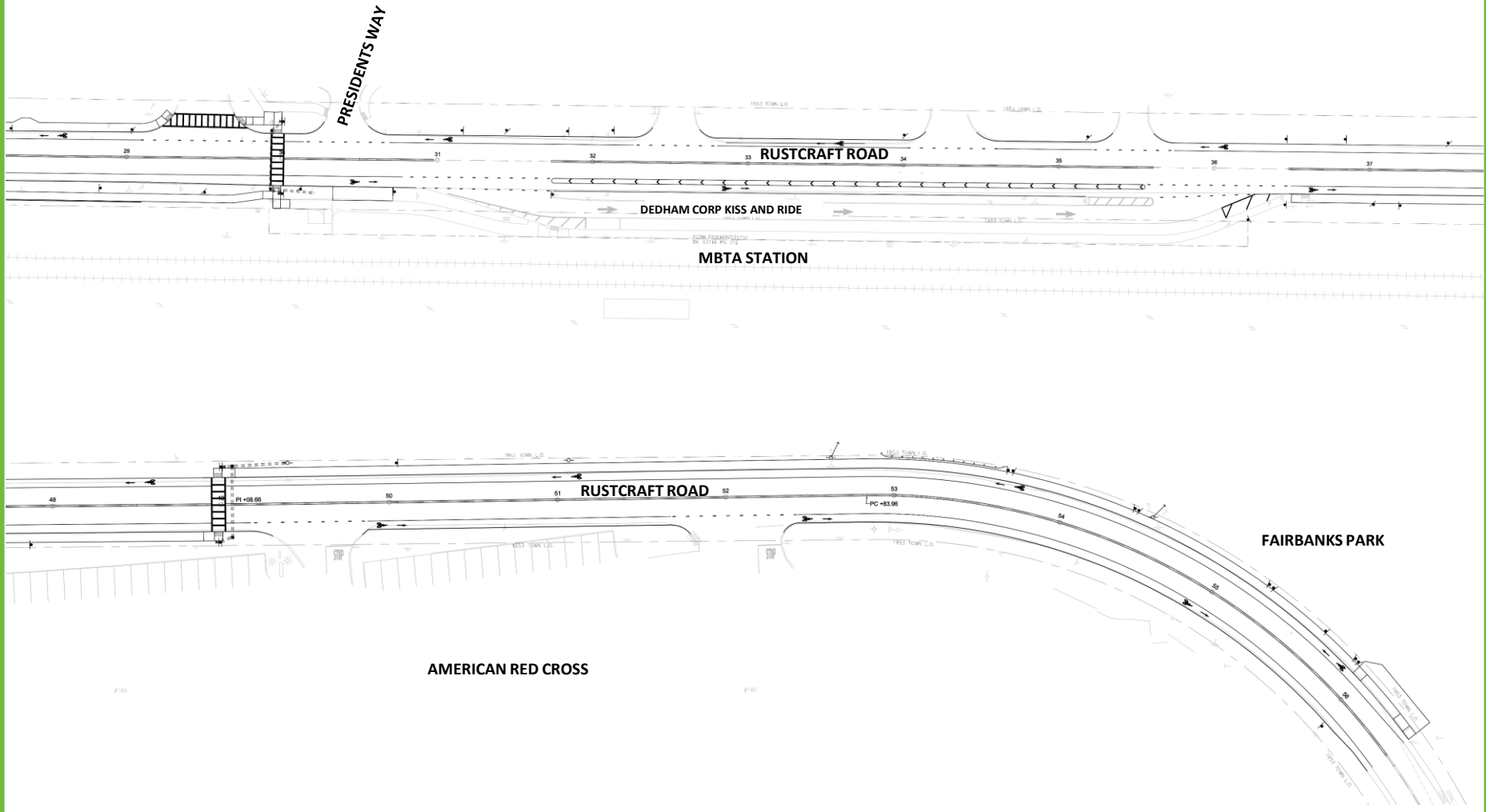
Elm St/Rustcraft Rd Improvements



Elm St/Rustcraft Rd Improvements cont.



Elm St/Rustcraft Rd Improvements cont.



Construction Schedule

- **Early Construction Activities [May 2021]**
 - Underground Electrical Conduit Relocation
 - Underground Gas Main Relocation
 - Overhead Utility Relocations
- **R M Pacella - Construction Activities Commence [June 2021]**
 - Construction Signage
 - Tree Clearing and Trimming
 - Invasive Plant Management
 - Drainage Improvements
 - Roadway Widening, Curbing and Sidewalk Installation

Traffic Impacts

- One Lane Alternating Travel on Rustcraft Road and Elm Street throughout the Workday.
- Driveway Access may be Interrupted during Roadway and Sidewalk Placement Activities [48 hour notification will be provided to all affected properties]
- Police Details will be Utilized to Maintain Safe Travel throughout the Workday
- Pedestrian and Bicycle Access will be Maintained

Work Hours

- **Typical Work Shift:**
 - Monday through Friday
 - 7:00 AM to 3:30 PM each day
 - One Lane Alternating Traffic between 9:00 AM and 3:00 PM
- **R. M. Pacella, Inc. may Solicit the Local Community through MassDOT for Occasional Overnight Work Shift to Minimize Traffic Obstructions during Roadway Paving Operations**

Questions & Answers

- **Contact**

MassDOT RE Field Office:

- Donny Dailey, MassDOT Government Affairs
 - Donny.dailey2@dot.state.ma.us
- Laura Montiel, Resident Engineer
 - Laura.Montiel@dot.state.ma.us