

BRIDGE ST CORRIDOR PLAN

Dedham, MA



architecture
urban design

GAMBLE
ASSOCIATES

December 2022

DIMITRIA SULLIVAN - Select Board

MICHAEL PODOLSKI - Planning Board

JIM SULLIVAN – Precinct 2 Chair

JACK KELLIHER – Precinct 2 Member

MARLILEE DEMPSEY – At-Large Member

HYACINTHE FALLINGS – At-Large Member

LEAH KANE – At-Large Member

JUDY MASSEY – At-Large Member

MARSHA MEDALIE – At-Large Member

MICHAEL D'ENTREMONT – Ex-Officio Member

Committee Charge

Bridge Street Corridor Advisory Committee

The Advisory Committee will collaborate with Town departments, elected and appointed officials, a consultant team and the Dedham community for the purpose of recommending to the Planning Board a roadmap for the future growth and preservation of the Bridge Street Corridor.

Upon completion, the plan shall be submitted to the Planning Board for review. Following a review of the plan and after receiving public input, the Planning Board, shall determine next steps.

Duration

The Advisory Committee's duration is anticipated to last not more than one year. Upon submission of the study Final Report and recommendations to the Planning Board, the Committee's work shall be completed.

Responsibilities and Expectations

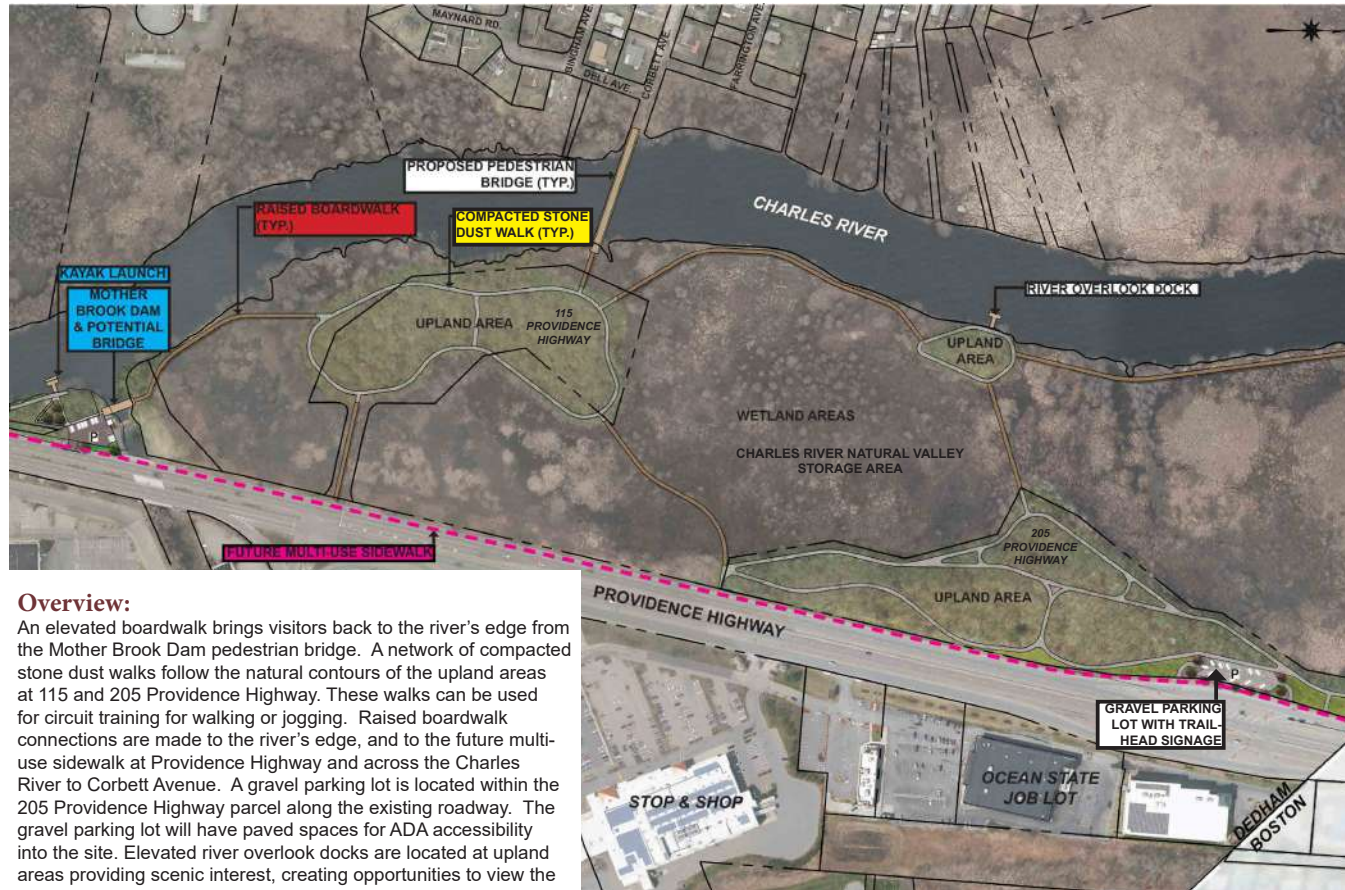
- Provide input and guidance to the town consultant
- Facilitate and encourage public participation
- Attend approximately five (5) in-person committee meetings and attend an estimated two (2) in-person public meetings
- Complete work outside of committee meetings
- Participate in developing the Final Report
- Recommendations for submission to the Planning Board

Engagement Techniques



- Flyers
- Email Blast
- Town Website Promotion
- Neighborhood Mailing
- Senior Center Newsletter
- Social Media Promotions
- Dedham Times
- Share w/Boards/Committees
- TBD

Refined Preferred Concept Plan—“Riverside Boardwalk”

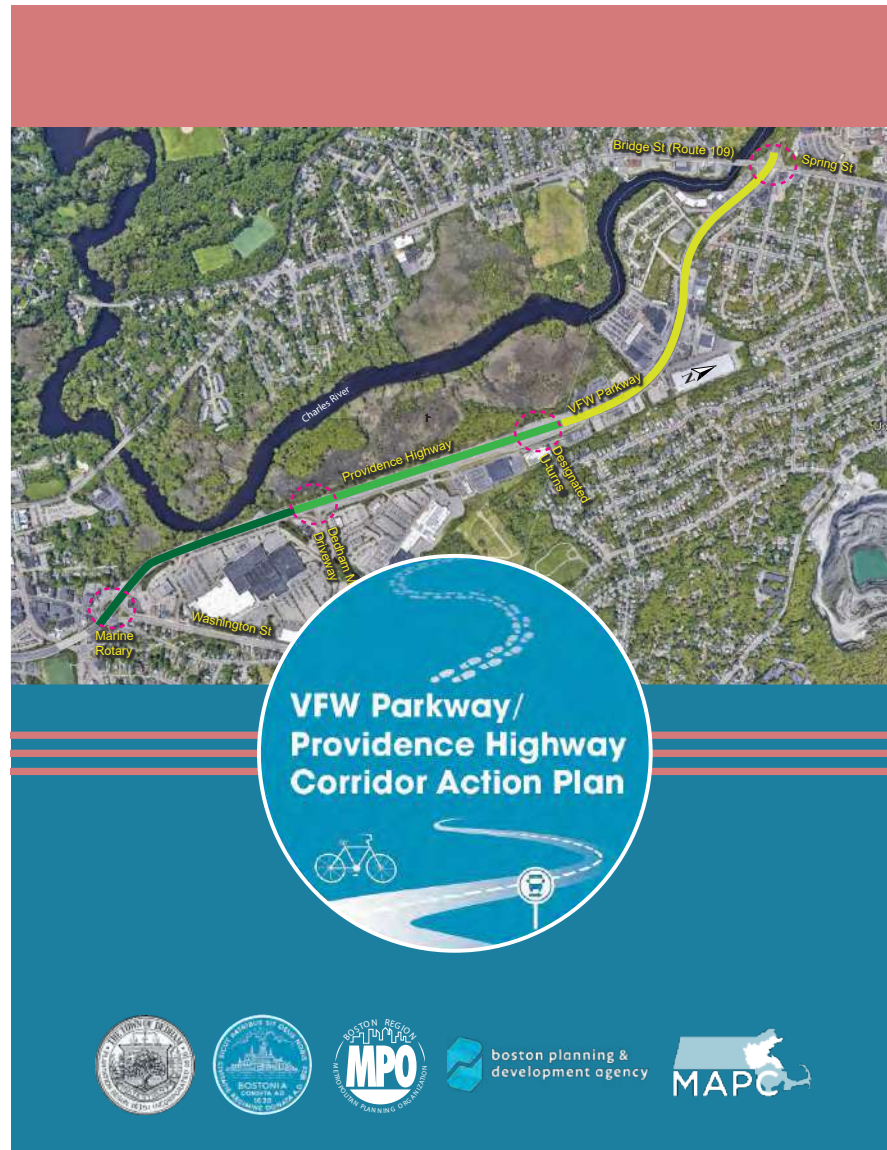


Overview:

An elevated boardwalk brings visitors back to the river’s edge from the Mother Brook Dam pedestrian bridge. A network of compacted stone dust walks follow the natural contours of the upland areas at 115 and 205 Providence Highway. These walks can be used for circuit training for walking or jogging. Raised boardwalk connections are made to the river’s edge, and to the future multi-use sidewalk at Providence Highway and across the Charles River to Corbett Avenue. A gravel parking lot is located within the 205 Providence Highway parcel along the existing roadway. The gravel parking lot will have paved spaces for ADA accessibility into the site. Elevated river overlook docks are located at upland areas providing scenic interest, creating opportunities to view the Charles River.

Figure 54: Preferred Concept Plan—“Riverside Boardwalk” Sheet 2

VFW Parkway/Providence Highway Corridor Action Plan



Designing Dedham



DRAFT FOR REVIEW

Town of Dedham Master Plan

Designing Dedham 2030

March 2022

Draft for Review





US Army Corps
of Engineers®
New England
District

Charles River Natural Valley Storage Area

Eastern Massachusetts

Draft Master Plan

March 2017



Charles River Natural Valley Storage Area Master Plan

INITIAL OBSERVATIONS





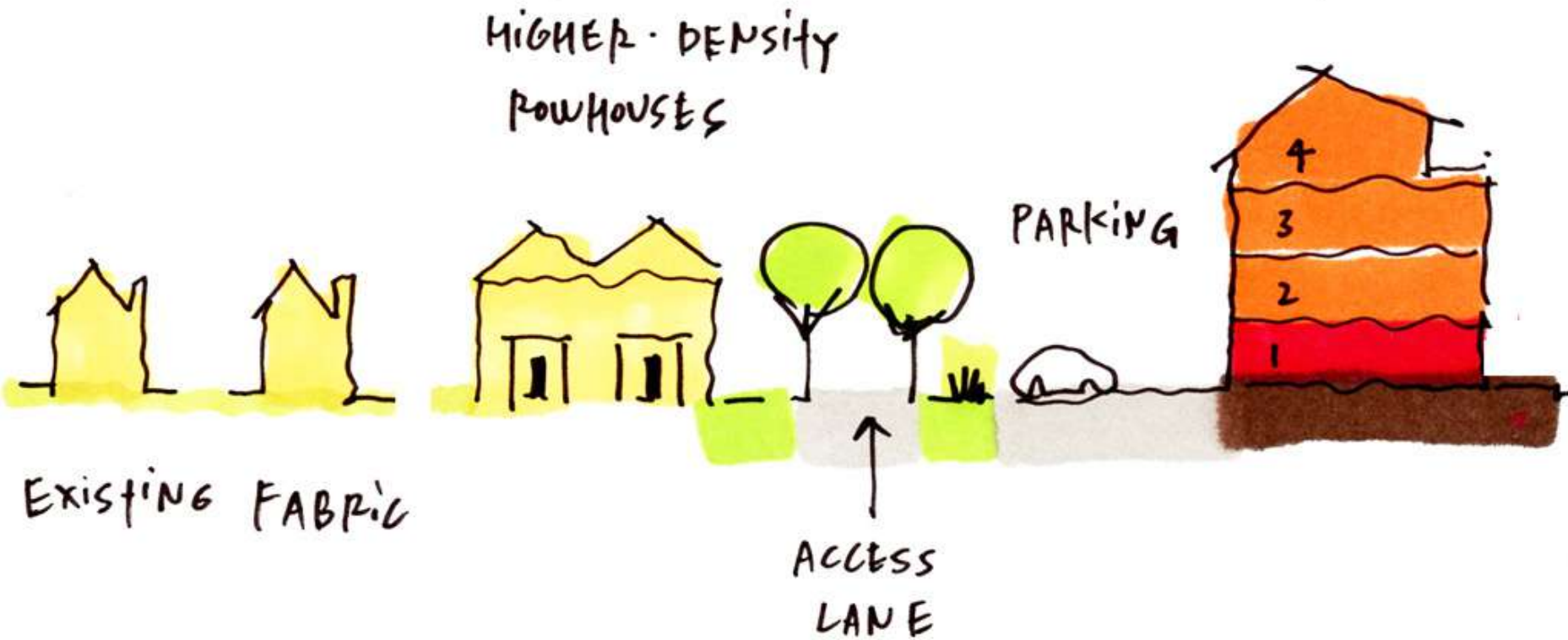
INITIAL OBSERVATIONS



INITIAL OBSERVATIONS

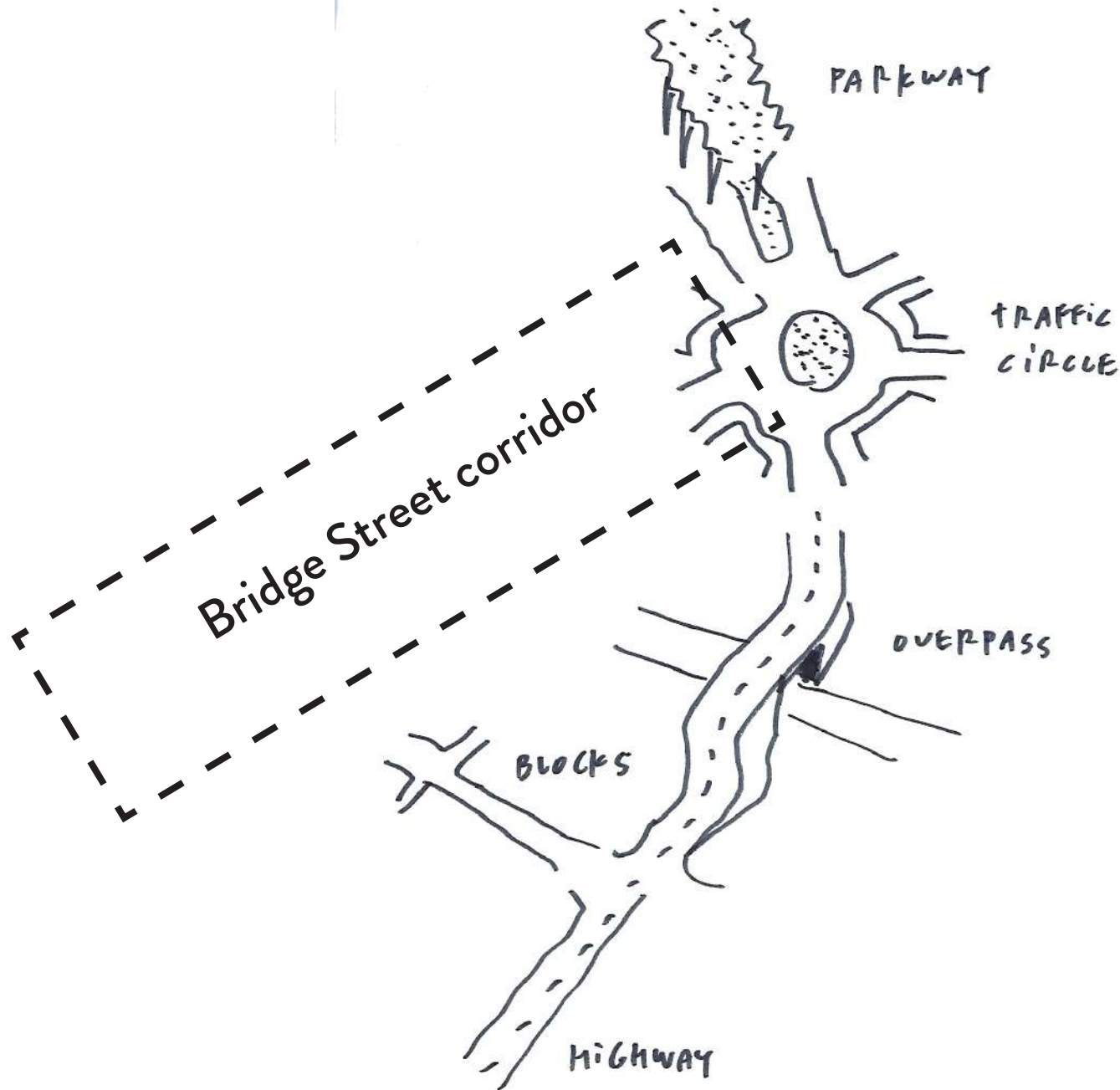


INITIAL OBSERVATIONS

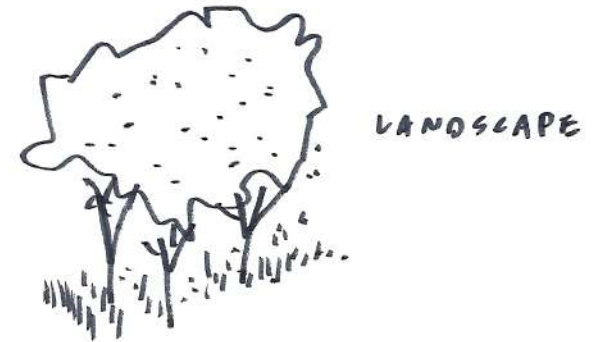
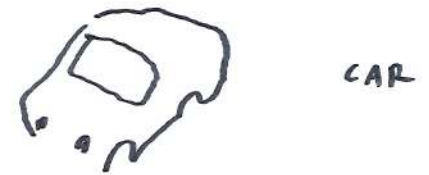
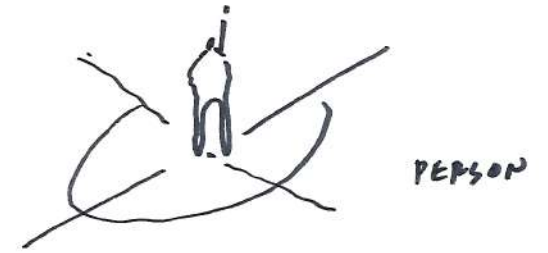


INITIAL OBSERVATIONS





GATEWAYS: infrastructure and resiliency



INITIAL OBSERVATIONS

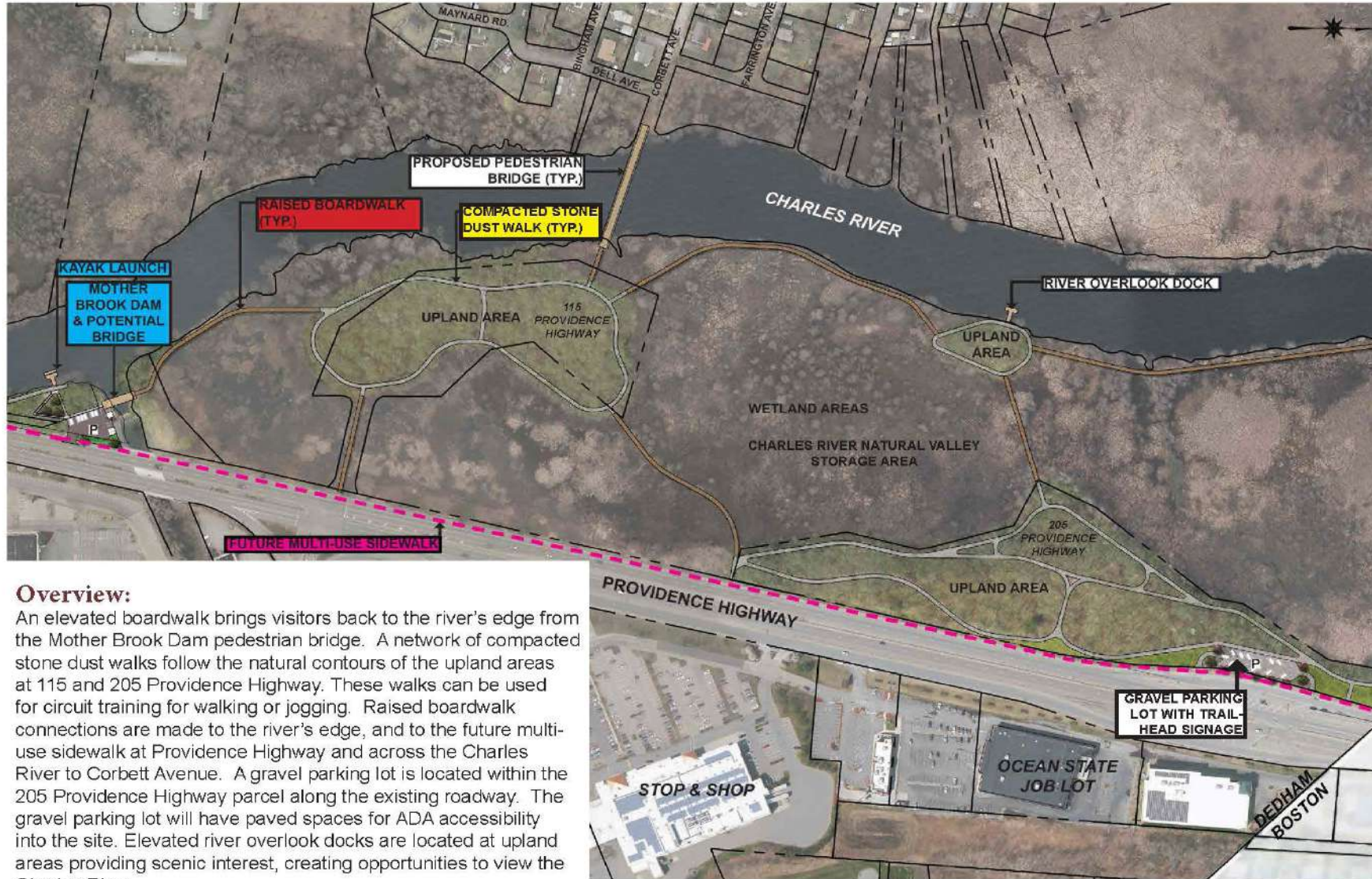




Think long term
Right-of-way

Refined Preferred Concept Plan—“Riverside Boardwalk”

Provide connections/
view corridors to adjacent
projects

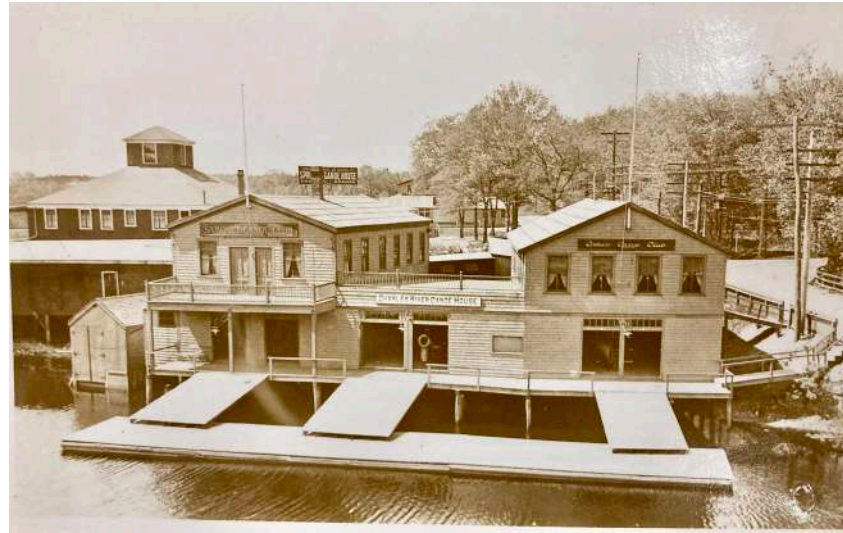


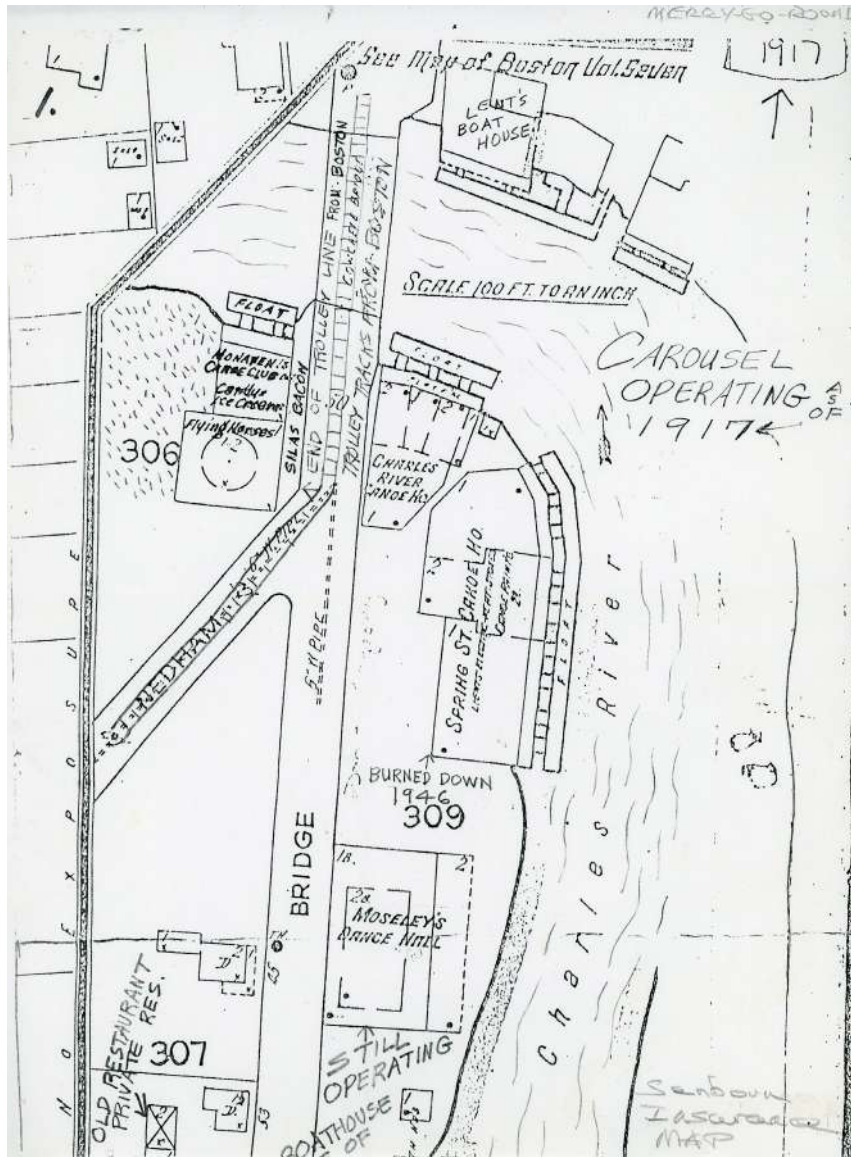
Overview:

An elevated boardwalk brings visitors back to the river’s edge from the Mother Brook Dam pedestrian bridge. A network of compacted stone dust walks follow the natural contours of the upland areas at 115 and 205 Providence Highway. These walks can be used for circuit training for walking or jogging. Raised boardwalk connections are made to the river’s edge, and to the future multi-use sidewalk at Providence Highway and across the Charles River to Corbett Avenue. A gravel parking lot is located within the 205 Providence Highway parcel along the existing roadway. The gravel parking lot will have paved spaces for ADA accessibility into the site. Elevated river overlook docks are located at upland areas providing scenic interest, creating opportunities to view the Charles River.

Figure 54: Preferred Concept Plan—“Riverside Boardwalk” Sheet 2

Importance of water in Riverside history



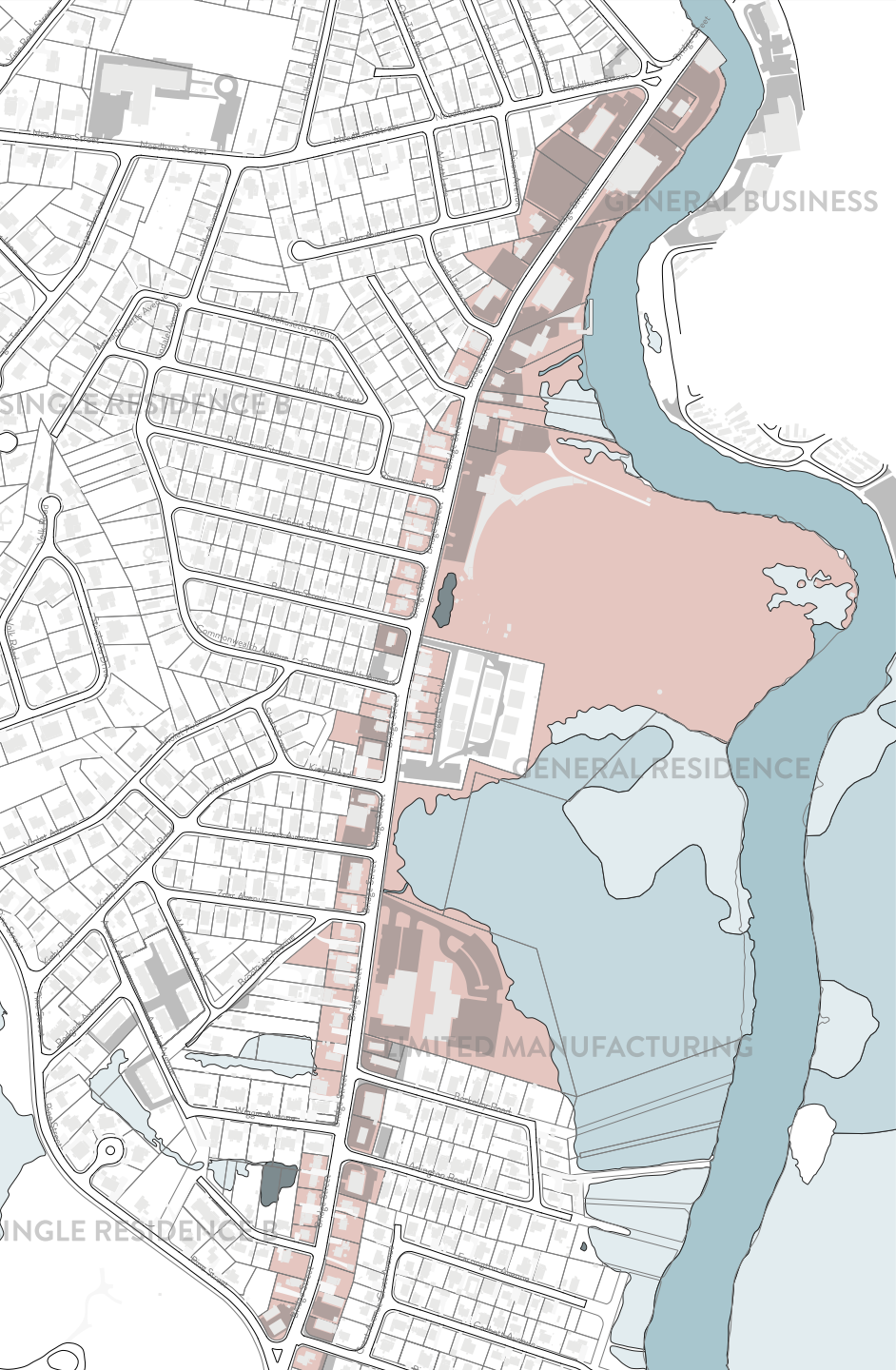


Community water-related uses spilled into the river



Wetlands are opportunity for amenities/conservation





Large percentage of impervious surfaces



BRIDGE ST CORRIDOR PLAN

Dedham, MA



architecture
urban design

GAMBLE
ASSOCIATES

December 2022