

Town of Dedham
RFQ # 23CON003

Peer Review Consultant
Services for Dedham
Conservation
Department

Technical
Proposal and
Statement of
Qualifications

Submitted October 31, 2022
by



Mother Brook Dam | Dedham, MA
Design/Env. Services by Pare for MADCR



Engineers | Scientists | Planners

PARECORP.COM



October 31, 2022

Town of Dedham
Procurement Department
Attn: Rana Mana-Doerfer
450 Washington Street
Dedham, MA 02026

Re: **Request for Qualifications**
On-Call Peer Review Services for Dedham Conservation Department
Town of Dedham, Massachusetts
(Pare Proposal No. CQ479.21)

Dear Ms. Mana-Doerfer and Members of the Selection Committee:

Pare Corporation is pleased to provide our Qualifications/Proposal to provide engineering reviews and services for the Town of Dedham. Our firm possesses **over 50 years** of experience providing municipalities with comprehensive engineering services ranging from planning, design, and construction administration, to review and support services for municipal departments and agencies to ensure compliance with town laws and specifications. In addition, we have a long history of providing on-call development plan review services and subdivision construction inspections to many communities in Massachusetts and Rhode Island.

Our engineers and Environmental Scientists have performed wetland, environmental, and geotechnical services in the Town of Dedham, including ongoing environmental monitoring at the Mother Brook Dam for the MADCR. Our staff has a thorough understanding of the regulations and permitting requirements of the Commonwealth of Massachusetts, the Massachusetts Department of Environmental Protection Stormwater Management Policy, and all other pertinent local, state and federal regulations. We are also a **local firm** with a full-service office in Foxborough. With over 115 professionals on our technical staff, including our dedicated group of Environmental Scientists, we are well-equipped to handle multiple tasks at the same time.

The Project Manager to be assigned to this contract is **Paul E. Orr**, who has over 30 years of experience in environmentally-related projects and will serve as the day-to-day contact with the Town and the Conservation Department. He will be responsible for overseeing the performance of the contract and ensuring that adequate resources are provided. The size and experience of our staff provides assurance that we can always have someone available to address any review issue. Our team will be responsive to meet your needs for any requests.

We welcome the opportunity to develop our relationship with the Town of Dedham and look forward to discussing the attached proposal. If you have any questions or need additional information, please feel free to contact me at 508-543-1755, or at mrongione@parecorp.com.

Sincerely,

Michael J. Rongione, P.E.
Senior Vice President



10 LINCOLN ROAD, SUITE 210
FOXBORO, MA 02035
508.543.1755

8 BLACKSTONE VALLEY PLACE
LINCOLN, RI 02865
401.334.4100

14 BOBALA ROAD, SUITE 2B
HOLYOKE, MA 01040
413.507.3448

RFQ # 23CON003
Town of Dedham, Massachusetts
Procurement Department on behalf of the Conservation Department

COVER SHEET

The Town of Dedham reserves the right to reject any or all Proposals, to and waive any informalities, or to accept the Proposal deemed in the best interest of the Town. One Original, five (5) copies, and one (1) digital copy of the proposal must be submitted On or before Monday October 31, 2022, at 12:00 PM

to:

Rana Mana-Doerfer, Director of Procurement
Procurement Department
Town Hall
450 Washington St
Dedham, MA 02026

The envelope containing the Bid and required information must be sealed and marked with Proposer's name, title of proposal, RFQ number, and date of opening. The Proposer must sign all required signature pages in order for the proposal to be considered.

The Proposer acknowledges receipt of the following ADDENDA # 1

BUSINESS/INDIVIDUAL NAME Pare Corporation

ADDRESS 10 Lincoln Road, Ste 210

CITY, STATE, ZIP CODE Foxborough, MA 02035

TELEPHONE 508-543-1755

EMAIL mrongione@parecorp.com

INDIVIDUAL/AUTHORIZED SIGNATURE 

AUTHORIZED OFFICER NAME (print) Michael J. Rongione

DATE October 31, 2022

By signing above, the authorized officer is certifying that a complete examination of all bid/RFQ documents has been made and that the goods/services will be delivered within the time specified and at the prices stated.

RFQ # 23CON003 On-Call Peer Review Consultant Services for Dedham Conservation Department

Table of Contents

Section 1: Statement of Qualifications / Plan of Services

Section 2: Firm Qualifications & Experience

Section 3: Personnel Qualifications

- Organizational Chart
- Resumes

Section 4: References

Appendix: Required Forms



Town of Dedham
RFQ # 23CON003

Peer Review Consultant
Services for Dedham
Conservation
Department

Section 1

**Statement of
Qualifications /
Plan of Services**



STATEMENT OF QUALIFICATIONS

With over 50 years of New England project experience, four major divisions (Transportation, Environmental, Civil/Structural, and Geotechnical), and several specialty design groups within our ranks, Pare provides confidence to our clients that we can handle any design, review, and construction challenges that might arise. Included below is a summary of qualifications demonstrating how Pare meets both the minimum requirements and the highly advantageous evaluation criteria established by the Town of Dedham.

MINIMUM SUBMISSION REQUIREMENTS

1. **Project Supervisor must be a Massachusetts Registered Professional Consultant (PE), or Professional Land Surveyor (PLS), or Professional Wetland Scientist (PWS) licensed AND EXPERIENCED in the appropriate discipline.**

Our Project Team contains a number of Massachusetts registered Professional Engineers, led by our Principal-in-Charge, **Michael J. Rongione, P.E.** (Mass PE #41434), and supported by our Project Supervisor, Professional Wetland Scientist **Lauren H. Gluck, PWS** (PWS #2496).

2. **Project Manager must be experienced in all aspects of the appropriate consulting discipline.**

Pare's Project Manager, **Paul E. Orr**, has over 30 years of experience working in environmentally related projects, particularly in the development and review of permit programs, as well as wetlands and waterways permits for a variety of infrastructure and construction projects. The rest of our key personnel team has worked in their respective fields for at least 5 years, and many for over 15 years.

COMPARATIVE EVALUATION CRITERIA

1. **References: All responses from 5-year client list give a favorable response.**

Pare is proud of our long-standing relationships with several local municipalities that serve as a testament to our commitment to provide consistent, quality services. Municipal client references are provided in *Section 4: References*.

2. **Personnel Municipal Experience: Individual staff members have professional experience in the appropriate discipline and have at least 5 years experience in municipal projects.**

The municipal experience of each member of our key project staff ranges from 5 years to over 30 years, in a variety of engineering and environmental disciplines. Resumes are enclosed in *Section 3: Personnel Qualifications*.

3. Firm Experience: Firm has had direct experience in more than five (5) other projects of similar size, type, and scope.

Pare has provided consulting services to several municipalities over the years. We have considerable experience in assisting Planning Boards, Conservation Commissions, and Boards of Health in the review of subdivisions and site plans to determine compliance with existing regulations and sound engineering practice. We have also assisted in the updating of regulations and design standards to reflect current criteria, attending commission meetings to present our findings and answer commission members' technical questions.

The following is a sampling of peer review contracts that Pare has completed in other Massachusetts and Rhode Island municipalities:

- | | |
|---|------------------|
| ▪ <i>Planning Board Engineering Review Services</i> | Sturbridge, MA |
| ▪ <i>Planning Board Consultation</i> | Amesbury, MA |
| ▪ <i>Planning Board Consultation</i> | Rehoboth, MA |
| ▪ <i>Planning Board Consultation</i> | Douglas, MA |
| ▪ <i>Planning Board Consultation</i> | Dartmouth, MA |
| ▪ <i>Planning Board Consultation</i> | Holliston, MA |
| ▪ <i>Planning Board Consultation</i> | Salisbury, MA |
| ▪ <i>Planning Board Consultation</i> | South Hadley, MA |
| ▪ <i>Planning Board Consultation</i> | Walpole, MA |
| ▪ <i>Planning Board Consultation – Traffic Study Review</i> | Mansfield, MA |
| ▪ <i>Engineering Consultation</i> | Middletown, RI |
| ▪ <i>Engineering Consultation</i> | Warren, RI |
| ▪ <i>Engineering Consultation</i> | Portsmouth, RI |

Details of Pare's experience are described further in *Section 2: Firm Qualifications & Experience*.

4. Personnel Experience: All members of the technical team have more than ten (10) years of relevant qualified work experience.

The key team members and project leaders assigned to this project have more than 10 years of experience in their respective disciplines, and will closely supervise other engineers scientists on the project team.

5. Overall quality: Consultant met all submittal requirements and clearly defines the roles and responsibilities of all personnel.

We are confident that the enclosed qualifications sufficiently address all requirements as outlined in the Town's Request for Qualifications, and demonstrate Pare's ability to meet the needs and goals of the Town. The *Plan of Services* following these pages outlines our technical understanding of the services to be provided, while the following sections contain the firm project experience and personnel resumes to demonstrate our ability to perform those services. An organizational chart defining all personnel roles is enclosed in *Section 3: Personnel Qualifications*.

PLAN OF SERVICES

PROJECT UNDERSTANDING

The primary purpose of this contract is to provide peer review consulting services to support the Town of Dedham/Dedham Conservation Commission with wetlands and stormwater management applications submitted to the Town, and to provide for conformity of the planned construction with the Town's requirements under the Massachusetts Wetlands Protection Act, (MGL C.131, s.40) and its implementing regulations at 310 CMR 10.00; the Town of Dedham Wetlands Bylaw (C.271) and its associated Conservation Commission Rules and Regulations; the Town of Dedham Stormwater Management Bylaw (C.246) and its associated Stormwater Management Rules and Regulations; the Town of Dedham Drainage and Stormwater Management Design Standards; and the Massachusetts Stormwater Handbook. Pare has a talented and qualified team of in-house professionals to address all of these areas.

*Pare will coordinate with Town Staff concerning the review process and to discuss project-related issues, including schedule. **Pare anticipates completing reviews within two weeks or less from Notice to Proceed**; providing the Board or Commission with a report one week in advance of the hearing. This duration may be adjusted if the Conservation Commission (or other Town Department as warranted) requires a faster review period. Review comments will be submitted to the Town in a timely manner prior to Town meetings. Pare staff are available to discuss our reviews at Town meetings as requested.*

As an engineering company with environmental science and planning professionals, traffic and transportation engineers, water and wastewater engineers, stormwater engineers, land development engineers, and geotechnical engineers, Pare has the ability to provide experts not only for review of wetlands and stormwater management review, but other land use planning and development as may be needed to assist the Town boards and departments. Review and comments for site environmental investigations completed in relation to certain development proposals may also be required. Our staff most familiar with planning and zoning reviews will take the lead on this project and other staff experts will be called upon for opinions on any complicated issues.

In addition, Pare has experienced in-house construction staff that, along with our engineering staff, can provide the necessary services to ensure that construction work is completed in conformance with all approved plans and contract documents.

PROJECT APPROACH

Pare is committed to providing highly responsive peer reviews and civil engineering and construction support services to the Town of Dedham/Dedham Conservation Commission for this on-call contract. Our Massachusetts office is located less than half an hour from Dedham, and we possess the experience and resources to excel in meeting your needs. **Pare does not anticipate utilizing any subconsultants for this contract.**

Pare has developed a basic procedure for review of submissions. We will work with the Conservation Commission to refine this procedure and provide the level of service that meets your needs.

Upon notice to proceed and receipt of submitted plans for any specific proposed development, Pare typically provides an independent review of the document submittals made on behalf of development applicants. Appropriate Pare team members will attend required Conservation Commission hearings or, if necessary, Select Board meetings, Planning Board, Zoning Board of Appeals, etc., to present our findings concerning our reviews.

Basic Services

1. *Project Coordination*

A coordination meeting will be held with the Town Staff and, if deemed necessary, the applicant, to discuss the proposed project. This meeting will provide an opportunity for the Town and the applicant to indicate any issues that are of concern.

Pare will provide monthly status reports that will include updates concerning work accomplished during the reporting period, items to be resolved, present stage of the project, and the next scheduled submission date.

BASIC SERVICES OVERVIEW

1. Project Coordination
2. Field Verification
3. Submission Reviews
4. Analysis Letter Report Preparation
5. Attendance at Town Meetings
6. Review of Revised Submissions
7. Construction Inspection
8. Technology

2. *Field Verification*

A site visit will be conducted for the project site. This visit will include verification of data provided for review. Data to be verified includes the physical characteristics of the site, the ecological characteristics of the site, and the description of the scenic and historic nature of the site.

A site visit could be conducted with Town staff or Board members if this is desired. This may provide interested parties a chance to bring their concerns to Pare's attention.

3. *Submission Reviews*

- a. Pare will review the plans and supporting documentation including the project narrative accompanying the submissions. Pare will prepare a letter report documenting any issues identified during the review. Field measured data will be verified when possible during

- the field verification portion of the project.
- b.* Pare will review all calculations provided with the submissions. It is anticipated that these primarily include stormwater calculations; however if requested additional review of water flow calculations, traffic data, wastewater flow calculations, and/or development impacts can be provided. Pare will provide comments concerning accuracy and adequacy of the calculations provided.
 - c.* If directed, Pare will perform supplemental studies on the Town's behalf. Such studies could include wetlands delineations, stormwater management plans, traffic capacity analyses, drainage studies, sewer flow studies, and hydraulic modeling. Pare's environmental scientists can review and comment on site environmental investigations completed in relation to certain development proposals. The Pare team has the latest software to complete these studies and has the experienced staff to successfully complete these studies.

4. Analysis Letter Report Preparation

Based on the field verification and our review findings, a letter report documenting all comments will be submitted to the Conservation Commission at least one week prior to the appropriate public hearing.

Pare is available to meet with Town staff, or the Applicant if directed, prior to any Town meeting to discuss the findings if requested.

5. Attendance at Town Meetings

Pare will attend Conservation Commission meetings as necessary to present our findings and to discuss any issues and/or concerns. As part of our presentation, visual materials may be developed for aid in our discussions.

6. Review of Revised Submissions

The level of effort required for this task can vary greatly depending on the level of detail and accuracy provided in the initial submissions. Pare will coordinate with the Town concerning the level of effort required for this task. Any additional reviews necessary for resubmissions will be performed as an additional service.

7. Construction Inspections (as may be required by the Conservation Commission)

Pare's experienced staff is available to continue its involvement in the permit review process during the construction phase of the project. These services may include:

- a.* Our staff will review the shop drawings approved by the project design engineer for general compliance with the Town of Dedham approved design drawings and technical specifications.
- b.* Pare staff will also perform routine and scheduled inspections to ensure that the construction of the infrastructure is in accordance with the approved plans and the

- Town's various regulations related to the Order of Conditions issued by the Dedham Conservation Commission as authorized and required. Pare will also review the results of any tests that are to be performed (i.e. compaction tests, slump tests, etc.). These reviews will be performed to ensure compliance with the approved plans and decisions, as well as all applicable local, state and federal laws, rules and regulations. Any changes that may be necessary during the construction will be coordinated with the contractor and the Town before any deviations from the approved documents are implemented.
- c.* Pare's staff will monitor the contractors progress and bring to the attention of the Town any tasks that may impact the schedule.
 - d.* All field visits will be documented in field reports for distribution to all parties to help with the progress of the project. The reports will include a summary of field crews and equipment on-site, work accomplished, and items that need to be resolved. Notes regarding progress of work versus construction schedule will be documented. These reports will be compiled and submitted on a weekly basis. If there is an item that needs action, all parties will be notified immediately.
 - e.* Pare will also prepare an engineer's opinion of probable construction values for the remaining site work as it progresses. Recommendations for release of performance bonds and security agreements will be reviewed and a summary letter will be provided to the Town for review.
 - f.* Upon completion of the contract, Pare will coordinate a final walk through of the project and develop a punch list of items that need resolution.
 - g.* Our construction staff and lead engineer will maintain all records including field reports, correspondence, contract documents, field notes, log books, construction change orders, meeting minutes, shop drawings, product data, samples, and supplementary drawings in an orderly manner. At project close out, Pare will provide the necessary documents to the Town for their files.

8. Technology

As a full service engineering consulting firm, we are continually evaluating and investing in technology to provide our clients and staff with the latest tools to efficiently and effectively deliver our services. These include:

- a.* AutoCAD – Pare maintains program licenses and trained staff of AutoCAD drafting, Civil 3D, and Revit.
- b.* Hydrology & Hydraulics Modelling – Our in-house library includes NRCS TR-20 and TR-55 based stormwater modelling programs in addition to:
 - HydroCAD
 - HEC-RAS
 - HEC-HMS

With a trained staff we are familiar and experienced with the industry standard modelling

- software, interpretation of input/output results, and reporting documentation.
- c.* GIS – Pare maintains program licenses and trained staff for ESRI ArcGIS information system applications to assist in developing interactive mapping, spatial data analysis, mapping, and desktop site data collection and review to expedite reviews.
 - d.* BlueBeam – a PDF markup and collaboration software tool widely used by industry professionals that expedites review and document comment tracking.
 - e.* Collaboration – Our staff has multiple platforms available for virtual “on-the-fly” collaboration including MS-Teams and RingCentral. They are also familiar with and regularly converse on industry standard platforms including Webex, Zoom, Skype, and GoTo Meeting.
 - f.* Drone Services – Pare owns and is fully licensed to operate an unmanned aerial vehicle (drone) for aerial photos and documentation.

Town of Dedham
RFQ # 23CON003

Peer Review Consultant
Services for Dedham
Conservation
Department

Section 2

**Firm Qualifications &
Experience**





Engineers | Scientists | Planners



PLANNING AND SITE / CIVIL
Feasibility Studies and Master Planning
Land Development and Site Design
Sustainable Design / LEED Assistance
Municipal Planning Services
Park and Recreation Planning
Sustainable Energy Development
Grading / Drainage / Utility Layout



STRUCTURAL
Building Design and Rehabilitation
Condition Surveys / Inspection
Parking Decks, Specialty Structures
Foundation Design, Historic Structures
Demolition Plans
Pre- and Post-Construction Inspections



ENVIRONMENTAL
Water Supply / Wastewater
Stormwater BMPs
Environmental Site Assessments
Site Remediation, Hazardous Waste
Hydrology and Hydraulics
Solid Waste / Resource Recovery



GEOTECHNICAL / DAM
Subsurface Investigations
Foundations and Retaining Walls
Slope Stability and Ground Stabilization
Dam Inspections, Design,
Rehabilitation, and Removal
Emergency Action Plans / O&M Manuals



TRANSPORTATION
Multimodal Transportation Planning
Highways and Roadways
Bridge Design & Inspections
Parking / Traffic Studies and ITS
Bicycle and Multi-Use Facilities
Streetscape Design
Railroads and Airports



WATERFRONT / MARINE
Piers / Docks / Wharves
Seawalls / Bulkheads
Ferry Docks & Terminals
Structural Analyses & Underwater
Inspections
Port Planning / Marinas
Dredging / Coastal Studies



PERMITTING & SUPPORT SERVICES
Coastal & Inland Wetlands
Delineations / Mitigation / Restoration
Water / Groundwater
Regulatory Agency Coordination
LSP Services / CAD
Geographic Information Systems (GIS)
Construction-Phase Services



Pare Corporation was founded in 1970 with one goal in mind — providing consistently superior service to our clients. Over the years, we have expanded both our capabilities and our staff to address the ever-changing complexities and challenges of projects in both the public and private sectors.

Today, we provide a diverse array of in-house services. By combining the resources of our experienced professional staff, and staying at the forefront of emerging technologies, we maintain a track record of solid accomplishment and are able to handle projects of any size with efficient, responsive service.

As a multidisciplinary firm of engineers, planners, environmental and wetland scientists, GIS specialists, and regulatory permitting specialists, our clients depend on us to help them work through the anxieties of the design and permitting process while sharing their sense of urgency.

Pare at a Glance

- 52 Years in Business
- 125+ Employees
- 45 Professional Engineers (Licenses in RI, MA, CT, ME, NH, VT, NY, AL, CO, DE, FL, GA, IA, MD, MI, MN, NC, NE, NJ, NV, OH, PA, SC, TX, UT, VA, WI, WV, and US Virgin Islands)
- USGBC LEED-Accredited Professionals
- ISI Envision Sustainability Professionals
- Licensed Site Professionals (LSP)
- Professional Geologists
- Professional Wetland Scientists
- Resident Construction Observers

Primary Markets

- *State, Municipal, and Site Infrastructure — Transportation, Water, Wastewater, Solid Waste*
- *K-12 and Higher Education*
- *Pharmaceutical and Biotechnology*
- *Dam Owners and Marine Facilities*
- *Industrial, Corporate, Institutional, and Commercial*

Foxboro, MA
(508) 543-1755

Holyoke, MA
(413) 507-3448

Lincoln, RI
(401) 334-4100

parecorp.com

Pare was retained by the Town of Sudbury to provide Environmental Compliance Monitoring and Construction Observation for the installation by Eversource of a new, 4.3 mile long subterranean 115kV underground electrical transmission line, and the construction of a portion of the Massachusetts Central Rail Trail (MCRT) from the existing Sudbury Substation to the Hudson town line.

The project borders and is within the buffer zones of numerous wetlands, vernal pools, streams, brooks, and other environmentally sensitive areas. Eversource will be required to install numerous erosion controls, schedule work around various time of year restrictions, excavate and stockpile earthen materials, dewater work areas, excavate around numerous culvert crossings, and abide by the Order of Conditions (DEP File No, 301-1287) and Storm Water Pollution Prevention Plan. The Order of Conditions specifies that the Conservation Commission will hire an Independent Environmental Monitor to oversee specific construction activities and provide environmental compliance monitoring for Phase I of the project (Eversource Underground Transmission Line).

As the Independent Environmental Monitor, Pare is responsible for review of the erosion control barriers following installation but prior to any land disturbance; review of the erosion control barriers each year prior to vernal pool species

migration; conducting spot inspections of vernal pools during construction and/or reviewing reports provided by Eversource's environmental monitor; and reporting negative impacts to vernal pools during construction to the Sudbury Conservation Commission.

Pare will also observe initial tree removal and invasive species clearing activities within the limit of work, observe bridge platform installation, and provide periodic spot inspections during bridge construction, as well as providing structural review for compliance of installation of the working platform.

Pare will be on-site to observe dewatering in sensitive locations such as whenever excavation is proposed within 50 feet of a wetland, or when extensive dewatering will be needed.

Pare will also review restoration/mitigation areas; provide observation during excavation for and installation of the wetland replication area; and will observe excavation/construction activities over culverts and drainage structures.

MCRT Environmental Compliance Monitoring/ Construction Observation Sudbury, Massachusetts

**Project Owner: Town of Sudbury,
MA**

Relevant Project Features:

- *Environmental oversight.*
- *Stormwater management assessment.*
- *Time of year restriction compliance.*
- *Erosion control monitoring.*
- *Emergency situation response*
- *LSP Services Contingency.*



Copicut Reservoir Dam Wetland Restoration

Fall River, Massachusetts

Project Owner: City of Fall River

The Copicut Reservoir Dam was constructed in the 1970s to create the Copicut Reservoir, a potable water supply source for the City of Fall River. In 2008, Pare Corporation was retained by the City to design repairs and improvements to ensure proper access to the dam, much of which passed through wetlands, for the long-term maintenance of the structure.

Pare completed a detailed seepage and stability analysis of the embankment and developed designs for the installation of a prefabricated access bridge, clearing of the 3,400-foot-long, 39.5-foot-high embankment, and installation of a reinforced access roadway through the wetland along the downstream toe of the dam.

In support of the design, Pare performed wetland and river delineations in accordance with State and federal criteria. Pare documented the delineations with specific

emphasis on the more than ½ acre that would be filled for the project and performed a functional assessment in accordance with the US Army Corps of Engineers methodology.

To mitigate for the unavoidable impacts to wetlands, Pare designed an approximately 1-acre wetland restoration area that incorporated native Atlantic White Cedar saplings and course woody debris and boulders to serve as habitat features. The restoration area was sited in a location that was previously disturbed by fill placement when the dam was originally constructed. Pare successfully permitted the repairs and wetland restoration by obtaining a MEPA Certificate; Orders of Conditions from the Fall River and Dartmouth Conservation Commissions; a No-Take Determination from the Massachusetts NHESP; a MassDEP Water Quality Certification; and USACOE authorization

under the General Permits for Massachusetts as a Pre-Construction Notification activity. Pare provided oversight during the construction of the restoration area and is currently providing the required post-construction monitoring and reporting in accordance with the project approvals.

Relevant Project Features:

- *Dam Inspection*
- *Toe Drain Evaluation*
- *Toe Drain Design*
- *Wetland Restoration Design*
- *Wetland Delineations and Evaluations*
- *Environmental Permitting*
- *Construction-phase Services*
- *Post-Construction Monitoring*



New England Revolution Training Facility

**Foxborough,
Massachusetts**

Project Owner: The Kraft Group

Pare Corporation provided wetlands consulting, hydrologic and hydraulic analysis, and environmental permitting services for the New England Revolution training facility at 1776 Revolution Way in Foxborough, MA. The new \$35-million complex spans 68 acres to the rear of Gillette Stadium and Patriot Place, on a site constrained by extensive wetlands. The facility includes three new grass fields, including one equipped with heating technology, a state-of-the-art fitness center, a team lounge and dining room, a cardio training hill, a locker room, and a hydrotherapy room.

The design of the site was constrained by a variety of natural resources and conditions including bordering and isolated wetlands, intermittent and perennial streams, numerous potential vernal pools, and irregular topography from former gravel mining operations on the site.

Pare completed site-wide wetland delineations and verified the wetland boundaries through an Abbreviated Notice of Resource Area Delineation to the local

Conservation Commission and a federal Jurisdictional Determination through the U.S. Army Corps of Engineers (USACE). Pare completed a Potential Vernal Pool evaluation to study the wildlife habitat functions of ten isolated depressions and a Riverfront Area analysis to determine the extents of degraded 200' Riverfront Area.

Pare prepared environmental permit applications for the property and obtained the required permits and authorizations including an Order of Conditions from the local Conservation Commission and a General Permit Authorization from USACE.

Pare prepared a Hydrologic and Hydraulic Study for an unnamed intermittent stream crossing the property to determine the accurate extent of flooding during the 100-year storm and provide accurate inundation limits.

Pare worked closely with the landscape architect, Activitas, and the design team to consult on the wetland impacts of the project and

Relevant Project Features:

- *Wetland delineation.*
- *Wildlife habitat evaluation.*
- *Local, state, and federal permitting.*
- *Design support and construction observation of wetland impact mitigation.*
- *Hydrologic and hydraulic analysis.*

provide design support for extensive impact mitigation. The mitigation included restoration of approximately 79,258 SF of Riverfront Area through invasive species management and native plantings; intermittent stream corridor restoration to improve continuity along 206 LF of stream channel; restoration of 12,032 SF of previously filled wetlands; and construction of compensatory flood storage. Pare wetland scientists provided onsite construction observation during the excavation and plantings of the mitigation projects.

Southborough MS4 Compliance

Southborough, Massachusetts

Project Owner: Town of Southborough



In compliance with the provisions of the EPA Clean Water Act and the Massachusetts Clean Waters Act, small municipal separate storm sewer system (MS4) discharges must comply with the conditions of the 2016 MA MS4 General Permit. The Town of Southborough is regulated as a traditional MS4 under the NPDES program and is required to comply with all permitting regulations.

Pare Corporation was hired by the Town to administer the requirements of the permit, including the preparation and submission of the following documents on behalf of the Town to meet the Year 1 Requirements:

- Notice of Intent (NOI)
- Stormwater Management Program (SWMP) (Supplement to 2003)
- Municipal Stormwater Infrastructure Operation and Maintenance Plan
- Illicit Discharge and Detection (IDDE) Plan

As part of the Year 2 conditions, Pare has prepared the Town's Stormwater Pollution Prevention Plan, reviewed and proposed revisions to the Town Ordinances, and created and refined the Town's Phase I Mapping in GIS.

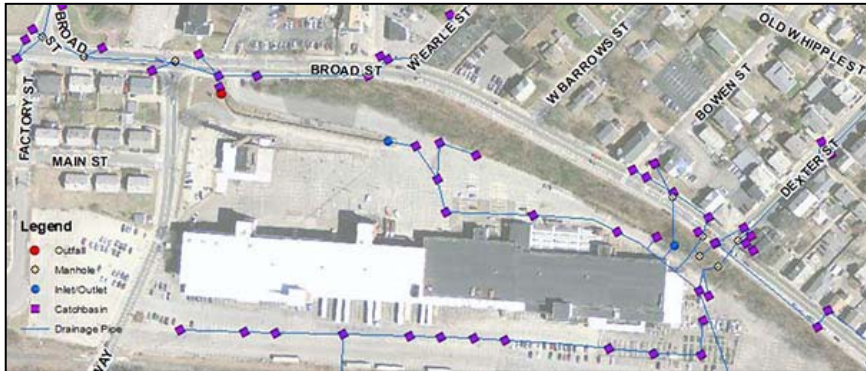
The mapping included all catch basins, manholes, detention basins, drainage conveyance systems, and outfalls within the Town. Initial catchments were delineated for each system, and priority outfalls were identified based on dry weather outfall screening conducted in accordance with the prepared catchment investigation procedure.

Dry Weather Outfall and Interconnection Screening and Sampling was conducted for High and Low Priority Outfalls in accordance with their initial ranking and the procedures outlined within the prepared IDDE Plan.

Relevant Project Features:

- *GIS inventory.*
- *Project coordination.*
- *GPS location of outfalls and outfall condition reporting.*
- *Dry weather outfall sampling and analysis*
- *GIS mapping to update Town plan.*
- *Updated SWMP.*
- *Created IDDE Plan.*
- *Prepared and submitted the MS4 annual reports.*





Cumberland MS4 Compliance

Cumberland, Rhode Island

Project Owner: Town of Cumberland

Relevant Project Features:

- *GIS inventory.*
- *Project coordination.*
- *Data collection to locate outfalls.*
- *Dry weather sampling and testing.*
- *GIS mapping to update Town plan.*
- *Updated SWMPP.*
- *Updated IDDE Plan.*
- *Prepared and submitted the MS4 annual reports.*

In the State of Rhode Island, the RI Department of Environmental Management (RIDEM) implements the US Environmental Protection Agency (EPA) National Pollutant Discharge Elimination System (NPDES) program. The Rhode Island Pollutant Discharge Elimination System (RIPDES) regulations were amended to include EPA's NPDES Phase II requirements. Phase II requires stormwater discharges to waters of the State from small municipal separate storm sewer systems (MS4s) located within urbanized areas or designated by the permitting authority to obtain a RIPDES stormwater permit. The Town of Cumberland is regulated as a small MS4 under the RIPDES program and is required to comply with permitting regulations. Through a recent consent decree from the EPA, the Town was required to be in compliance with the RIPDES General Permit for the US EPA Clean Water Act Municipal Separate Storm Sewer Systems (MS4) program.

Pare Corporation was hired by the Town to develop and implement a Storm Water Management Program Plan (SWMPP) required as part of the RIPDES General Permit for

small MS4s. The plan addressed the six minimum control measures outlined in the permit. One of these control measures pertains to illicit discharge detection and elimination. As a condition of the permit, the Town needed to develop and implement a plan to detect and address non-stormwater discharges (including illegal dumping) into the system. As required by the RIPDES General Permit, and by the Consent Agreement between the Town and RIDEM, this Illicit Discharge Detection and Elimination (IDDE) Plan addressed the following:

- Procedures to identify and remedy priority areas of illicit discharge investigation;
- Standard Operating Procedures (SOPs) to trace and eliminate illicit discharges;
- SOPs to complete required dry weather surveys of MS4 Outfalls;
- IDDE responsibilities of town staff.

As part of the compliance, Pare also compiled a GIS map of all outfalls, receiving waters, drainage systems, and the contributing areas to the MS4 outfalls. Pare also performed the inventory and the necessary sampling needed to comply with the Permit.



Locating outfalls for GIS mapping.

Pare Corporation has provided engineering services to the Town of Sturbridge's Planning Board and Conservation Commission for several years. These review services have addressed site layout, water and wastewater requirements, stormwater management/drainage calculations, utility connections, parking requirements, fire supply needs, traffic, wetlands delineation and mitigation, erosion and sedimentation control, structural design of retaining walls, and compliance with municipal regulations. The projects include:

New England Cold Storage: Pare reviewed the design of a new 120,549-square-foot cold storage facility on Route 20 which is meant to operate in the food supply chain. Pare reviewed the site layout and parking and the traffic study related to the project for the Planning Board.

Caregiver Patients Connection (Local Roots NE): Pare reviewed a Special Permit and Site Plan Approval application for the construction of a building and related site improvements for an Adult Use Marijuana Facility and Gym/Retail Space to be located at 365 Main Street. The review included plan review, stormwater design and calculations, traffic impact and access study, and the MassDOT Application for Permit to Access State Highway.

Heal Sturbridge: Pare reviewed a Special Permit and Site Plan Approval application which would allow the operation of an Adult Use Marijuana Facility to be located

within the existing building (currently approved as a Medical Marijuana Facility) at 660 Main Street. Review services performed to assist the Planning Board included the review of the applicant's traffic impact assessment.

Pilot Travel Center: Pare reviewed the Site Plan Approval application and Notice of Intent Application for the Planning Board and Conservation Commission for the Pilot Travel Center which is an existing travel center consisting of three buildings and two fuel canopies. It is proposed to raze and rebuild the entire facility so the final site will have one travel center building with two fuel canopies. The review included: Site Plans, the Project Narrative, the Stormwater Management Report, the Sturbridge Conservation Commission Affidavit, the Notification to Abutters, the Notice of Intent, the Wetland Buffer Plans, the Wetland Resource Evaluation and the Traffic Study.

All of these reviews included coordination with Town staff and testimony with the Planning Board and the Conservation Commission.

Town of Sturbridge Planning Board Engineering Review Services

Sturbridge, Massachusetts

Relevant Project Features:

- *Review of conceptual, preliminary, and final site design plans.*
- *Review of traffic impact analyses.*
- *Review of stormwater management plans and drainage design.*
- *Attendance at Conservation Commission and Planning Board meetings.*





Town of Bristol Engineering and Review Services

Bristol, Rhode Island

Pare Corporation has provided engineering services to the Town of Bristol for over 30 years. Projects have included the design of a wastewater treatment facility; sewer investigations and design; landfill design, consultation, and monitoring; and a downtown parking study. Based on this experience and on the firm's extensive in-house capabilities, the Bristol Planning Board retained Pare to provide on-call consulting services beginning in 1998.

To date Pare has completed over 90 reviews for the Town including reviews of conceptual site plans, final site design plans, construction estimates, and traffic impact analyses for both residential and commercial development and expansion projects. These review services have addressed water and wastewater requirements, stormwater management/drainage calculations, utility connections, parking requirements, fire supply needs, traffic and roadway design, wetlands

delineation and mitigation, erosion and sedimentation control, structural design of retaining walls, and compliance with municipal regulations. Pare also provides construction observation of projects during construction phases to monitor compliance with the approved project plans and specifications.

Specific development projects which Pare has reviewed include:

- Poppasquash Road Minor Subdivision (residential)
- Elm Farm Subdivision (residential)
- Bristol Toyota Parking Expansion (commercial)
- Bristol Landing Condominium Complex (residential)
- East Bay Industrial Park Developments (industrial)
- Polk Court Extension (residential)
- Cox Court Subdivision (residential)
- Bristol Marina (recreational facility)
- ELJ Inc. (residential)
- Fonseca Development (residential)
- Franklin Business Park (industrial)

Relevant Project Features:

- *Review of conceptual, preliminary, and final site design plans.*
- *Review of traffic impact analyses.*
- *Review of stormwater management plans and drainage design.*
- *Construction observation and administration.*
- *Attendance at Technical Review Committee (TRC) and Planning Board meetings.*





Aquidneck Place Assisted Living Residence

Town of Portsmouth Engineering Consultation

Portsmouth, Rhode Island

Pare Corporation has provided engineering and review services to the Town of Portsmouth for over 15 years. Projects completed for the Portsmouth Water and Fire District include design of the Turkey Hill Pump Station, a Clean Water Infrastructure Replacement Plan, design of the Cove Bridge Water Line, and more.

Additional projects performed for the Town include design and construction observation for the replacement of the Sand Point Ferry Pier on Prudence Island; analysis, design, and permitting for a timber wave fence (breakwater) at the Sand Point Ferry Pier; and design of improvements to Benedict Avenue.

Multiple development review projects have been completed for the Town which included plan reviews, drainage design review,

wastewater design review, and traffic review. Pare was responsible for attending Town of Portsmouth Zoning Board hearings to discuss reviews and recommendations. The projects reviewed included:

- The Towers Ocean Resort, a 44-acre parcel to include a 780,000-SF resort/ conference complex.
- Freedom Bay, an assisted-care community with accessory communal buildings on 108 acres.
- Portsmouth Commons and Aquidneck Place, a 77,500-SF, 19-acre development of retail space and a 90-unit assisted- living facility.

Pare is currently providing review services for the Town of the EFSB Application from Mayflower Wind for a major off-shore energy facility.

Relevant Project Features:

- *Review of conceptual, preliminary, and final site design plans.*
- *Review of traffic impact analyses.*
- *Review of stormwater management plans and drainage design.*
- *Review of wastewater design.*
- *Attendance at Zoning Board meetings.*
- *Waterfront consultation and design.*
- *Roadway design.*
- *Construction observation.*



Ellis Pond Pedestrian Walkway Master Plan

**Norwood,
Massachusetts**

Project Owner: Town of Norwood

The Town of Norwood contracted Pare Corporation to design a pedestrian walkway to enhance the recreational value of the Ellis Pond area located in Norwood, Massachusetts. Pare developed a Master Plan for the project which includes approximately 9,410 linear feet of walkway around Ellis Pond and Guild Pond. The Master Plan included recommended construction phases to enable the Town to begin development of this Town asset.

Pare designed this recreational trail to minimize the impact to the natural areas surrounding Ellis Pond. The design includes vertical and horizontal alignments, necessary foot bridges, and strategically located overlooks, boardwalks, bench locations, and parking.

Pare performed many relevant services and investigations for the project. Initially, Pare performed site visits to identify a proposed alignment, to delineate all wetland areas along the proposed alignment, and to obtain pertinent field observations of the project area, including location of abutters, waterway crossings, and potential viewing areas. In addition, Pare performed supplemental ground surveys to establish a base line and to survey the wetlands.

Pare's design considered the environmental impacts to Ellis Pond and the surrounding site by using best management practices to optimize the selection of a possible alignment and by completing the wetland delineation early in the project. Erosion control and prevention measures were also reflected in the planned construction of the pathway.

Relevant Project Features:

- *Wetland delineation and permitting.*
- *Sedimentation and erosion control.*
- *Selection of boardwalk structure.*
- *Identification of location and alignment of walkway.*
- *Phasing of construction to optimize spending based on available funding.*

Town of Dedham
RFQ # 23CON003

Peer Review Consultant
Services for Dedham
Conservation
Department

Section 3

Personnel Qualifications



TOWN OF DEDHAM ON-CALL PEER REVIEW CONSULTANT SERVICES

Town of Dedham
Conservation Department

Project Supervisor
Lauren H. Gluck, PWS

Project Manager
Paul E. Orr

Principal-in-Charge
Michael J. Rongione, P.E.

Stormwater / Hydrology & Hydraulics

Robert J. Sykes, P.E.
Matthew E. Dunn, P.E., CFM

Wetlands / Environmental Science

Erika A. Klinkhammer
Sarah J. Pierce
Arianne W. Barton
Adam Dutra

Soils

Alan D. Hanscom, LSP
Michael P. Flynn, LSP, CHMM



REGISTRATIONS AND CERTIFICATIONS

Professional Engineer –
Massachusetts,
Rhode Island, Connecticut

OSHA Construction Safety
10-hour Training

MBTA Contractor ROW
Safety Certified

P&W Railroad Roadway
Worker Contractor Safety
Program

PROFESSIONAL AFFILIATIONS

American Society of Civil
Engineers

Precast/Prestressed
Concrete Institute

Construction Specifications
Institute

EDUCATION

Northeastern University:
M.S., Structural Engineering,
2000
B.S., Civil Engineering, 1990

RELEVANT EXPERIENCE

Mr. Rongione is an engineer with more than 29 years of industry experience. He has served as the Project Manager on numerous structural and construction-related projects, including life science facilities, schools, institutions, mass transit facilities, power facilities, manufacturing facilities, public safety facilities, pumping stations and a variety of underground structures including culverts, highway tunnels, air ventilation shafts, and slurry walls. His project experience includes developing horizontal and vertical structural designs, conducting structural condition assessments and evaluations, preparing building demolition contracts, performing pre- and post-construction inspections, and preparing plans, specifications, and cost estimates. Representative projects include:

- **Northbridge DPW Facility Feasibility Study & Site Design:** Structural Project Manager for redesign of Public Works facilities on existing site. Design also included roadway and parking layout, water and sewer design, and the design of a low impact bio-retention stormwater management system. Northbridge, MA.
- **Medfield Public Safety Facility Feasibility:** Structural Project Manager for conceptual design of a new police/fire facility. The study produced plans and outline specifications for cost estimating purposes. The work specifically included investigating utility availability and providing structural evaluation of existing Town Buildings. Multiple options were developed and reviewed which included utilization of existing buildings and new construction. Medfield, MA.
- **Amesbury DPW Facility Feasibility Study and Final Design:** Project Manager for conceptual design (25%) and final design of a new Department of Public Works Facility, following a site selection study. Conceptual design included wetlands delineations, survey, geotechnical investigations, and a preliminary environmental due diligence of the site. In addition to building footprint and interior configuration, schematic design included alternatives for site storage of vehicles and materials and traffic circulation. Final design consisted of a 12,000 +/- square foot pre-engineered metal building structure and connector link into the existing facility including a vehicle storage area, maintenance bays and hydraulic lifts, a designated wash area, workshop area, fluid storage rooms, a mechanics office and restrooms. The project also included the design of a 60' x 64' timber Hi-Arch Gambrel style salt shed. Amesbury, MA.
- **Sumner Street Culvert Replacement:** Senior Project Engineer for the design and development of contract documents for the replacement of an undersized stone masonry culvert with a double 4ft x 9ft precast box culvert designed to accommodate the flows associated with the 25-year storm. Norwood, MA.
- **Marshfield Station One:** Managing Engineer for overseeing the structural design for a new fire station including a two-story wood-framed administration building (4,000 SF) and a single-story steel and masonry emergency vehicle garage (4,000 SF). Responsibilities included structural design, preparation of bid documents, and construction administration services. Marshfield, MA.
- **MADCR - Lloyd Memorial Swimming Pool:** Managing Engineer responsible for the re-design of 8,250 square feet of an elevated timber deck with a concrete on metal deck structure. Responsibilities included

structural design, preparation of bid documents, and construction administration services. Melrose, MA.

- **Mattapoissett Dam Repairs:** Senior Project Engineer responsible for the design of concrete repairs to stabilize the stainless steel gates at the Mattapoissett Dam control structure. Duties included data collection, analysis of existing conditions, preparation of construction drawings, and preparation of technical specifications. Mattapoissett, MA.
- **Choate Pond Dam:** Project Manager for the structural design and bid documents associated with improvements to the existing spillway and low level outlet. Medway, MA.
- **Whittenton Mill Dam Emergency Actions:** Senior Project Engineer for the on-site emergency evaluation, response, design, and implementation of remedial measures for this 120-year old timber crib dam that threatened downstream Taunton and forced a temporary evacuation of the downtown area. Assisted with on-site assessments of potential emergency actions, reviewed the design of the implemented remedial measure, and coordinated with the local and state emergency response personnel. Taunton, MA.
- **DCAMM – MA State Police Academy Shooting Range Renovations:** Managing Engineer for overseeing the structural design for the renovations to New Braintree State Police Shooting Range. Responsibilities included structural design, preparation of bid documents, and construction administration services. New Braintree, MA.
- **MADCR – Brookwood Farm Barn Addition:** Managing Engineer for the design of a 1500 SF building addition to the existing Brookwood Farm Barn. The new barn and second floor loft are constructed as a timber framed structure design to be consistent with the historical character of the complex. Responsibilities included structural design, preparation of bid documents, and construction administration services. Canton, MA.
- **MADCR – Charles River Canoe & Kayak Building Repairs:** Managing Engineer for the timber, concrete, and masonry repairs to the existing historic “Storage Building”. Responsibilities included structural design, preparation of bid documents, and construction administration services. Newton, MA.
- **Town of Lincoln – Albion Fire Station:** Senior Project Engineer responsible for the preparation of the site plans for the addition to and renovation of the fire station. Also involved in the structural design of a concrete foundation and floor slab for a 60' x 60' pre-engineered building to garage fire trucks. Lincoln, RI.
- **Woonsocket Middle School Site Feasibility Study:** Senior Project Engineer responsible for providing overall project management for study of five sites under consideration as the location for a new 1,600-student middle school complex. Project options included the construction of a single new middle school, two new middle schools, a new high school combined with renovations to the existing high school for middle school purposes, and other options including a substantial modification of an existing building. Participation involved collecting and analyzing data from various sources, conducting field inspections, and evaluating the permitting implications of the various options. Woonsocket, RI.



**REGISTRATIONS AND
CERTIFICATIONS**

Professional Wetland
Scientist #2496

OSHA Construction Safety
10-Hour Training

OSHA HAZWOPER
40-hour Training

**PROFESSIONAL
AFFILIATIONS**

Society of Wetland Scientists

Association of Massachusetts
Wetland Scientists

National Society of
Collegiate Scholars

EDUCATION

University of Rhode Island:
B.S. in Wildlife and
Conservation Biology, 2006

Wetlands-related courses
include the following:
Intro to Soil Science,
Field Botany/Taxonomy,
Wetland Wildlife, Wetland
Ecology, Wetlands and Land
Use, Wetlands Field
Investigation, Marine Ecology

Introduction to ArcGIS I
March 2007

RELEVANT EXPERIENCE

Ms. Gluck is responsible for performing wetland delineations in accordance with the guidelines and criteria of the Massachusetts Department of Environmental Protection (MADEP), Rhode Island Department of Environmental Management (RIDEM), Rhode Island Coastal Resources Management Council (RICRMC), and the US Army Corps of Engineers (USACE). Additional responsibilities include environmental studies, wildlife habitat investigations, impact mitigation design, reports and permit applications for a variety of coastal and inland projects, including utility, highway, bridge, dam, and private development projects. Ms. Gluck is adept at aerial photo interpretation, and the use of GPS, GIS, and AutoCAD in the collection and display of field data to assist in the development of permit submissions and other documentation. Representative projects include:

- **Middleton Town Complex Master Plan:** Provided wetland delineations as part of the master plan prepared for a future town center to consist of several municipal buildings as well as passive recreational areas. The Wetland Report describes the limits, characteristics, and regulatory restrictions associated with each of the resource areas on the site. Middleton, MA.
- **Panas Road Wetland Delineation:** Delineated 2 miles of wetland within a 55-acre site that included open areas, natural woodlands, and abandoned gravel pits. Prepared a Wetland Delineation Report and appeared at a Public Hearing for an Abbreviated Notice of Resource Area Delineation. Currently monitoring two possible vernal pools on the site. Foxborough, MA.
- **242-244 Main Street Flagging:** Delineated extensive wetlands within an 80 acre site that included maintained horse pasture, shrub wetlands, natural woodlands, and stream channels, to assist with land use planning. Monitored flow conditions within two stream channels in order to determine whether either qualifies as an intermittent stream under 310 CMR 10.58 (2). Evaluated a potential vernal pool on the site. Foxborough, MA.
- **Franklin High School:** Completed wetland delineations at the site of a new High School to be completed on the site of the existing Franklin High School. Prepared a Notice of Intent for the proposed High School and associated facilities. Franklin, MA.
- **Marshfield High School:** Completed wetland delineations at the site of a new High School to be completed on the site of the existing Marshfield High School. Prepared a Notice of Intent for the proposed High School and associated facilities. Marshfield, MA.
- **Andover Multiple School Sites Wetland Delineations:** Completed extensive wetland delineations at multiple school sites in the Town of Andover for the purposes of planning for future improvements to the Town's school facilities. School sites included the Andover High School, West Middle School, Woodhill/High Plain School, Doherty Elementary School, and Sanborn Elementary School. Andover, MA.
- **Waltham Wayside Trail:** Responsible for wetland delineation and preparation of a Notice of Intent for the proposed 2.8-mile Waltham section of the Wayside Trail, a 23-mile shared use path on an abandoned railroad embankment extending from Bolton to Waltham. The Wayside Trail is a component of the Mass Central Rail Trail, a 104-mile shared use path that will connect from Northampton to Boston. Waltham, MA.

- **Southampton Greenway Feasibility Study:** Responsible for wetlands investigations and associated permitting requirements for a feasibility study of creation of Shared Use Path facility along a rail corridor. Southampton, MA.
- **Abington Co-Located Pre-K/Middle/High School:** Performed wetland delineations and provided environmental permitting services for a combined pre-Kindergarten/Middle School/High School on the site of the former high school building. Prepared a Notice of Intent for the proposed school and associated facilities and assisted with the design of a compensatory mitigation area to offset impacted wetlands. Abington, MA.
- **Wolf Hollow Visitor Center:** Responsible for wetland delineation and permitting in support of a new visitor center for Wolf Hollow, a non-profit wolf sanctuary and educational facility that promotes the preservation of the Gray Wolf in the wild through education and exposure. Ipswich, MA.
- **Willowdale Subdivision Wetlands Consulting:** Provided wetland delineation and permitting support for a residential subdivision project on a former golf course site heavily constrained by wetlands. Responsibilities included delineation of wetlands, preparation of a wetland delineation report for inclusion in permitting documentation; seasonal monitoring of a potential vernal pool and submission of a potential vernal pool monitoring study for review by the Conservation Commission; and providing support at public hearings throughout the permitting process. Mansfield, MA.
- **Multiple Dam Sites:** Responsible for the delineation of wetlands and resource areas at the dam sites to assist in determining impacts and impact minimization approaches. Prepared wetland data forms and assisted in the preparation of the Notice of Intent. These included, but are not limited to, the following projects:
 - Anawan Dam, Rehoboth, MA
 - Hobbs Pond Dam, Weston, MA
 - Terry Brook Reservoir Dam, Fall River, MA
 - Pearl Hill Dam, Townsend, MA
 - Crow Hills Dam, Westminster, MA
 - Brigham Pond Dam, Hubbardston, MA
 - Lake Maspenock Dam, Upton/Milford, MA
 - Paradise Pond Dam, Princeton, MA
 - Erikson Dam, Acton, MA
- **Haskell Pond Dam Rehabilitation:** Responsible for wetland delineations and environmental permitting for a water supply dam in Gloucester. Responsibilities included wetland delineations, assessment of potential mitigation sites, preparation of a Notice of Intent, MEPA Environmental Notification Form, Water Quality Certification. Submitted documentation to the US Army Corps of Engineers for coverage under the General Permit for Massachusetts. Gloucester, MA.
- **Paradise Pond Dam:** For the design of repairs to an existing dam and dike on the campus of Smith College. Responsible for wetland delineations and a detailed Wildlife Habitat Evaluation. Prepared a Notice of Intent, Environmental Notification Form, Chapter 91 Waterways License application, and Water Quality Certification. Submitted documentation to the US Army Corps of Engineers for coverage under the General Permit for Massachusetts. Northampton, MA.



**REGISTRATIONS AND
CERTIFICATIONS**

Certificate of Professional
Achievement in Construction
Project Management
(Northeastern University)

Certificate of Wetlands
Protection Act for
Conservation Commissioners
(Massachusetts Association
of Conservative
Commissioners)

**PROFESSIONAL
AFFILIATIONS**

Project Management Institute,
Mass Bay Chapter

EDUCATION

Hunter College, City
University of New York:

RELEVANT EXPERIENCE

Mr. Orr has more than 30 years of experience in various roles on environmentally related projects, including extensive experience developing and implementing strategic permitting programs, including managing the preparation of Environmental Impact Reports (EIRs) and Environmental Assessments/Environmental Impact Statements (EAs/EISs). He is proficient in managing the preparation of Wetlands and Waterways-related permits for infrastructure improvement, water supply/wastewater, transportation, and other construction projects. His experience includes the following projects:

- **Sudbury – MCRT Environmental Monitoring:** Project Manager for Environmental Compliance Monitoring and Construction Observation on behalf of the Town for the installation by Eversource of a new, 4.3 mile long subterranean 115kV underground electrical transmission line, and the construction of a portion of the Massachusetts Central Rail Trail (MCRT) from the existing Sudbury Substation to the Hudson town line. As the Independent Environmental Monitor, Pare is responsible for review of the erosion control barriers initially and annually; reviewing reports provided by Eversource’s environmental monitor; reviewing restoration/mitigation areas; providing observation during excavation for and installation of the wetland replication area; and will observe excavation/construction activities over culverts and drainage structures. Sudbury, MA.
- **Mashpee Water District - Regulatory and Environmental Peer Review:** Senior Project Manager responsible for the development and direction of the peer review process of the New Seabury Properties project, a large-scale residential/commercial development proposed to be sited within Zone 1 of two major public water supply wells. Responsible for representing the Mashpee Water District (MWD) and its interests during the MEPA public review process and at Cape Cod Commission hearings. Provided ongoing support to the MWD’s legal counsel relative to groundwater monitoring, water supply and potential impacts to the MWD’s wells. Mashpee, MA.
- **Environmental Permitting and Compliance Plans:** Technical Director and Client Services Manager responsible for providing expert testimony and adjudicatory support at the request of the client’s legal counsel pursuant to an enforcement action before the Boston Conservation Commission (BCC). Managed the development, review and approval, and implementation of both Comprehensive and Individual Wetlands Protection Plans for transportation and building construction valued more than \$2.5 billion. Concurrently addressed the concerns of the BCC, senior partners of the client firm, contractor resident engineering staff, in addition to managing a staff of eight personnel. Performed field observations and direct development and implementation of these plans to a level acceptable for approval by all stakeholders. Boston, MA.
- **Cambridge Department of Public Works - Combined Sewer Separation Program:** Environmental Permitting Manager responsible for lead coordination with the Cambridge Conservation Commission, the U.S. Army Corps of Engineers, the Department of Environmental Protection, and the Metropolitan District Commission. Provided technical and administrative review of dewatering permits for portions of the project involving MWRA sewers, which have been approved by the MWRA. Cambridge, MA.

- **Massachusetts Highway Department - Central Artery/Tunnel Project:** Project Controls/Senior Planner responsible for contracts management of the East Boston subarea of the CA/T project, with contracts valued more than \$250 million, including review and approval of change orders and cost and schedule forecasting.
- **MBTA - Silver Line Fort Point Channel Crossing:** Senior Project Manager responsible for the excavation and on-site remediation of lead-contaminated soil and subsequent backfill with controlled density fill (cdf) of more than 5,000 cubic yards (cy) of material in an area adjacent to the Fort Point Channel. Oversaw soil and dredged material treatment and disposal, wharf and seawall demolition and reconstruction, and excavation and cdf placement. Other responsibilities include supervision relative to permit conditions, environmental inspection, and, acted as liaison between the MBTA's consultant and contractor project management. Boston, MA.
- **Massachusetts Water Resources Authority (MWRA) - Southern High Service Extension Feasibility Study:** Environmental Permitting Manager responsible for development of permitting strategy and identification of Federal, State and local permitting requirements, including several wetlands crossings in adjacent resource areas; simultaneous coordination with the Conservation Commissions of eight different communities; coordination with local Departments of Public Works; preliminary consultations to be followed by filings with MEPA; Section 404/10 permits from the U.S. Army Corps of Engineers; and highway access permits from MassDOT. Assisted in review of past engineering and environmental investigations such as environmental permitting strategy, wetlands assessments, construction staging and methodology and community outreach information. Boston, MA.
- **Environmental Services/Environmental Documentation Administrator:** Participated in the preparation and review of the Charles River Crossing Draft and Final EIRs, more than 20 Notices of Project Change and two Section 61 Findings (MEPA); and, assisted in the preparation of Boston Conservation Commission Notices of Intent under the Wetlands Protection Act Regulations. Boston, MA.
- **MFN / Adesta Communications - Wetlands Protection Act Comprehensive Permitting:** Senior Project Manager responsible for the placement of polyvinyl chloride ducting to accommodate fiber optic cable optimized for Internet access along a 75-mile route through 14 communities in the Boston and Metro-North area. Responsible for compliance with the Wetlands Protection Act requirements for the entire route, including coordinating the preparation, internal QA/QC, client review and approval, and filing of Requests for Determination of Applicability (RDAs) and Notices of Intent (NOIs). Implemented strategies for permit acquisition; and developed design and construction methodology modifications aimed at streamlining and reducing permitting requirements. Boston, MA.
- **Everett Yard Staging and Laydown:** Manager of Environmental Compliance responsible for developing the Remediation Plan of Modern's Everett Yard laydown area, a 27-acre site requiring remediation under a Department of Environmental Protection (DEP) Administrative Consent Order (ACO) pursuant to both the Massachusetts Contingency Plan and Solid Waste regulations. Everett, MA.



**REGISTRATIONS AND
CERTIFICATIONS**

Professional Engineer -
Rhode Island, Maine

OSHA 10-hour Construction
Safety and Health Training

Title V Soil Evaluator -
Massachusetts

**PROFESSIONAL
AFFILIATIONS**

American Society of Civil
Engineers-
Rhode Island Chapter
Younger Member Group
Past Chair

EDUCATION

Complete Streets 101, 2016

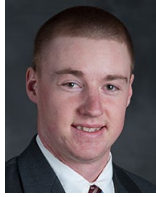
Wentworth Institute of
Technology:
B.S., Civil Engineering
Technology, 2013

RELEVANT EXPERIENCE

Mr. Sykes has nine years of experience in various aspects of civil and transportation engineering. He is proficient in a variety of engineering disciplines including roadway design, utilities, stormwater management, traffic analysis, and site design. Representative projects include:

- **Southborough Contracted Town Engineering Services:** Provided part-time engineering services for the Southborough Department of Public Works. Responsibilities include the preparation of bid documents for municipal construction projects, in-house design of multiple municipal facilities including conceptual layouts for a new transfer station, a hiking trail parking facility, various intersection improvements, and playground upgrades. Also providing engineering reviews for stormwater and traffic components of multiple proposed developments throughout the town and has aided in the preparation of the municipal permits including the Annual MS4 Permit. Southborough, MA.
- **Town of Bristol – On-Call Technical Review Consultant:** Project Engineer attending Technical Review Committee meetings for various on-call project reviews to the Town of Bristol Planning Department including, to date, the following project assignments:
 - *Seasons Corner Market*
 - *Storage Facility*
 - *August Farms Subdivision*
 - *Virgil Sales Subdivision*
 - *91 Broadcommon Road*
 - *549 Metacom Avenue*
 - *Massasoit Avenue Extension*
 - *Ridge Road Extension*
 - *206 Bayview Avenue*
 - *San Francisco Street Extension*
 - *Old Orchard Farm*
 - *1200 Hope Street*
 - *1202 Hope Street*
 - *180 Mt. Hope Avenue*
 - *Bristol Yarn Mill*
 - *2 Peter Road*
- **City of East Providence – Hundred Acre Cove Estates Review:** Senior Engineer for reviewing the Master Plan Submission and stormwater management report for the development of a 21 Lot Subdivision on Wampanoag Trail. Attended Planning Board meeting to provide engineering consultation for stormwater management, traffic, and construction standards. East Providence, RI.
- **Charlestown Storage Facility Review:** Project Engineer for reviewing the plans and FEMA Letter of Map Revision for Fill (LOMR-F) Submission for the development of a Storage Facility. Provided engineering consultation for the FEMA submission process and to determine if the proposed development was reasonably safe from flooding. Charlestown, RI.
- **Engineering Services – Town of Westerly:** Project Engineer for several projects for the Town of Westerly Engineering Department including: the design and construction services for the Pond View Avenue Reconstruction Project; and the development of as-built survey/record drawings of Nina Lane and Christopher Drive Road. Westerly, RI.
- **Fox Run Subdivision:** Provided construction services including consultation for design revisions and observations for the erection of a five-lot subdivision including the drainage and roadway improvements. Barrington, RI.

- **Town of Westerly – South Drive Development:** Provided construction services including consultation for design revisions and observations for the erection of a affordable housing development including drainage and roadway improvements. Westerly, RI.
- **Town of Southborough MS4 Permit:** Project Engineer for preparation and review of required materials for the Town's MS4 Permit. Documents included Town's Stormwater Management Program, Illicit Discharge Detection and Elimination Plan, Operation and Maintenance Plan, Notice of Intent, and various other resources for the Town's compliance. Southborough, MA.
- **Francis J. Varieur School Drainage Investigation:** Senior Project Engineer responsible for reviewing and overseeing the assessment and recommendations to alleviate drainage issues experienced at elementary school adjacent to the Max Read athletic field complex redevelopment. Pawtucket, RI.
- **I-95 Viaduct Northbound Providence - Design Build:** Project Engineer responsible for the drainage and stormwater design for the I-95 northbound viaduct replacement. Responsibilities included working with design staff, coordinating the interface throughout the disciplines of the project team, review of relative design materials, and quality assurance. Attended weekly meetings with the design team and contractor to coordinate the components from the proposal phase, through construction documents. Providence, RI.
- **RIDOT 2016 On-Call Transportation Engineering Services Task Order Program Round 1 – Stormwater/MS4 & EPA Compliance Contract C-6:** Project Engineer for assisting the RIDOT Office of Stormwater Management in complying with the 6 minimum measures and additional requirements of the MS4 Permit between the Department and EPA. The On-Call Task Order assignments included assisting RIDOT with requirements of the RIPDES general permit and EPA Consent Decree requiring the total maximum daily load (TMDL) requirements, the 303(d) listed impaired waterbody goals, illicit discharge detection and elimination (IDDE) requirements and implementing recommendations from various Stormwater Control Plans prepared under RIDOT's MS4 program. Assignments included the following projects:
 - **Lower Woonasquatucket River Watershed 10B:** Development of a Feasibility Study Report and Final Design Documents for construction and implementation of Stormwater Treatment Units (STUs) within the 10B Watershed in Smithfield, RI. Prepared hydraulic and hydrologic calculations and conducted various evaluations of specific best management practices for implementation within the MS4 Permit Areas.
 - **Sand Pond Stormwater Feasibility Study & Preliminary Design:** Development of a Feasibility Study Report and 30% Design Plans for assessing the feasibility implementation of Stormwater Treatment Units (STUs) and erosion controls adjacent to Sand Pond Road. This project was performed in partnership with RIDOT and Warwick Public Works.
 - **Roger Williams Park and Mashapaug Ponds Watershed 1C:** Development of a Feasibility Study Report for implementation of Stormwater Treatment Units (STUs) within the 1C Watershed within the Cities of Providence and Cranston, RI. As part of this scope, prepared preliminary hydraulic and hydrologic calculations, selected the locations and types of conceptual STUs and other evaluations of specific best management practices for implementation within the MS4 Permit Areas.



REGISTRATIONS AND CERTIFICATIONS

Professional Engineer –
Massachusetts, Rhode Island,
Connecticut, New Hampshire,
New York

Professional Land Surveyor –
Connecticut

Certified Floodplain Manager

Municipal Vulnerability
Preparedness (MVP) Provider

OSHA Hazardous Waste
Operations 40-Hour Health and
Safety Training

Troxler Nuclear Density Gauge
Training

PROFESSIONAL AFFILIATIONS

Association of State Dam Safety
Officials

Association of State Floodplain
Managers

Massachusetts Association for
Floodplain Managers

American Society of Civil
Engineers

EDUCATION

University of Rhode Island
M.S., Civil Engineering, 2012

University of Rhode Island
B.S., Civil Engineering, 2011

RELEVANT EXPERIENCE

Mr. Dunn has 10 years of consulting experience in H&H, dam, and geotechnical engineering. His H&H experience includes hydrologic and hydraulic modeling for a variety of riverine-based project types including watershed studies, dam assessments, dam removals, as well as bridge and culvert assessments/replacements. Project management experience includes staff management (schedule, task, assist, review), proposal development, budget tracking, project scheduling, subcontractor coordination, invoicing, client coordination (progress updates, meetings, RTC, grant assistance and coordination), and Updates to Procedures and Programs. Representative projects include:

- **Wekepeke Brook Restoration and Bartlett Dam Removal:** Engineer for the construction phase of the removal of Bartlett Dam and the restoration of the Wekepeke Brook. Duties included monitoring of the full removal and disposal of the existing dam structure, monitoring of the regrading of the natural stream channel, monitoring installation of a storm water pretreatment basin, field coordination, quantity tracking, reviewing project submittals, developing and implementing field changes as required, reviewing pay requisitions, attending weekly progress meetings, and maintaining daily field reports. Lancaster, MA.
- **Old Mill Dam Removal and Charles River Restoration:** Project engineer for the final design, bid, and construction stages of the removal of the Old Mill Dam along the Charles River. Scope of project included the removal of the existing concrete run-of-the-river dam and restoring the site to natural stream channel, installation of riprap scour protection along the banks of the restored channel, mechanically dredging the river upstream of the former dam, construction of an onsite containment berm to store the dredged material, and improvements to the existing storm water drainage systems along the roadway near the former dam location. Bellingham, MA.
- **Watershed Studies:** Project Manager and lead engineer for H&H modeling and other related analyses for the completion of planning level watershed wide studies. Recently completed for:
 - Bloody Brook (2mi²) Watershed Planning Level Study in Methuen, MA for the City of Methuen (*In Progress*)
 - Bentley Creek (52mi²) Supplemental Watershed Plan and Environment Assessment in Bradford County, PA and Chemung County, NY for the USDA-NRCS.
- **Hydraulic Capacity Assessment for Dams:** Project manager and lead engineer for H&H modeling to determine the hydraulic capacity of existing dams as well as to develop alternatives for increasing the hydraulic capacity of dams that do not meet state mandated design flood requirements. Recently completed for:
 - Peacedale Pond Dam in Wakefield, RI for Palisades Mill, LLC
 - Mill Pond Dam in Wareham, MA for MassDOT,
 - Milford Pond Dam and Cole River Dam in Swansea, MA
 - Harrisville Pond Dam located in Burrillville, RI
 - Sloccum Reservoir Dam in Exeter, RI for the American Baptist Churches of Rhode Island,
 - Sunset Lake Dam in Foxboro, MA for MADCR,
 - Snake Brook Dam in Wayland, MA,
 - Lake Aldersgate Dam located in North Scituate, RI for the Aldersgate Camp and Retreat Center,
 - Hawkins Pond Dam located in Glocester, RI,

- Harold Parker State Forest Dams (Five each) in Andover, MA for MADCR
 - Noquochoke Lake Dam in Dartmouth, MA for the City of Fall River
 - **Dam Removal Evaluations:** Project Manager and lead engineer for H&H modeling to identify and assess the changed hydraulic conditions that may occur within a river post dam removal. Recently completed for:
 - Upper Lake Noquochoke Dam in Dartmouth, MA for the City of Fall River
 - Whitney Pond Dam in Ashburnham, MA for the Town of Ashburnham
 - Temple Street Dam in Duxbury, MA for MADER
 - Upper and Lower Kickemuit Reservoir Dams in Warren, RI for BCWA
 - **Inflow Design Flood / Incremental Damage Assessments for Dams:** Project Manager and lead engineer for the completion of incremental damage assessments in support of inflow design flood studies for specific dams. Specific work includes detailed hydrological modeling, detailed two-dimensional hydraulic modelling, dam break analyses, inundation area development, incremental damage assessment pre- and post-failure, and inflow design flood determination. Recently completed for:
 - Hebronville Pond Dam in Attleboro, MA for the Preservation of Affordable Housing (POAH) Inc.
 - **Bridge and Culvert Replacement Projects:** Lead engineer for H&H modeling of bridge and culvert replacement projects throughout MA. Specific analysis include hydrologic modeling of the contributing watershed including model calibration, two dimensional hydraulic modelling of existing conditions, bank full width assessment, development of proposed replacement/repair alternatives, scour analyses, summary reporting and presentation of results to owner and project team, development of contract documents for the selected alternative, Recent projects include:
 - Mendon Road over the Iron Rock Brook in Woonsocket, RI for the City of Woonsocket (*In Progress*)
 - Pitas Avenue over the Sevenmile River in Attleboro, MA for the City of Attleboro.
 - East Rindge Road over the Bluefield Brook in Ashburnham, MA for the Town of Ashburnham.
 - US-20 Bridge Replacement over the Quabog River in Monson/Palmer, MA for MassDOT
 - Peckham Street Culvert Replacement in Attleboro, MA for the City of Attleboro
 - Elm Street Bridge Replacement in Wareham, MA as a subconsultant to Nitsch Engineering for the Town of Wareham.
 - Leonard Street Culvert Replacement in Norton, MA for the Town of Norton.
 - **Emergency Action Plans (EAP's):** Project Manager for the development of 50+ EAP's throughout MA inclusive of H&H analyses, 2D dam break modeling, inundation mapping, impacted infrastructure assessment and documentation, EAP report development, as well as implementation assistance. Statewide, MA.
-



REGISTRATIONS AND CERTIFICATIONS

OSHA Construction Safety
10-Hour Training

Certified Scuba Diver

AFFILIATIONS AND MEMBERSHIPS

Society of Wetland Scientists

Association of Massachusetts
Wetland Scientists

Pare Sustainability Committee

Pare GIS Committee

EDUCATION

University of Rhode Island:
B.S. Wildlife Conservation
Biology 2006

RELEVANT TRAINING

Qualified Compliance
Inspector of Stormwater
(QCIS) Rhode Island 2021

MassDOT/MassDEP:
Erosion Prevention &
Sediment Control Training
Program 2019

North Atlantic Aquatic
Connectivity Collaboration:
Lead Observer Training
(ongoing)

RELEVANT EXPERIENCE

Ms. Klinkhammer is an environmental scientist with nearly 10 years of experience applying environmental science towards site planning, design and development for civil, transportation, geotechnical and environmental engineering projects in Rhode Island and Massachusetts. Her responsibilities include environmental studies, impact assessments and alternatives analyses; avoidance, minimization, and wetland mitigation design; wetland identification, delineation and review; erosion and sediment control planning and implementation; construction-phase observation, environmental monitoring, reporting and permit compliance services; GPS/GIS mapping; and reports and permit applications for highway, utility, bridge, dam, commercial, educational and residential projects, both coastal and inland. Representative project experience includes:

- **Copicut Reservoir Dam Repairs:** Performed wetland replication monitoring and reporting to satisfy requirements under a Mitigation Proposal for the US Army Corps of Engineers. Wetland replication was designed and constructed for the project, which included repairs to a 3,500± foot long, 34-foot-high earthen dam that impounds an important municipal water supply. The project required the loss of approximately 27,390 square feet of wetland for which substantial mitigation within an adjacent location within the state parcel was provided, with ongoing mitigation site monitoring requirements. Fall River, MA.
- **Douglas King Builders – Queset Commons:** Worked closely with client and landscape contractor to construct a previously designed and permitted landscape project involving the construction of a Turtle Habitat Nesting Area and Wildlife Habitat Restoration and Enhancement Area. Duties included overseeing construction, field reporting, environmental monitoring, erosion control inspection and preparing an annual report detailing construction phase processes and planting survivorship to fulfill the Order of Conditions. Easton, MA.
- **Bay Colony Group, Inc.:** Execute numerous wetland consulting assignments under a Master Services Agreement. Assignments have included wetland delineations, wetland evaluations, and report preparation. Various Locations, Southeastern MA.
- **BCG Panas Road Construction Phase:** Designed and monitored wetland and buffer restoration areas for an industrial warehouse development. Environmental monitoring duties included assessment of plant survivorship, erosion control inspection, and site compliance with the applicable performance standards and Order of Conditions. Foxboro, MA.
- **Mother Brook Dam Construction Phase:** Performed environmental monitoring duties following maintenance repairs to the diversion structure. Oversaw mitigation plantings, prepared detailed monitoring reports and provided recommendations to the contractor for erosion control and invasive species remediation. Dedham, MA.
- **The Kraft Group Soccer Training Facilities:** Construction phase permitting support and observation for extensive Riverbank restoration work and wetland replication installation. Worked closely with contractor and team to construct the replication area, remove obsolete culvert structures for stream restoration, identify erosion and sediment transport issues, and

conduct and monitor Riverbank restoration activities. Prepared detailed observation reports to demonstrate permit compliance. Foxboro, MA.

- **Haverhill Riverbank Stabilization Project:** Environmental Scientist for the reconstruction and stabilization of a highly eroded riverbank along the Merrimack River at Riverside Park. Worked closely with Pare's project team to develop a site design that incorporated soft armor solutions while minimizing impacts to the adjacent riverine habitat and designed an ecological restoration landscape plan. Attended local public hearing as part of presentation team. The Project was permitted as an Ecological Restoration Project under the Massachusetts Wetlands Protection Act and required authorization under the Massachusetts Endangered Species Act. Prepared all permits and performed weekly construction-phase observation, environmental monitoring and reporting, erosion and sedimentation control inspection, and permit compliance services for the project. Haverhill, MA.
 - **Coal Pocket Pier Replacement:** Prepared several state and federal environmental permit applications and was main point of contact for regulators for a project involving full replacement of a fishing pier and maintenance improvements at adjacent wharves. Worked closely with Pare's engineering staff and attended Conservation Commission hearing for local regulatory approval. New Bedford, MA.
 - **Field Pond Dam and Dike Rehabilitation:** Completed wetland delineations and assisted in the preparation of multiple state and federal environmental permits and compensatory mitigation area design for the replacement of the spillway and low-level outlet at the dam, and necessary rehabilitation repairs to the dam and dike. Performed environmental monitoring duties including overseeing wetland replication area construction and monitoring, erosion control inspection, and preparation of monitoring reports for compliance with the applicable permits. Andover, MA.
 - **Horseneck State Beach Groundwater Discharge Permit Compliance:** Coordinated with the Massachusetts Natural Heritage and Endangered Species Program and local Conservation Commission to determine regulatory applicability, and avoidance and minimization measures for the directional drilling of an electrical conduit through an environmentally sensitive coastal dune and endangered species habitat. Oversaw construction activities, performed environmental monitoring duties and prepared detailed observation reports for compliance with MESA, local and state regulations. Westport, MA.
 - **CCRI Warwick Detention Basin Design:** Performed additional wetland delineations, documentation, and RIDEM environmental permitting for the redevelopment of the student parking lot and design of a substantial stormwater management system. Warwick, RI.
 - **Jamestown South Pond Dike Modification:** Delineated and classified freshwater wetlands in the vicinity of the coast and assisted in project permitting which included an application for Maintenance Certification for submission to the Rhode Island Coastal Resource Management Council (RICRMC), coverage under the US Army Corps of Engineers General Permit for Rhode Island, and RIDEM Water Quality Certification. The project involved the modification of the South Pond Dam and Dike, construction access design, and extensive alternative analyses for repairs to an earthen dam that impounds a municipal water supply. Jamestown, RI.
-



**REGISTRATIONS AND
CERTIFICATIONS**

OSHA Construction Safety
10-Hour Training

**PROFESSIONAL
AFFILIATIONS**

Pare GIS Committee (Chair)

Northeast Arc Users Group

RIGIS Users Group

Society of Wetland Scientists
– New England Chapter

Phi Kappa Phi Honors
Society

MA Audubon Society

EDUCATION

Westfield State University:
B.S. in Environmental
Science, with minors in GIS
and Applied Geography, 2014
Summa Cum Laude

RELEVANT EXPERIENCE

Ms. Pierce has eight years of experience as a member of Pare's Natural Resource staff. She is the Firm's Geographic Information Systems (GIS) lead in which role she oversees GIS business development, oversight of GIS-related assignments, and technical aspects of hardware, software, and data management. Her technical efforts consist primarily of utilizing ESRI products to compile site constraints mapping, georeference and digitize maps, perform geoprocesses to analyze data, and manage databases of various infrastructure. Additionally Ms. Pierce prepares reports, environmental studies, impact evaluations, and permit applications for a variety of coastal and inland projects. Representative projects include:

- **Southborough MS4 Compliance:** Assisted in the development of the following for the Town of Southborough, MA to meet requirements of a traditional MS4 under the NPDES program: Notice of Intent (NOI), Stormwater Management Program supplement, Stormwater Infrastructure Operation and Maintenance Plan, Illicit Discharge and Detection (IDDE) Plan. Additionally, completed a GIS inventory of stormwater infrastructure in town and assisted in dry weather outfall screening and sampling.
- **MassDOT – Swansea Wetland Delineation:** Assisted in the delineation of wetlands for a Massachusetts Department of Transportation intersection improvement project. Prepared Wetland Data Forms for a Wetland Delineation Report and compiled GIS figures for the site. Swansea, MA.
- **Abington Co-Located Pre-K/Middle/High School:** Compiled GIS figures for the site of a new school to be completed behind an existing High School. Used AutoCAD to calculate impacts to wetland resource areas within the project's limit of disturbance. Assisted in the preparation of a Notice of Intent for the proposed High School and associated facilities. Abington, MA.
- **Taunton State Hospital Building Demolition (DCAMM):** Assisted in wetland delineations and wetland data collection of an area adjacent to a proposed building demolition. Used GPS unit to accurately collect locations of wetland boundaries on the site. Compiled GIS figures and used AutoCAD to calculate impacts to wetland resource areas. Assisted in compilation of a Notice of Intent for the project. Taunton, MA.
- **MassDOT – Westport Wetlands:** Assisted in wetland delineation of an expansive wetland system on the south coast of Westport. Responsible for preparation of data forms for 10 wetland areas on the site. Assisted in the preparation of a wetland field report. Westport, MA.
- **Old Mill Pond Dam:** Compiled GIS figures and performed wetland connectivity calculations associated with the removal of Old Mill Pond Dam. Assisted in the preparation of both an Environmental Notification Form and Combined Licenses/Permits for Waterways & Water Quality Certification. Bellingham, MA.
- **Norton Reservoir Dam:** Assisted in the performance and documentation of wetland delineation for dam repairs in the town of Norton. Compiled GIS figures in ArcMap and calculated wetland impacts using AutoCAD for a Notice of Intent (NOI). Assisted with the preparation and submittal of the NOI. Norton, MA.

- **Town of Medfield Athletic Fields:** Responsible for the creation of GIS figures to analyze zoning and environmental constraints within multiple sites. Performed analysis using public data including shapefiles from MassGIS and town zoning maps. Medfield, MA.
- **Beverly Middle School:** Assisted in compilation of a Request for Determination of Applicability (RDA) for the demolition of an existing building and Notice of Intent for a new development at the demolition site. Beverly, MA.
- **Boston Planning & Development – Parcel V-1 Bulkhead and Pier 5 Cellular Sheet Pile Repairs:** Permitting lead for repairs to existing deteriorated structures on the South Boston waterfront. Responsible for compiling a Project Notification Form and Notice of Intent application. Responsible for the creation of all GIS figures for permitting use. Boston, MA.
- **Somerset Reservoir Dam H&H:** Performed stitching of LIDAR data to perform various geoprocessing including calculation of slope, flow direction, stream definition, and watershed delineation in accordance with the HEC-GeoHMS Users Manual. Final data is used in flow modelling and dam breach analysis modelling software. Somerset, MA.
- **Westborough High School Drainage Swale Evaluation:** Performed stitching of LIDAR data to perform various geoprocessing including calculation of slope, flow direction, stream definition, and watershed delineation in accordance with the HEC-GeoHMS Users Manual. Final data is used in flow modelling and dam breach analysis modelling software. Westborough, MA.
- **MADCR Significant Hazard Dam EAPs:** Responsible for geoprocessing multiple shapefiles and LIDAR images to create inundation figures to accompany Emergency Action Plans for 32 dams across Massachusetts. This included indexing structures and roadways within the limits of modelled inundation limits to assess damage of a potential dam failure event.
- **RIDOT – Stormwater/MS4 & EPA Compliance:** Provided environmental and GIS services to the RIDOT Office of Stormwater Management in complying with the six minimum measures and additional requirements of the MS4 Permit between RIDOT and EPA. The assignments included assisting RIDOT with the EPA Consent Decree requiring the total maximum daily load (TMDL) requirements, the 303(d) listed impaired waterbody goals, illicit discharge detection and elimination (IDDE) requirements and implementing recommendations from various Stormwater Control Plans prepared under RIDOT's MS4 program.
- **Town of Cumberland MS4 Compliance:** Provided environmental and GIS services for the Town of Cumberland in complying with the six minimum measures and additional requirements of a small MS4 Permit between the Town and EPA. Services included procedures to identify and remedy priority areas of illicit discharge investigation, developing standard operating procedures (SOPs) to trace and eliminate illicit discharges, develop SOPs to complete required dry weather surveys of outfalls, inventorying and sampling of MS4 outfalls, and Town responsibilities for illicit discharge detection and elimination. Cumberland, RI.



RELEVANT EXPERIENCE

Mr. Anderson has four years of experience in a variety of fields including land conservation and management, on-site wastewater treatment systems, anadromous fish passage, watershed hydrology, and GIS mapping. Since joining Pare in June of 2019, he has been involved in environmental permitting and site assessments, GIS mapping, wetland delineation, and soil characterization. Representative project experience includes:

- **The Kraft Group – Rand Whitney Industrial Development:** Performed wetland delineation and classification of wetlands. Prepared supporting delineation documentation and Notice of Intent application to MA DEP and Boylston Conservation Commission for the development of the light industrial complex. Prepared and received approval for a Beaver Management Plan to address issues with beaver activity. Coordination with contractor and project team throughout design of the site. Boylston, MA
- **WuXi Biologics – Manufacturing Facility:** Prepared Notice of Intent application to MassDEP and City of Worcester for the construction of a new pharmaceutical manufacturing facility. Worcester, MA.
- **Organogenesis – 275 Dan Road Improvements:** Performed wetland delineation, prepared supporting delineation documentation, and prepared Notice of Intent application to MA DEP and Canton Conservation Commission for site improvements to an existing development. Canton, MA
- **Town of Ashburnham – Whitney Pond Dam Removal:** Responsible for wetland delineations and documentation in support of the Whitney Pond Dam Removal. Prepared Environmental Impact Report and 401 Water Quality Certification for the dam removal. Ashburnham, MA
- **Whitin Reservoir Watershed District – Whitin Reservoir Operations & Maintenance Manual:** Performed Wetland Delineation, prepared delineation documentation, and prepared Notice of Intent for the ongoing operations and maintenance of the Whitin Reservoir. Douglas, MA
- **Bay Colony Group – Wetland Delineations:** Responsible for executing numerous wetland consulting assignments under a Master Services Agreement. Assignments have included wetland delineations, wetland evaluations, and report preparation. Various Locations - MA.
- **Edgewood Development Company – Wetland Delineations and Site Assessments:** Responsible for multiple wetland delineation and site assessments for potential development sites throughout Massachusetts. Assignments have included wetland delineations, ANRAD application, wetland evaluation, and report preparation. Various Locations - MA.
- **Bay State Vet – Site Selection:** Performed wetland assessments and wetland delineations for multiple sites throughout Massachusetts and one in Rhode Island. GIS mapping for each site for property evaluation. Swansea and Seekonk, MA and Coventry, RI
- **MassDOT – Mongo Pond Dam Emergency Repairs:** Performed wetlands delineation around the Mongo Pond Dam in support of emergency repairs required due to failure of a low-level outlet. Assisted in the preparation of MA DEP permit application documents. Palmer, MA

REGISTRATIONS AND CERTIFICATIONS

Post – Baccalaureate
Certificate in GIS and Remote
Sensing

OSHA 10-Hour Construction
Safety & Health

AFFILIATIONS AND MEMBERSHIPS

Soil Scientists of Southern
New England (Associate
Member)

Association of Massachusetts
Wetland Scientists

Society of Wetland Scientists

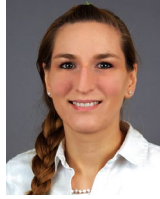
Northeast Arc Users Group

EDUCATION

University of Rhode Island:
M.S. Environmental Science
and Management, 2019

University of Vermont:
B.A., Geography, Fine Arts,
2014

- **Johnson and Wales University – Equestrian Campus:** Prepared Mass DEP and Town of Rehoboth wetlands permitting applications for the construction of a bridge on the Johnson and Wales Equestrian Campus. Rehoboth, MA.
- **City of East Providence – New High School:** Prepared RIDEM Request for Preliminary Determination application and supporting documentation for the demolition of the existing high school and construction of the new East Providence High School. East Providence, RI
- **Town of Smithfield – McCabe Elementary School Renovations:** Prepared RIDEM wetlands permit application and supporting documentation for an addition and site improvements to the Anna McCabe school. Smithfield, RI
- **Brisa Builders – Bernon Mill Redevelopment:** Performed wetland delineation, prepared supporting delineation documentation, and prepared RIDEM Request for Preliminary Determination application for the redevelopment of a former mill complex in Woonsocket. Woonsocket, RI
- **City of Woonsocket – Cass Park Improvements:** Performed wetland delineation, prepared supporting delineation documentation, and prepared RIDEM Request for Preliminary Determination application for Phase I earthwork for the addition of athletic fields at Cass Park. Woonsocket, RI
- **Kent County Water Authority – New Office/Maintenance Facility Site Selection:** Performed wetland assessments of five potential sites. Performed wetland delineation for the preferred site and prepared Request to Verify application to RIDEM. Received approval for delineated edge. West Greenwich, RI
- **Bristol-Warren Regional School District – Mount Hope High School Master Plan:** Performed wetland delineation and site assessment in support of a master plan for Mount Hope High School. Bristol, RI
- **Piramal Pharma Solutions – Facility Expansion:** Advised client on local and state wetland permit requirements and the application process for the expansion of a manufacturing facility in Michigan. Riverview, MI
- **H.V. Collins – 99 Gano Street Redevelopment:** Performed coastal wetland delineation and prepared CRMC State Assent application for the development of a multi-level residential apartment building on Gano Street. Providence, RI
- **Bristol County Water Authority – Kickemuit Reservoir Dam Removals:** Responsible for wetland delineation and assessment of areas surrounding the Upper and Lower Kickemuit Reservoir Dams in support of dam removal impact assessment. Preparation of RIDEM, CRMC, and USACE permit applications for the removal of both dams. Warren, RI
- **RIDOT – Stormwater Control Plan GIS Database Management:** Updated GIS features and attribute tables for proposed stormwater treatment units and catchment areas in RIDOT's online GIS Stormwater Control Plan portal. Providence, RI



REGISTRATIONS AND CERTIFICATIONS

OSHA 40-Hour Hazardous Waste Operations and Emergency Response Training

Hazardous Waste Generation and Pre-Transport Training Certified

Bloodborne Pathogen Training Certified

AFFILIATIONS AND MEMBERSHIPS

Massachusetts Association of Conservation Commissions

Board Member,
Conservation Commission
Bellingham, Massachusetts

Volunteer work,
environmental non-profit
organizations (Save the Bay,
GroundworksRI, Charles River
Watershed Association)

EDUCATION

Westfield State University
B.S. Environmental Science,
cum laude, 2014

RELEVANT EXPERIENCE

Ms. Barton is an environmental specialist with over 8 years of experience in Rhode Island and Massachusetts. Over her career, Ms. Barton has been involved with hundreds of projects involving environmental due diligence under the American Society for Testing and Materials (ASTM) Standard Practices in association with real estate transactions; investigatory and remedial design, implementation, and monitoring of releases to various environmental media, with the ultimate objective of Site closure; and compliance audits, training, and permitting under various environmental, health and safety agencies. Representative project experience includes:

- **Amesbury DPW Phase I ESA:** Performed a Phase I Environmental Site Assessment Update for site selected for proposed DPW relocation. Amesbury, MA.
- **City of Waltham – Illicit Detection and Discharge Elimination Program:** Staff environmental scientist for IDDE program to screen outfalls in priority sub-watersheds. The project includes indicator monitoring and sampling to characterize flow types and trace sources for 50% of the City's 340 outfalls. The project also includes characterization of inter-municipal connections and junction manholes showing illicit discharges. Responsible for outfall and inter-municipal inspections, sampling, and project coordination Waltham, MA.
- **Horton-Angell, Co. Phase I ESA:** Jewelry manufacturer that began operating in Massachusetts during the early 1800's. Initial assessment identified the potential for USTs and historical releases of chlorinated solvents, in addition to the potential for a substantial release migration due to the property's proximity to a resource area. Subsurface investigations confirmed the presence of chlorinated compounds in groundwater and in a limited area of soil, however the UST appeared to have been removed prior to the assessment. Release abatement measures are currently ongoing and consist of the operation of a sub-slab depressurization system to mitigate vapor intrusion and continued monitoring of groundwater, indoor air, and soil gas for contaminants of concern. Attleboro, MA.
- **Town of Barrington – Landfills 1 and 2 Post-Closure Environmental Monitoring:** Environmental scientist responsible for conducting quarterly groundwater and soil gas monitoring at Barrington Landfills 1 and 2, including detection and assessment monitoring per RIDEM Solid Waste Regulations. Tasks include groundwater sampling, landfill gas monitoring, data analysis, and quarterly report drafting. Barrington, RI.
- **Town of Barrington – Landfill No. 3 Site Investigations:** Staff environmental scientist for the investigation of a former landfill in accordance with Section 7 of the RIDEM Remediation Regulations through the RIDEM Voluntary Landfill Closure Program. Tasks included an initial field investigation (i.e., groundwater use survey, test pits, soil borings, surface water and sediment sampling, and landfill gas probe installation), post investigation monitoring (i.e., groundwater and gas monitoring), and preparation of a Site Investigation Report (SIR). Barrington, RI.
- **Tiverton Landfill – Groundwater Monitoring:** Environmental scientist for groundwater monitoring program, including detection and assessment monitoring per RIDEM Solid Waste Regulations. As part of the monitoring

program, Pare conducts statistical analysis of groundwater monitoring data and continues to make recommendations for additional monitoring when required. The monitoring program also includes surface water sampling and analysis, which is performed concurrently with the groundwater sampling. Tiverton, RI.

- **Narragansett Bay Commission ESAs:** Staff environmental scientist involved in completing several Environmental Site Assessments for the Commission in advance of constructing new storm water drainage facilities and improvements throughout the Providence area. Areas of contaminated soil were identified in advance of construction allowing proper soil management and costs to be incorporated into site design. Providence, RI.
 - **Narragansett Bay Commission Phase III CSO Program:** Senior Environmental Scientist for Pare's teaming role with Stantec on the Phase III CSO Program for the Narragansett Bay Commission. Responsible for permitting assistance through multiple agencies including US Army Corps of Engineers, RI Department of Environmental Management, and Coastal Resources Management Council. Responsibilities also include design efforts for the CSO tunnel treatment discharge system concerning sediment sampling/vessel traffic studies/wetland flagging in and along the Seekonk River, soil sampling, record drawings, and preparation of a Site Investigation Report (SIR). Providence Area, RI.
 - **Blackstone Valley Prep High School Environmental Engineering Services:** Staff environmental scientist for environmental engineering services associated with the proposed development of a new high school. Services included an initial site screening of the property that consisted of soil, groundwater, and soil gas sampling and administration of an environmental due diligence public meeting. Cumberland, RI.
 - **Blackstone Valley Prep Elementary School Phase I/II ESA:** Project environmental scientist involved in sampling and preparation of site remediation documentation for contaminated soil discovered during the construction phase of a new charter school. An Environmental Land Use Restriction (ELUR) was proposed for the contaminated soil remaining on site to maintain the engineered control. While remediation was straightforward, public notification requirements and chemical constituency evaluation were complicated by the proposed use of the site as a school. Pare worked closely with the owner, Town, and State to navigate the difficult regulations applied. Cumberland, RI.
 - **Henry J. Winters Elementary School Site Assessments and Remediation:** Principal environmental engineer responsible for site assessments related to design and construction of two new elementary schools and renovations to two existing schools for the Pawtucket School Department. Performed a Phase I ESA and complete geotechnical and environmental program, finding contaminate concentrations exceeding residential exposure requirements. Involved in holding a public meeting due to location within an Environmental Justice area, and coordination of remedial activities, including filing a Notification of Release with RIDEM, SIR preparation, and current preparation of a RAWP. Pawtucket, RI.
-



CERTIFICATIONS

USEPA Watershed
Management Training
Certificate

OSHA 10-Hour Training

EDUCATION

University of Idaho: M.S. in
Environmental Science, 2021

Rhode Island College:
B.S. in Environmental
Studies, 2018

RELEVANT EXPERIENCE

Mr. Dutra is an environmental scientist responsible for performing wetland delineations in accordance with the guidelines and criteria of the Massachusetts Department of Environmental Protection (MADEP), Rhode Island Department of Environmental Management (RIDEM), Rhode Island Coastal Resources Management Council (RICRMC), and the US Army Corps of Engineers (USACE). Additionally, his duties include impact assessments, environmental monitoring, reporting and permit compliance services; GPS/GIS mapping; and reports and permit applications for highway, utility, bridge, dam, commercial and residential projects. His previous experience as a forestry consultant and as a conservation intern with the Audubon Society have given him valuable experience. Representative projects include:

- **Brisa Builders – Carriage Grove Redevelopment:** Conducted wetland delineations and GPS survey in support of a housing development on a former state hospital site. Belchertown, MA.
- **Holliston Department of Public Works- 9 Green Street:** Conducted wetland delineation, identified invasive species and conducted GPS survey. Prepared wetland documentation, Notice of Intent Application and aided in the preparation of an Invasive Species Mitigation Plan. Holliston, MA.
- **Northborough Department of Public Works- Deerfoot Road:** Prepared Massachusetts Request for Determination of Applicability (RDA) for a drainage improvements project located within a residential property. Northborough, MA.
- **Town of Milford – Echo Lake Improvements:** Performed wetland delineations, GPS survey, and wetland delineation documentation for a proposed weir replacement project. Amesbury, MA.
- **North Attleboro Conservation Commission:** Performed site visit and prepared RDA for dam improvements project including spillway repair, and Japanese Knotweed Mitigation Project. North Attleborough, MA.
- **Town of Amesbury – Powwow River:** Performed wetland delineations, GPS survey, and wetland delineation documentation for the site of Echo Lake Dam. Milford. MA
- **Town of Gloucester – Haskell Pond Dam:** Prepared Water Quality Certification for Dam Improvements Project. Gloucester, MA.
- **Town of Hopkinton – Lake Maspenock Dam:** Prepared wetland documentation, Notice of Intent, Project Notification Form and USACE Self-Verification Application for Dam Improvement Project. Milford, MA.
- **Town of Dudley – Carpenter Pond:** Performed wetland delineations, GPS survey, and wetland delineation documentation for the site of the Carpenter Pond Dam. Conducted a wetlands and wildlife review of the site and using GIS prepared aerials of the site representing the various types of wetlands found within the complex. Dudley, MA.
- **Town of Swansea- Milford Pond Dam:** Performed wetland delineations, GPS survey, and wetland delineation documentation for the site of the Milford Pond Dam in preparation for future improvements. Swansea, MA.

- **MADCR – Golf Cart Paths Design:** Performed wetland delineations, GPS survey, and wetland delineation documentation for the sites of Ponkapog and Leo J. Martin Memorial Golf Courses for the proposed cart path improvements project. Prepared field maps portraying locations of wetlands delineated on sites. Weston, Canton, and Newton, MA.
- **MADCR – Leo J. Martin Maintenance Facility:** Prepared Notice of Intent for the proposed improvements of the Mass DCR maintenance facility located on the site, including the resurfacing of a portion of existing parking lot, removal of demolished building remnants and the erection of a new 20'X30' storage shed. Newton, MA.
- **MADCR – Taunton River Trail at Sweet Knolls State Park:** Assisted in wetland delineation and GPS survey along approximately two miles of a former rail-way easement, in support of the forthcoming Taunton River Trail bike path. Assisted with preparation of wetland delineation documentation including U.S. Army Corps of Engineers (USACE) data forms. Dighton, MA.
- **City of Amesbury – Friend Street Drainage Improvements:** Prepared Notice of Intent (NOI) application for proposed culvert replacements and dam repairs for the City of Amesbury. Amesbury, MA.
- **Edgewood Development Company, Inc. – Redbird Farm Potential Vernal Pool Evaluations:** Conducted assessments of fifteen isolated wetland depressions identified as potential vernal pools (PVPs) on an 111-acre wooded site as part of due diligence for potential development. on a property. Wrentham, MA.
- **Bay State Vet - Wetland Delineations and Site Assessments:** Performed wetland delineations and GPS survey for a proposed veterinary office development site. Swansea, MA.
- **Town of Somerset – Dam Improvement Project:** Performed wetland delineations, GPS survey, and wetland delineation documentation for the site of the Somerset Reservoir Dam. Somerset. MA
- **Preservation of Affordable Housing – Hebronville Pond Dam & Culvert Repair:** Prepared a Notice of Intent to conduct required work on a dam and vertical retaining walls located on the Ten Mile River. Attleboro, MA.
- **Preservation of Affordable Housing-Gardner Terrace & Hebronville Mill:** Prepared Notice of Intent for the pavement rehabilitation, landscaping and ADA Improvements within the Hebronville Mill Apartment area. Attleboro, MA.
- **Providence Water Supply Board – Johnston Tank Site:** Conducted wetland delineation and prepared wetland documentation for future permitting of a water tank on an undeveloped property. Assisted in a wildlife habitat assessment in support of a future Application to Alter. Johnston, RI.
- **City of Pawtucket – Public Recreation Facility Feasibility Study:** Assisted in wetland and coastal feature delineation in accordance with CRMC criteria. Prepared wetland delineation documentation in support of future CRMC permitting. Pawtucket, RI.



**REGISTRATIONS AND
CERTIFICATIONS**

MA Department of
Environmental Protection
Licensed Site Professional

**AFFILIATIONS AND
MEMBERSHIPS**

Licensed Site Professional
Association

Water Environment
Federation

EDUCATION

University of Maine,
Orono - B.S., Civil
Engineering, 1976

RELEVANT EXPERIENCE

Mr. Hanscom has over 40 years in the engineering and environmental consulting industry. He has a broad range of experience focused primarily on site/civil design projects, including dozens of projects involving underground water, sewer and drainage utilities, and all phases of environmental permitting, design, and site remediation. He has a comprehensive understanding of the many federal, state, and local environmental laws and regulations dealing with environmental issues for a variety of clients, including public agencies, municipalities, developers, utility companies, manufacturers, and other private sector clients. Relevant engineering experience includes:

- **City of Chicopee – Uniroyal and Facemate Brownfields Projects:** Responsible for LSP services, demolition, brownfields redevelopment and regulatory permitting for cleanup of one of the largest Brownfields sites in Massachusetts. This project included overall guidance and technical support for multiple environmental assessments under the MCP and TSCA; technical support for over a dozen grant and loan applications for USEPA, HUD and MassDevelopment funding programs; beneficial use determinations (BUD) & re-use of coated asphalt, brick, and concrete; hazardous waste characterization and management (toxic chromium wastes in dye vats); design of MCP site remediation and building demolition contracts, with emphasis on bid items for equitable compensation; preparation of Activity & Use Limitations (AULs) and Permanent Solutions with Conditions (PSWC); development of a Fill Management Plan (FMP) for backfilling the Site with RCS-1 and RCS-2 soils to prepare the Site for redevelopment, including the generation of >\$1 Million in net revenue from soil tipping fees; and technical support for negotiating cleanup and Risk Based Disposal Plan (RBDP) for portions of the Site by the PRP. Chicopee, MA. Chicopee, MA.
- **Town of Weymouth - Smelt Brook Daylighting:** Coordinated and oversaw the engineering design and construction of a precast concrete culvert to daylight approximately 150 linear feet of Smelt Brook. The project was constructed in three phases: Phase 1 included repairs to an existing structure on the town line between Weymouth and Braintree, including asbestos abatement, re-facing the building exterior with new brick masonry and siding, and repairs to the existing roofing and parapet; Phase 2 consisted of the daylighting of 150 linear feet of underground stone masonry culvert with a 8' by 10' deep precast concrete culvert, including installation of substrate to support smelt migration and reproduction in the Weymouth Landing area; and Phase III included replacement of an additional eighty (80) linear feet of stone masonry culvert under Route 53. Challenges included relocation of water and sewer utilities, traffic control during the winter months, and cleanup of PCBs from abandoned gas mains. Weymouth, MA.
- **Consolidated Equipment Site Remediation:** Provided LSP services related to environmental assessment and remediation of petroleum- and VOC-impacted soil and groundwater at a former tannery/chemical tank farm. The project included a subsurface investigation; design of a groundwater pumping, treatment (granular activated carbon) and recirculation system; monitoring and MCP reporting of remediation system operation; and preparation and filing of an Activity & Use Limitation (AUL) and Permanent Solution Statement with Conditions (PSSC). Peabody, MA.

- **Shoreline Marine Terminal:** Project Manager for the redevelopment of the former Revere Copper Products Plant. Project includes significant environmental cleanup actions involving free product and groundwater contaminated with heavy metals, renovation of 60,000 sf of space for seafood processing facilities, new electrical service, stormwater permitting and design, a new rail spur, underground utilities, demolition of several industrial buildings and extensive structural, geotechnical, and site/civil support services. New Bedford, MA.
- **Brisa Construction** – Redevelopment of the former Baskin Property. Mr. Hanscom has been responsible for LSP services associated with cleanup of the Site and subsequent coordination and oversight of site/civil design and permitting activities. The project includes renovation of an existing mill building for a brew pub, a 102-unit residential housing building, and a 50,000 sf pre-engineered athletic building. Chicopee, MA.
- **Revere Copper Products Site Remediation:** Provided LSP and related professional services for the remediation of multiple MCP releases. Primary activities included on-site treatment of metals-impacted groundwater to eliminate a substantial release migration of impacted groundwater to the Acushnet River (copper concentrations in groundwater were reduced by over 95%); in-situ characterization and dual phase recovery of petroleum-impacted groundwater under the former heat-treating industrial buildings; and oversight of disposal of various building materials and waste streams throughout the facility, including wooden wear blocks (flooring), asbestos building materials, pickling wastes, heavy metals/debris, miscellaneous containers of oil and hazardous materials, etc. Services also included preparation of estimates of probable costs for dealing with ongoing site remediation, building decontamination, stormwater system cleaning, groundwater sampling and analyses, MCP reporting, etc.; monitoring of storm water discharges under a NPDES discharge permit; and preparation and filing of a Remedy Operation Status submittal under MCP regulations. New Bedford, MA.
- **City of Boston – East Boston Greenway:** Provided LSP support for the design of an urban rail trail project. Tasks included in-situ characterization, risk assessment, and on-site washing and re-use of over 2,000 cubic yards of lead and arsenic-impacted ballast in the subsurface drainage system. Boston, MA.
- **New Middle School Project:** Managed the assessment and strategic cleanup-on-site management of PCB-impacted materials under a TSCA Risk Based Cleanup Plan at the site of a new middle school. New Bedford, MA.
- **Chemical Applications Site Remediation:** Project Manager for the development of remedial action measures for heavy metal contamination exceeding state limits. Response also included vapor intrusion mitigation via a subsurface depressurization system (SSDS). Peabody, MA.



REGISTRATIONS AND CERTIFICATIONS

MA Department of
Environmental Protection
Licensed Site Professional

Certified Hazardous Materials
Manager, CHMM

OSHA Hazardous Waste
Operations 40-Hour Health
and Safety Training

OSHA Construction Safety
10-Hour Training

OSHA Hazardous Waste
Operations 8-Hour
Supervisor's Training

PROFESSIONAL AFFILIATIONS

Licensed Site Professional
Association, Boston, MA

Institute of Hazardous
Materials Management
Rockville, MD

EDUCATION

University of Massachusetts
Amherst:
B.S., Environmental Science
1986

RELEVANT EXPERIENCE

Mr. Flynn is an Environmental Scientist, Licensed Site Professional, Certified Hazardous Materials Manager, and Project Manager with excellent leadership, management, technical, and client service skills. Mr. Flynn has over 36 years of consulting experience working on a broad range of environmental projects including comprehensive site investigations at both Massachusetts and Rhode Island hazardous waste disposal sites including petroleum release sites, industrial facilities, urban burn dumps, and municipal infrastructure projects. He has completed numerous ASTM property transfer studies and initial site investigations. Mr. Flynn has performed Method 1 and Method 3 risk characterizations leading to response action outcome statements with and without activity and use limitations.

- **Chemical Applications Site Remediation:** Environmental Scientist for the development of remedial action measures for heavy metal contamination exceeding state limits. Response also included vapor intrusion mitigation via a subsurface depressurization system (SSDS). Peabody, MA.
- **Bristol County Water Authority (BCWA) Hope Street Tank Site Investigation:** Principal Environmental Scientist responsible for completing an extensive site investigation and study evaluating the extent of lead contamination at the site. Areas of contaminated soil were identified in advance of construction allowing proper soil management and costs to be incorporated into the site design. Bristol, RI.
- **Bristol County Water Authority (BCWA):** Principal Environmental Scientist providing technical support on evaluating environmental conditions and hazardous building material surveys at the Shad Factory Pump Station and Nayatt Road Pump Station. Bristol, RI.
- **Narragansett Bay Commission:** Principal Environmental Scientist responsible for completing several Environmental Site Assessments for the Commission in advance of constructing new stormwater drainage facilities and improvements throughout the Providence area. Areas of contaminated soil were identified in advance of construction allowing proper soil management and costs to be incorporated into site design. Providence, RI.
- **City of Woonsocket – Water Treatment Facility:** Principal Environmental Scientist responsible for completing several Environmental Site Assessments for the City of Woonsocket in advance of constructing a new water treatment facility and improvements to the transmission lines. Areas of contaminated soil have been identified in advance of construction allowing proper soil management and costs to be incorporated into site design. Woonsocket, RI.
- **City of Central Falls – Environmental Site Assessment:** Principal Environmental Scientist responsible for completing several Environmental Site Assessments for Central Falls at several sites located in the Northeast corner of the City. These sites were identified as contaminated during recent investigations and were successfully remediated as public recreational facilities. Central Falls, RI.
- **Rhode Island Department of Transportation:** Principal Environmental Scientist responsible for completing several Environmental Site Assessments for the department in advance of transportation improvement projects in Providence, Newport, Woonsocket, Cumberland, Wakefield, and

Middletown RI. Mr. Flynn is well experienced with performing environmental assessments in mixed-use, urban settings with complex site features affecting assessments. Areas of contaminated soil have been identified in advance of construction allowing proper soil and groundwater management and costs to be incorporated into the site design. Statewide Rhode Island.

- **Cambridge Sewer Separation – Environmental Assessment Utility Related Abatement Measures:** As Senior Environmental Scientist and LSP-designee for the project, Mr. Flynn oversaw environmental assessment activities performed prior to major utility improvement work being performed on Cambridge Sewers. Mr. Flynn was responsible for evaluating hundreds of potential sources of oil and hazardous materials and estimating the impact upon construction activities and costs. Cambridge, MA.
- **East Boston Piers – Site Restoration:** As Senior Environmental Scientist and LSP-designee for the project, Mr. Flynn oversaw soil handling and characterization efforts implemented during the successful restoration of contaminated waterfront property to public park grounds. Boston, MA.
- **City of Everett - Remedial Assessment and Design at School Construction Sites:** As Senior Environmental Scientist, Mr. Flynn developed and oversaw the subsurface investigation activities associated with the MCP Phase I and II site assessment activities for two proposed construction sites of new school buildings. Mr. Flynn attended and spoke at several meetings with public officials regarding the approach and progress of remedial activities at the sites. Everett, MA.
- **Remedial Design and Site Restoration, State-Confirmed Waste Disposal Site:** Project Scientist and LSP-designee assigned to implement remedial activities at a confirmed hazardous waste site contaminated with PCBs, PAHs, lead and arsenic. The project involved excavation and disposal of TSCA and RCRA regulated waste, as well as recycling soil in accordance with Massachusetts DEP policies and the MCP (310 CMR 40.000). Mr. Flynn directed the field characterization and contaminant delineation phase of the project and assisted the LSP of record develop the remedial design specification package. The site has been satisfactorily remediated, and a remedial action outcome statement and final inspection report have been prepared for submission to the DEP. Newburyport, MA.
- **East Providence High School – Phase II ESA and SIR:** Senior Environmental Scientist responsible for Phase 2 ESA and SIR scope of work for the existing East Providence High School prior to the construction of a new school at the same site. The objective was to identify potential areas of recognized environmental concern in advance of construction to allow for proper soil management and costs to be incorporated into site design. Tasks included data collection, site reconnaissance, soil and groundwater sampling, and report drafting. East Providence, RI.
- **Forensic Environmental Investigation, North Gloucester Septic Tank Effluent Program (STEP):** Mr. Flynn was the lead scientist on the project, responsible for developing the scope of investigations, overseeing technical staff, evaluating results and communicating the results to the LSP of record and City officials through a series of oral reports, public meeting, technical memoranda and reports which were submitted to the DEP. Gloucester, MA.

Town of Dedham
RFQ # 23CON003

Peer Review Consultant
Services for Dedham
Conservation
Department

Section 4
References



CLIENT REFERENCES

Client	Project
Town of Sturbridge 308 Main Street Sturbridge, MA 01566 Jean Bubon, Town Planner (508) 347-2508	Planning Board Engineering Review Services <i>Sturbridge, MA</i>
City of Amesbury 62 Friend Street Amesbury, MA 01913 Robert Desmarais Jr., P.E., Director of Public Works (978) 388-8116	On-Call Engineering Services <i>Amesbury, MA</i>
Town of Braintree 1 JFK Memorial Drive Braintree, MA 02184 John Thompson, Assistant DPW Director/Town Engineer (781) 794-8013	On-Call Engineering Services <i>Braintree, MA</i>
MA Department of Conservation and Recreation, Office of Dam Safety 251 Causeway St Boston, MA 02114 William Salomaa, ODS Director (781) 794-8013	Master Service Agreement / On-Call Engineering Services since 2000 <i>Statewide, MA</i>
The Kraft Group 1 Patriot Place Foxboro, MA 02035 Ted Fire, VP Construction & Development 508-384-4310	New England Revolution Training Facility Permitting and Environmental Services <i>Foxboro, MA</i>
Town of Portsmouth, RI 2200 East Main Rd Portsmouth, RI 02871 Brian Woodhead, DPW Director 401-683-0362	Municipal Consulting since 2004 <i>Portsmouth, RI</i> Mayflower OSW EFSB Application Review <i>Portsmouth, RI – Currently under review</i>

Town of Dedham
RFQ # 23CON003

Peer Review Consultant
Services for Dedham
Conservation
Department

Appendix
Required Forms



ATTACHMENT C

CERTIFICATE OF NON-COLLUSION

The undersigned certifies under penalties of perjury that this bid or proposal has been made and submitted in good faith and without collusion or fraud with any other person. As used in this certification, the word "person" shall mean any natural person, business, partnership, corporation, union, committee, club, or other organization, entity, or group of individuals.



(Signature of person signing bid or proposal)

Michael J. Rongione, Sr. Vice President

Pare Corporation

(Name of Business)

ATTACHMENT D

CERTIFICATE OF TAX COMPLIANCE


Pursuant to Chapter 62C of the Massachusetts General Laws, Section 49A(b), I,

Michael J. Rongione, authorized signatory for

Pare Corporation, do hereby certify under the pains and penalties
(Name of Contractor)

of perjury that said contractor has complied with all laws of the Commonwealth of
Massachusetts relating to taxes, reporting of employees and contractors, and
withholding and
remitting child support.

CONTRACTOR

By: 

(Signature of Authorized Representative)

Title: Senior Vice President

Date: October 31, 2022

ATTACHMENT E

CERTIFICATE OF CORPORATE AUTHORITY

At a duly authorized meeting of the Board of Directors of Pare Corporation

(Name of Corporation)

held on 2/15/22 it was VOTED that:
(Date)

Michael J. Rongione
(Name)

Senior Vice President
(Officer)

of this corporation, be and he/she hereby is authorized to execute contracts, deeds and bonds in the name and on behalf of said corporation, and affix its corporate seal hereto; and such execution of any contract, deed or obligation in this corporation's name on its behalf by such Senior Vice President under seal of the company, shall be valid and binding upon this
(Officer)
corporation.

A True Copy,

ATTEST: *Matthew Bellisle*

TITLE: COO/Clerk

PLACE OF BUSINESS: 101 Incoln Rd, Suite 210

Foxborough, MA 02035

DATE OF THIS CERTIFICATE: October 31, 2022

I hereby certify that I am the clerk of the Pare Corporation
that Michael J. Rongione is the duly elected Senior Vice President of said corporation, and that the above vote has not been amended or rescinded and remains in full force and effect as of the date of this contract.

J. Matthew Bellisle
(Clerk)

CORPORATE SEAL:

ATTACHMENT F

RFQ # 23CON003 On-Call Peer Review Consultant Services for Dedham Conservation Department

SIGNATURES

(IF AN INDIVIDUAL)

Date _____, 20____

Signature of Bidder _____ (SEAL)
(Owner and Proprietor)

Business Name D/B/A _____

Business Address _____

(IF A CO-PARTNERSHIP)

Date _____, 20____

Firm Name _____ (SEAL)

By _____ (SEAL)

Business Address _____

Names and Addresses _____

of all _____

Members of Firm _____

(IF A CORPORATION)

Date October 31, 2022

Corporate Name Pare Corporation

By Michael J. Rongione, Senior Vice President
President or Authorized Agent*

Business Address 10 Lincoln Road, Suite 210

Foxboro, MA 02035

*Statement of authorization, duly signed by proper authority, to be attached hereto

RFQ # 23CON003 On-Call Peer Review Consultant Services for Dedham Conservation Department

**RESOLUTION
SIGNING AUTHORIZATION**

I certify that I, J. Matthew Bellisle, am the Clerk of Pare Corporation, and as an authorized officer of Pare Corporation, I certify that by vote of the Board of Directors during a normally scheduled meeting on February 15, 2022 the following individuals, as officers of the firm, have been authorized to sign contracts and other legally binding documents on behalf of Pare Corporation.

- Larry D. Riggs – President
- John P. Shevlin – CEO/Senior Vice President
- J. Matthew Bellisle – COO/Senior Vice President
- Michael J. Rongione – Senior Vice President
- Timothy P. Thies – Senior Vice President
- Walter P. Heller – Senior Vice President
- Carl J. Adamo – Vice President
- Allen R. Orsi – Vice President
- David L. Potter – Vice President
- Kevin M. Champagne – Vice President
- Alan D. Hanscom – Vice President
- Gregory N. Berube – Vice President
- David L. Loring – Vice President



Signature

Date: 3/15/2022

J. Matthew Bellisle
Clerk
Pare Corporation

AFFIX COMPANY SEAL

I, COLLETTE L. GAGNON (NOTARY) as a notary public, certify that I witnessed the signature of the aforementioned signatory above and I verified the individual's identity on this date:

MARCH 15, 20 22

My commission expires on: 3/28/2025

COLLETTE L. GAGNON
Notary Public
State of Rhode Island
My Commission Expires 03/28/2025
ID # 36771

AFFIX NOTARY SEAL



**8 Blackstone Valley Place
Lincoln, RI 02865
401-334-4100**

**10 Lincoln Road, Suite 210
Foxboro, MA 02035
508-543-1755**

**14 Bobala Road, Suite 2B
Holyoke, MA 01040
413-507-3448**

www.parecorp.com