



DEDHAM PUBLIC SAFETY FACILITY

Project Site



Town Hall – Replaced By Public Safety Building



Neighborhood – Dedham Square



Neighborhood – Dedham Square



Neighborhood – Dedham Square



Neighborhood – Petruzziello Plaza



Neighborhood – Petruzziello Plaza



Neighborhood – Ames Schoolhouse



Programming Questionnaire

260 Merrimac St. Bldg. 7
Newburyport, MA 01950
978.499.2999 (P)
978.499.2944 (F)

212 Battery St.
Burlington, VT 05401
802.843.1428 (P)
802.843.6955 (F)

DoreAndWhittier.com



Is a new or renovated Training/Community Room anticipated as part of the project scope?

Choose ▾

How many shifts do you currently run per day?

Choose ▾

What is the current staffing level per shift?

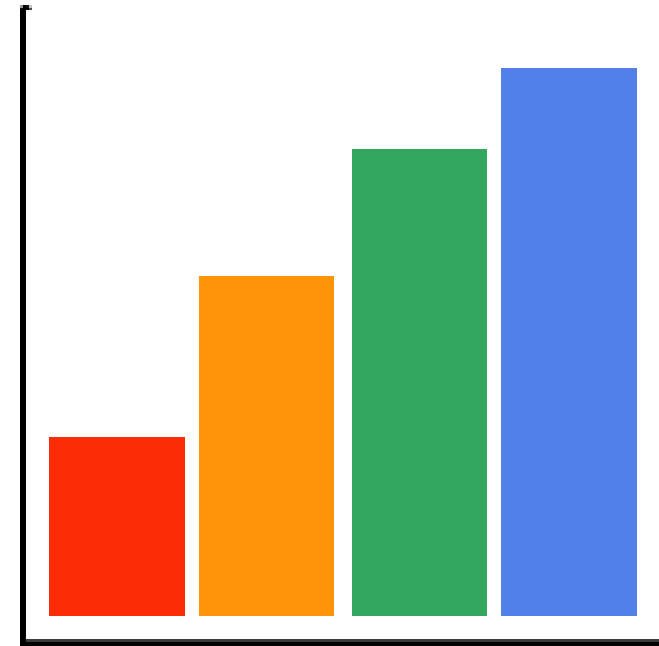
Choose ▾

What is your current daily administrative staffing level?

Choose ▾

SUBMIT

Page 1 of 1



Analysis of results

PROGRAMMING

PROGRAMMING

DEDHAM FIRE DEPARTMENT - SPACE NEEDS ANALYSIS

ROOM OR SPACE	Area Standard per Space, Room, or People	# Spaces, People, or Fixtures Calculated	Initial Calculated Area	# Spaces, People, or Fixtures Suggested	Space Needs Allocation			Hazard Zone Color	Comments	Additional Notes
					High	Medium	Low			
Public Areas										
Other Public Space										
Totals:			356							

DEDHAM POLICE DEPARTMENT - SPACE NEEDS ANALYSIS

ROOM OR SPACE	Area Standard per Space, Room, or People	# Spaces, People, or Fixtures Calculated	Initial Calculated Area	# Spaces, People, or Fixtures Suggested	Space Needs Allocation			Hazard Zone Color	Comments	Additional Notes
					High	Medium	Low			
Visitor Areas										
Other Visitor Space										
Totals:										calculated minimum per code calculated minimum per code 30" wide lockers 30" wide lockers

DEDHAM PUBLIC SAFETY - SHARED SPACES - SPACE NEEDS ANALYSIS

ROOM OR SPACE	Area Standard per Space, Room, or People	# Spaces, People, or Fixtures Calculated	Initial Calculated Area	# Spaces, People, or Fixtures Suggested	Space Needs Allocation			Hazard Zone Color	Comments	Additional Notes
					High	Medium	Low			
Support Areas										
Men's Toilet/Shower Area	64	1	94	3	282	270	12			
Women's Toilet/Shower Area	64	1	94	1	96	96				
Men's Locker Area	21.0	10	210	14	412	1,508	412			include 12-12" lockers in addition include 6-12" lockers in addition
Women's Locker Area	21.0	10	210	14	412	1,508	412			
Fitness Room	50	1	50	1	50	50				
Radio Room	100	1	100	1	100	100				
General Storage	660	5	660	5	660	660				
Firing Range	150	1	150	1	150	150				
Range Control Room	300	1	300	1	300	300				
Range Mechanical Room	200	1	200	1	200	200				
Range Weapons Cleaning	400	1	400	1	400	400				
Range Weapons & Ammunition	39	1	39	1	39	39				
Training Simulator	100	0	100	0	100	100				
Janitor Closet	64	1	64	1	64	64				
Laundry	200	1	200	1	200	200				
Totals:										
Operations Areas										
Dispatch Toilet (Unisex)	64	1	64	1	64	64				
Dispatch Toilet / Staff Entrance	200	1	200	1	200	200				
Dispatch Breakroom / Staff Entrance	200	1	200	1	200	200				
Dispatch Supervisor	125	3	125	3	125	125				
Dispatch Stations	58	1	58	1	58	58				
Detention Staff Toilet - Men	58	1	58	1	58	58				
Detention Staff Toilet - Women	48	1	48	1	48	48				
Detainee Shower	74	0	74	0	74	74				
Temp Holding Cell	74	5	74	5	74	74				
Detox Cell	74	2	74	2	74	74				
Single Occupant Cell - Male	200	1	200	1	200	200				
Single Occupant Cell - Female	74	1	74	1	74	74				
Booking / Processing	74	0	74	0	74	74				
Hard Interview	74	0	74	0	74	74				
Juvenile Interview	54	0	54	0	54	54				
Bail Officer	25	0	25	0	25	25				
Bail Release Vestibule	576	2	576	2	576	576				
Mantrap	576	1	576	1	576	576				
Vehicle Sally Port	60	1	60	1	60	60				
Vehicle Holding/Processing	120	5	120	5	120	120				
Tire Storage	72	0	72	0	72	72				
Found Items	30	0	30	0	30	30				
Bicycle Storage	30	1	30	1	30	30				
Kennel	120	1	120	1	120	120				
Mounted Patrol Gear Storage	150	1	150	1	150	150				
Armory, Weapons Cleaning, & Storage	300	1	300	1	300	300				
Evidence Processing	64	0	64	0	64	64				
Evidence Storage	64	0	64	0	64	64				
High Security Storage	64	0	64	0	64	64				
Egress Vestibule	64	0	64	0	64	64				
Totals:										
Visitor Areas										
Entry Vestibule / Waiting Area	64	1	64	1	64	64				
Entrance / Lobby / Waiting Area	200	1	200	1	200	200				
Greeter	100	0	100	0	100	100				
Men's Toilet Room	64	1	64	1	64	64				
Women's Toilet Room	200	0	200	0	200	200				
Permits Room	64	1	64	1	64	64				
Staff Memorial Area & Display Area	40	1	40	1	40	40				
Vending	40	1	40	1	40	40				
Other Visitor Areas	0	1	0	0	0	0				
Totals:										
Common Areas										
Training Room	27.0	50	1,875	50	1,350	1,234	0	116		
Training Room Break-Out & Storage	15%	1	282	1	282	212	70	0		
Training Materials Storage	5%	1	94	1	100	0	100	0		
Kitchenette	3%	1	57	1	65	0	50	0		
Hospitality	120	0	0	16	1,132	438	38	0		
Shared Conference Room	30	0	1,430	12	0	0	0	0		
Fitness	65	22	64	0	0	0	0	0		
Mail Delivery Room	64	1	39	0	0	286	0	0		
Janitor's Closet	39	1	0	0	0	80	0	0		
General Storage	100	0	0	0	0	3,455	3,382	323	116	
Staff Entrance Vestibule (basement)	0	0	0	0	0	0	0	0		
Totals:										
Infrastructure Areas										
Elevator	60	2	120	3	180	180				
Elevator Machine Room	60	1	60	1	62	62				
Stairs	348	4	1,392	6	582	2,088				
Mechanical Room	500	1	500	1	200	582				
Water Entry / Sprinkler	150	1	150	1	312	312				
Electrical Room	250	1	250	1	0	0				
Electrical Closet	36	0	0	2	82	82				
Communications Closet (IDF)	36	1	200	1	432	432				
Communications Closet (IDF)	200	0	0	0	215	215				
MDF (Main Distribution Framework)	150	0	0	0	0	0				
Site Maintenance Equipment	0	0	0	0	0	0				
Other Infrastructure Space	0	0	0	0	0	0				
Totals:										
SUB TOTALS										

Actual size to be determined
Actual size to be determined
Between Lobby & Dispatch
1 Acc Tlt, 1 Lav
1 Acc Tlt, 1 Lav
In Soft Interview Room
In Lobby
In Lobby if needed

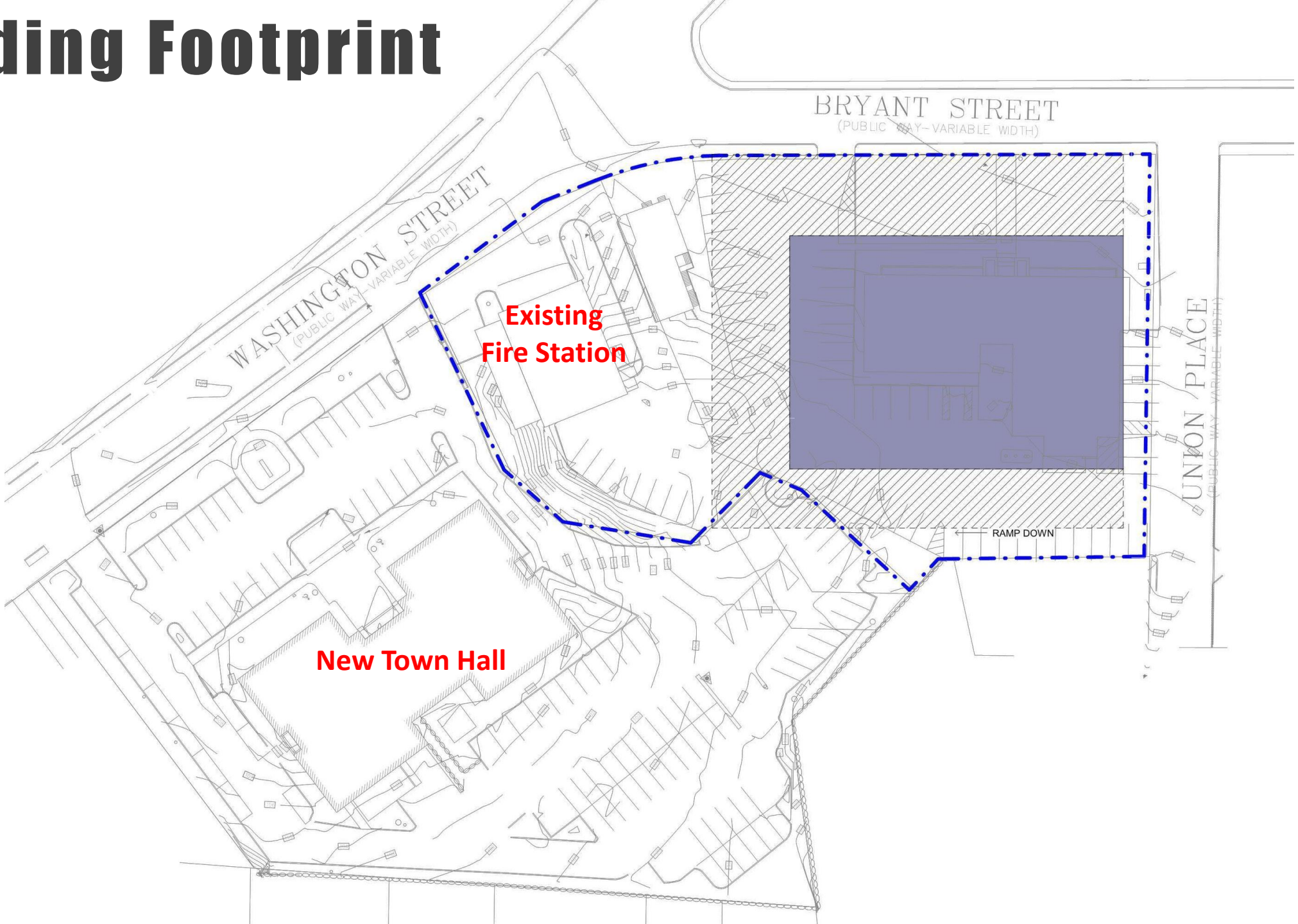
Size varies per project
Size varies per project
calculated minimum size per code
calculated minimum size per code
Size varies per project
Size varies per project
Size varies per project

Tables & Chairs
Theater Style
calculated % of Training Room
calculated % of Training Room
Open Floor Space

Fire Request = 50/50, Police Request = 55/75
In Break-Out & Storage Room
In Training Room
In Training Room
Fire Request = 8, Police Request = 16
Fire Request = 4, Police Request = 6

calculated per floor level
of shafts x floor levels
verify Space Needs
verify Space Needs
Shop vac, snow thrower, etc.

Building Footprint



**Existing
Fire Station**

New Town Hall

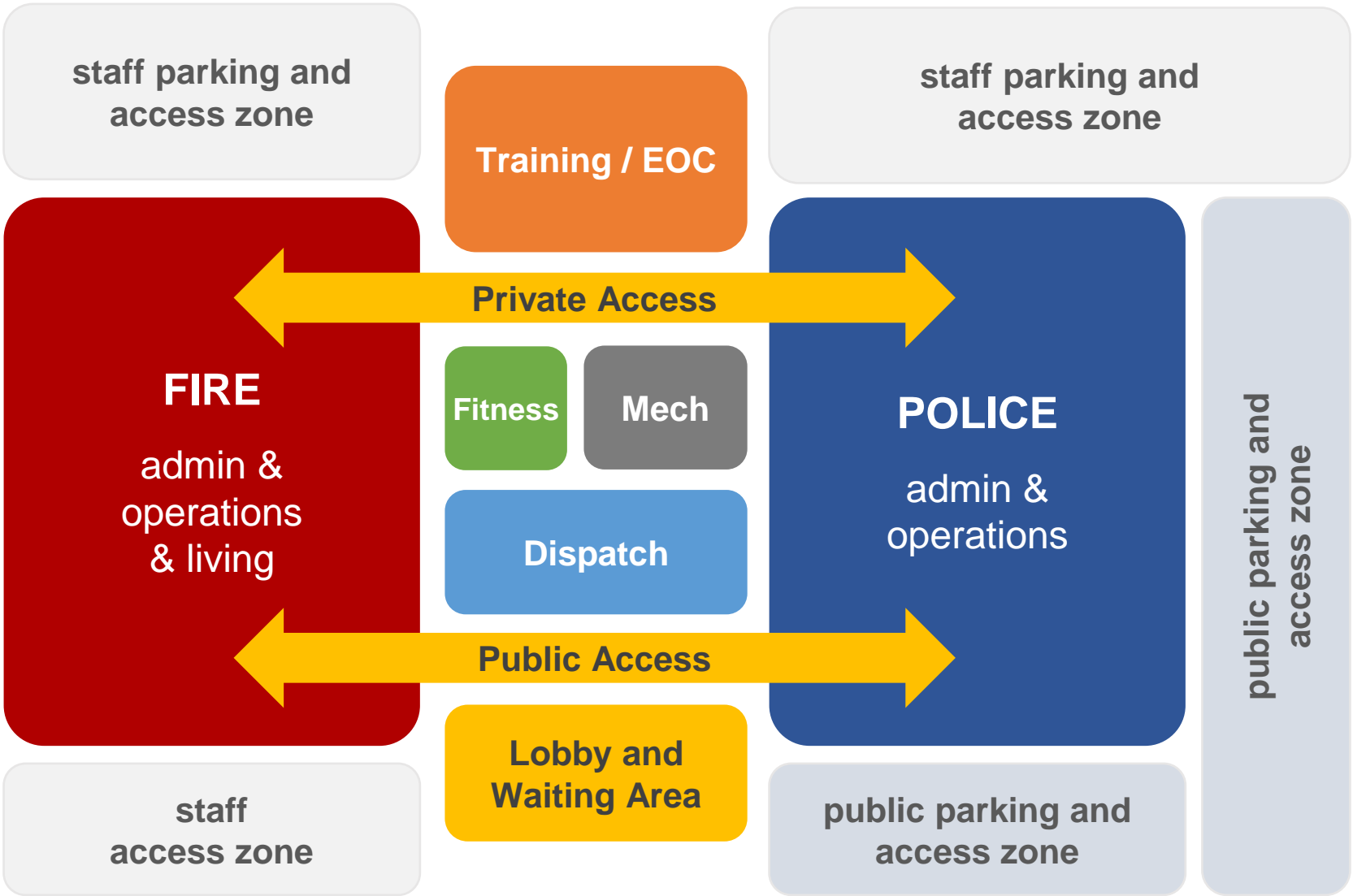
WASHINGTON STREET
(PUBLIC WAY - VARIABLE WIDTH)

BRYANT STREET
(PUBLIC WAY - VARIABLE WIDTH)

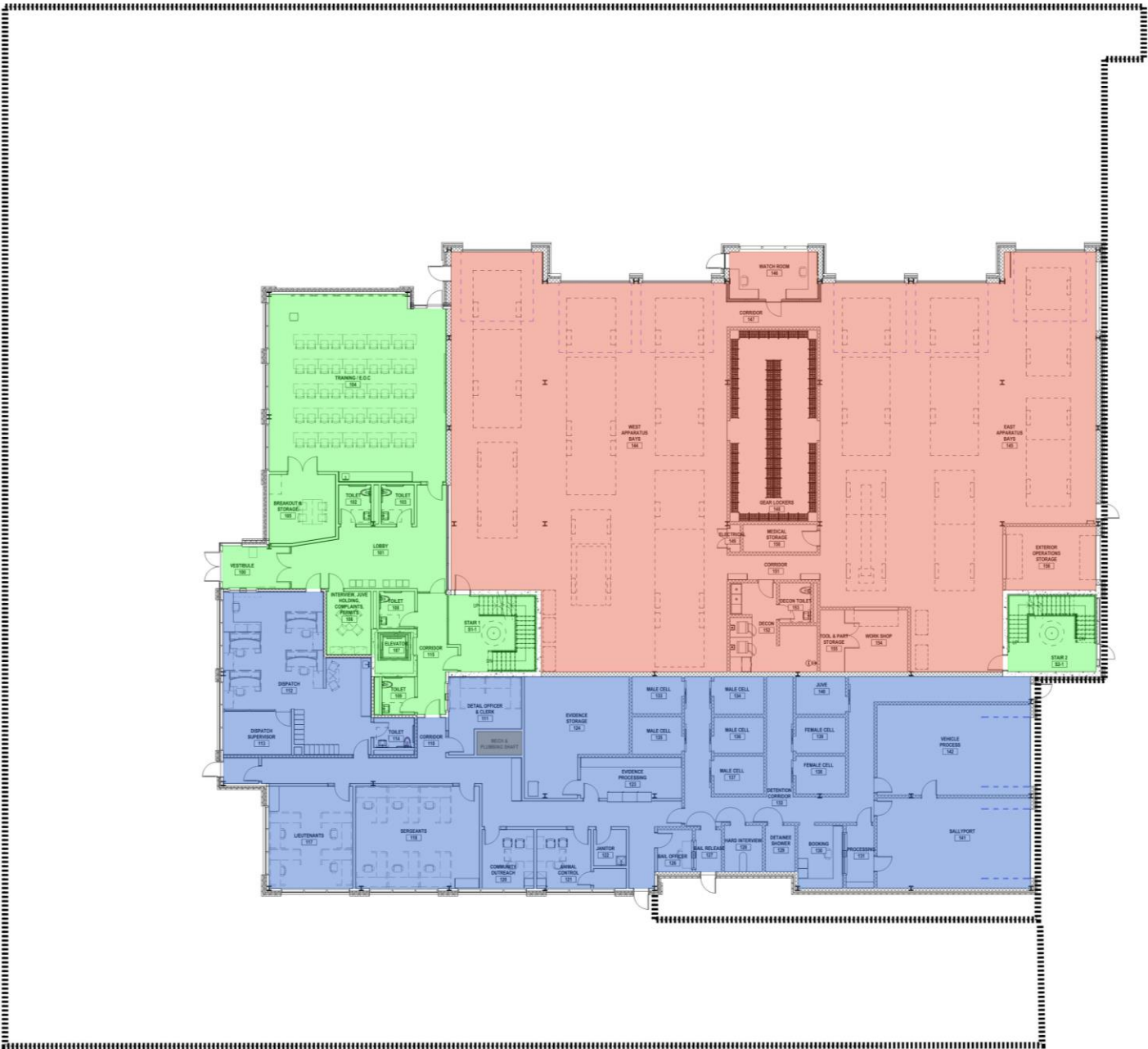
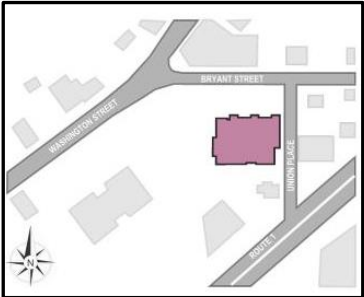
UNION PLACE
(PUBLIC WAY - VARIABLE WIDTH)

RAMP DOWN

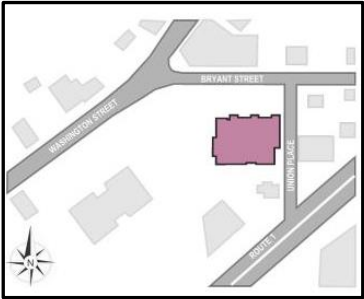
Space Planning Diagram



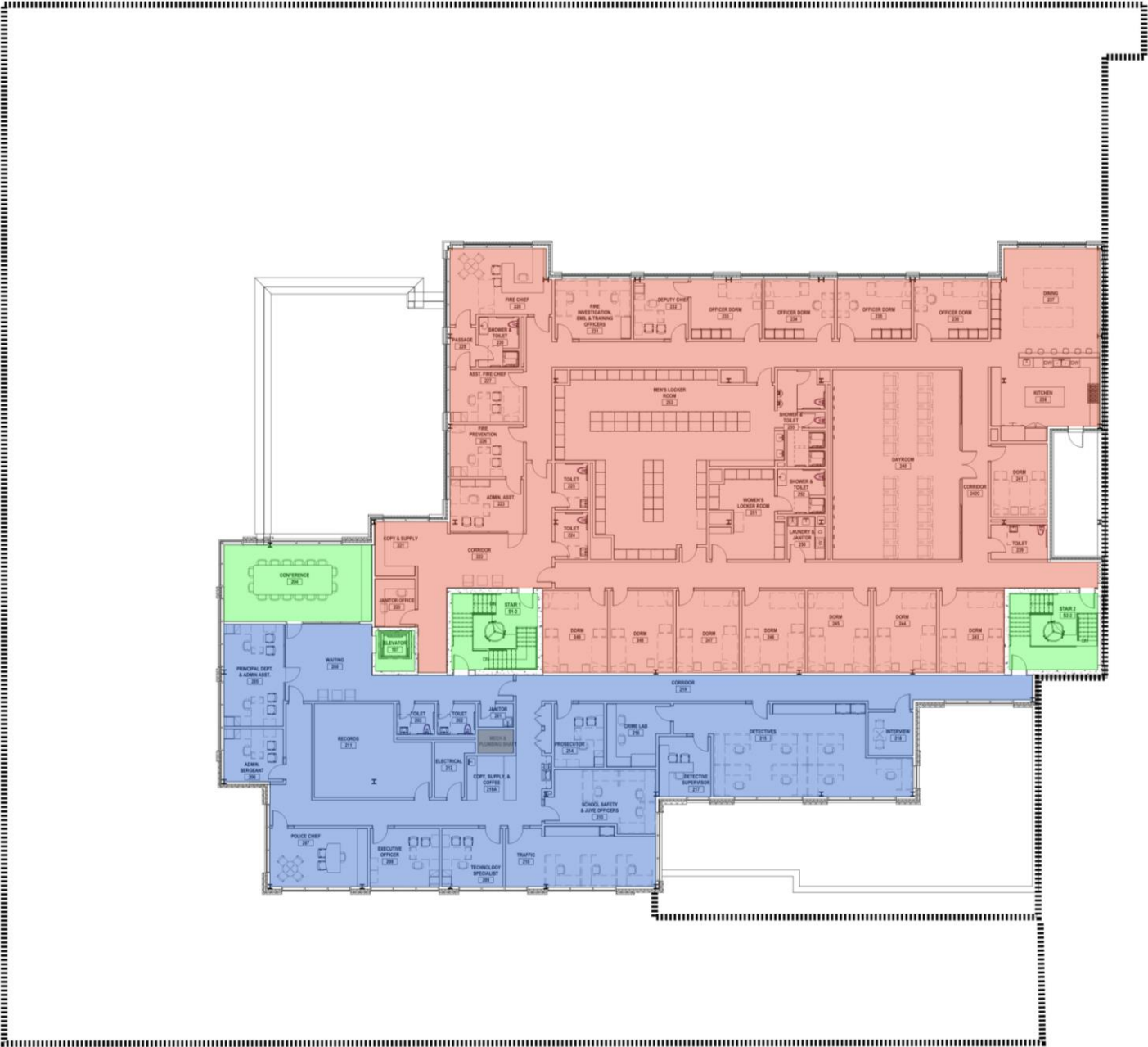
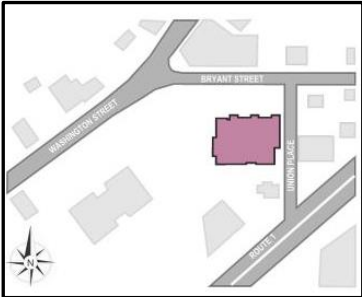
Schematic – Level 1



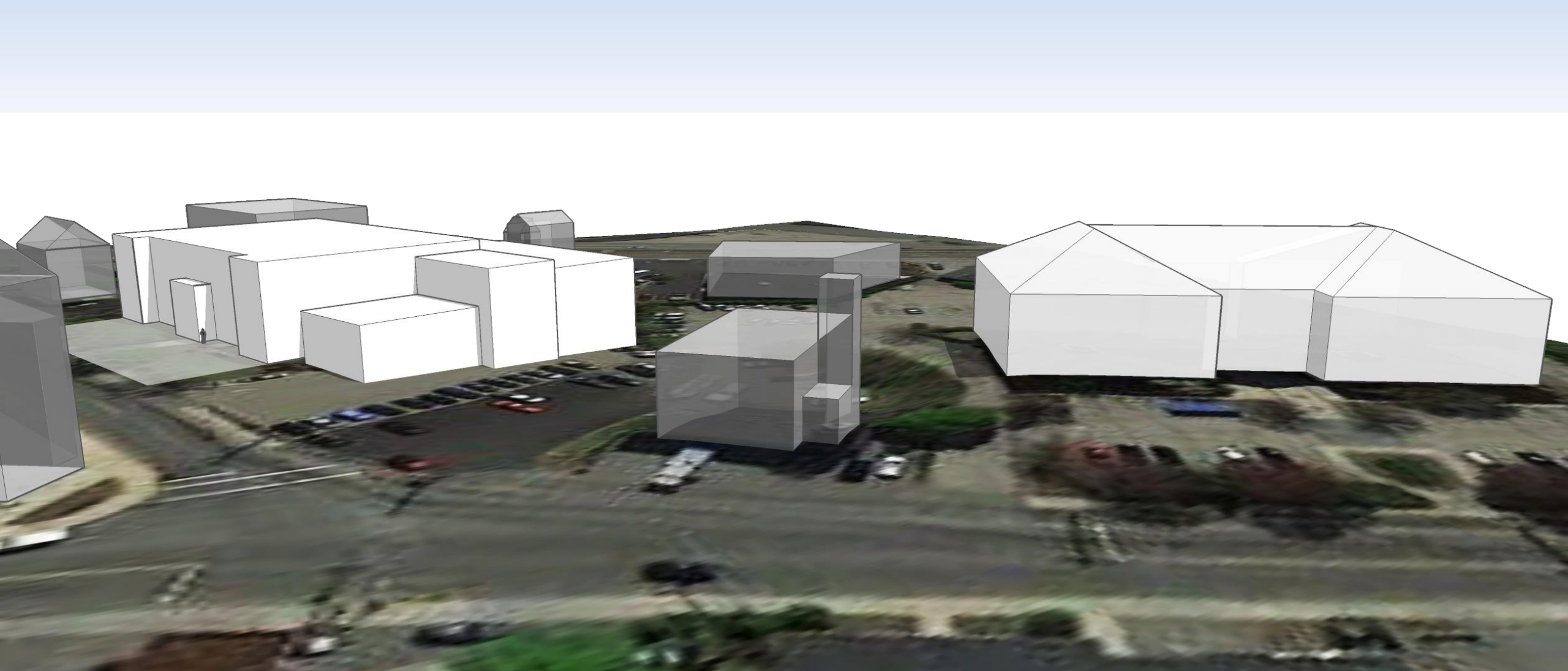
Schematic – Level 0 – Underground Parking



Schematic – Level 2



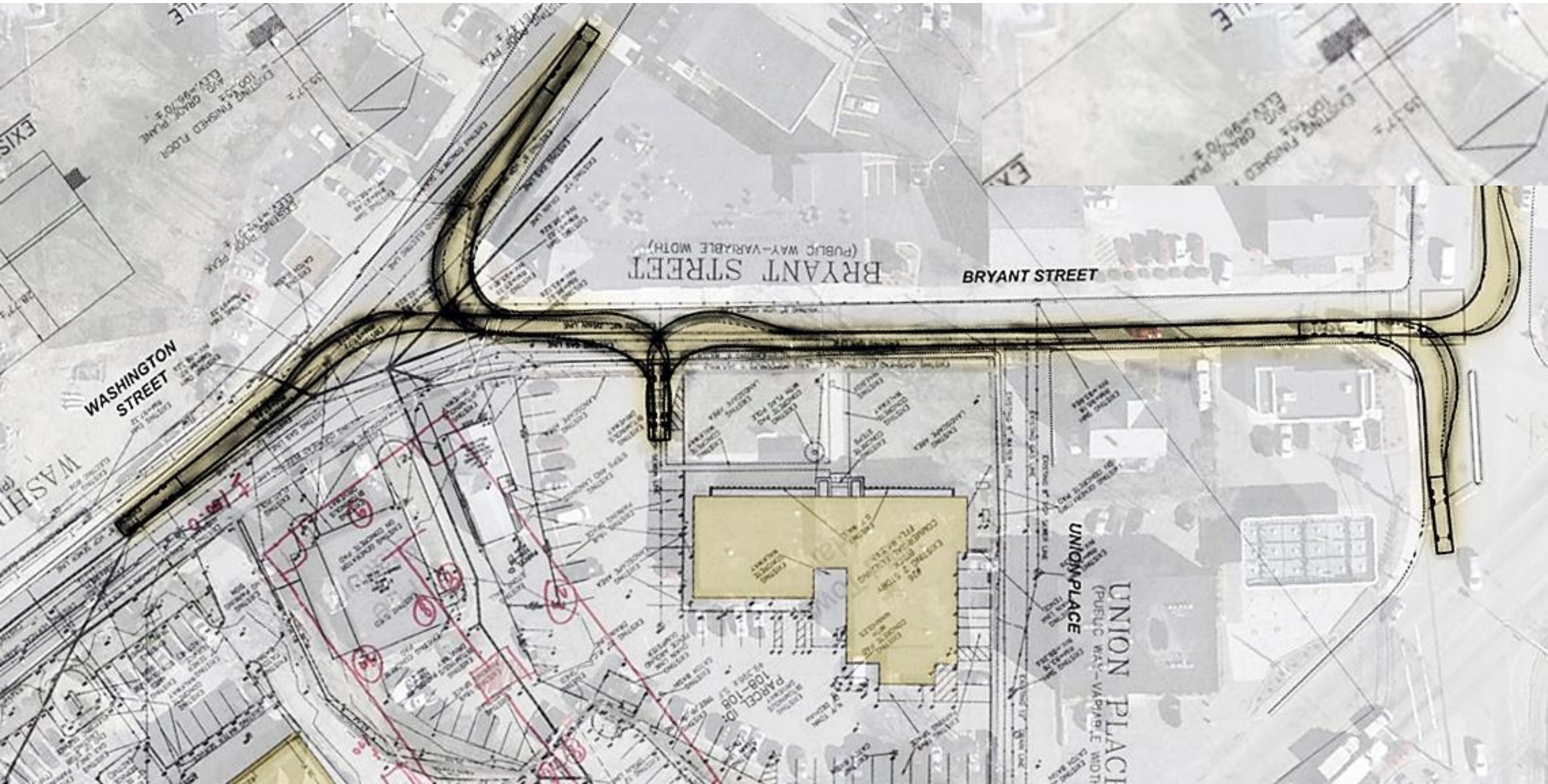
Initial Massing



Initial Massing



Turning Radius Study



Traffic Study - Results

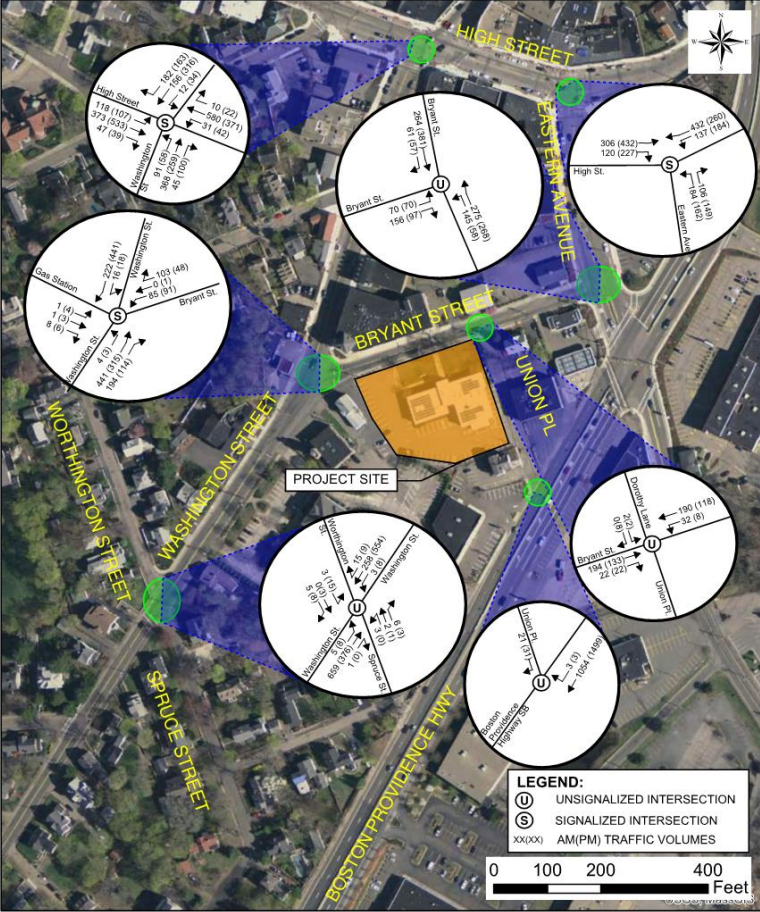


Figure 5: Existing Volumes
 New Public Safety Building
 Dedham, MA

Data Source: MassGIS
 Nitsch Project #11906

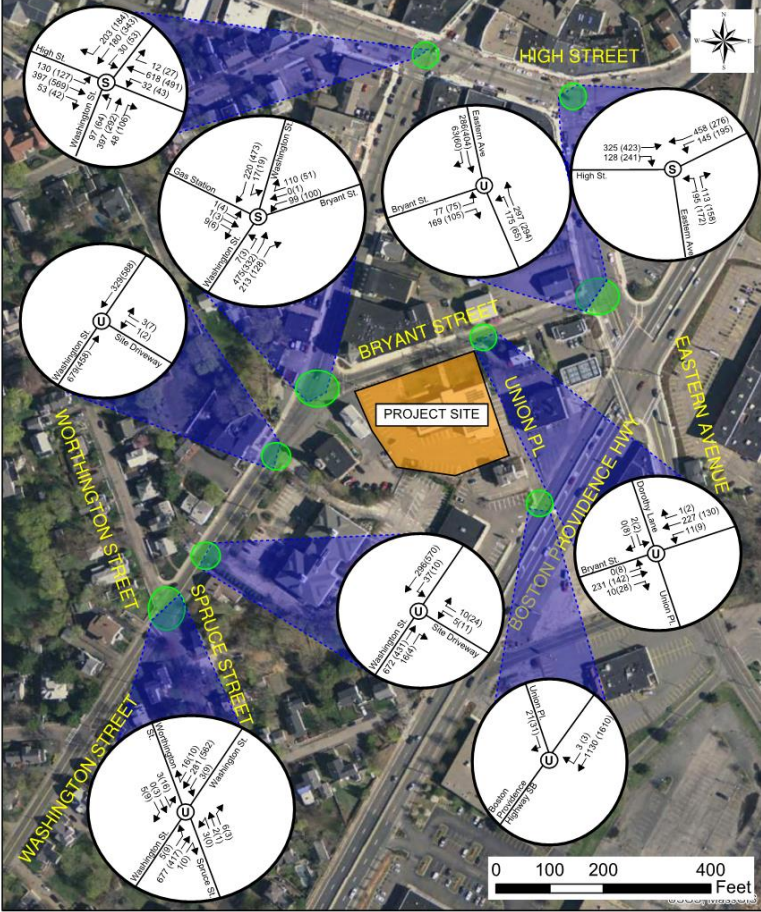


Figure 6: Future Volumes No Build
 New Public Safety Building
 Dedham, MA

Data Source: MassGIS
 Nitsch Project #11906

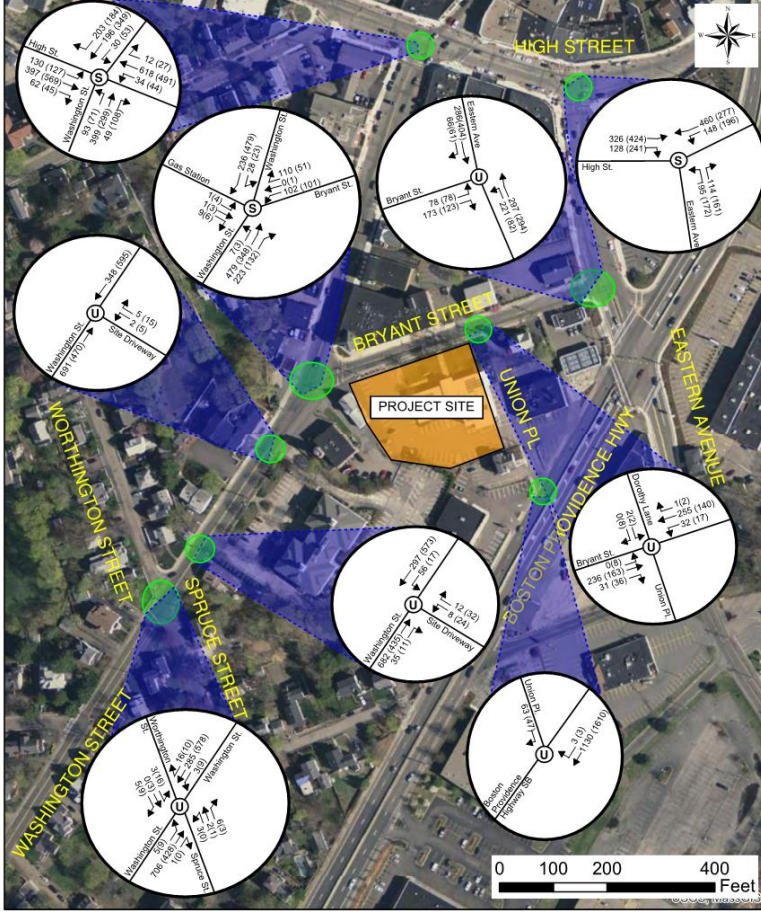


Figure 9: Future Volumes - Build
 New Public Safety Building
 Dedham, MA

Data Source: MassGIS
 Nitsch Project #11906



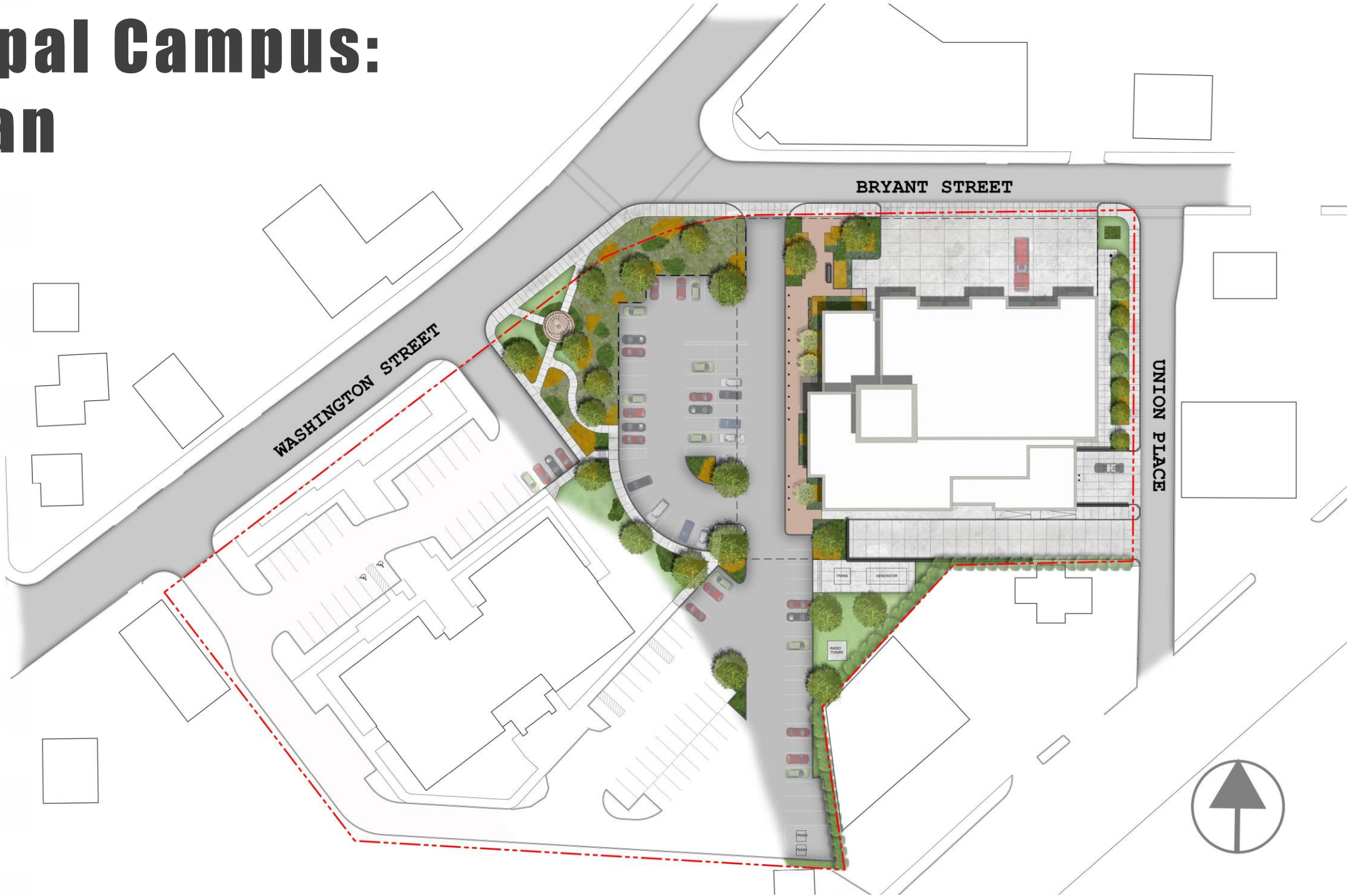
Municipal Campus: Public Safety



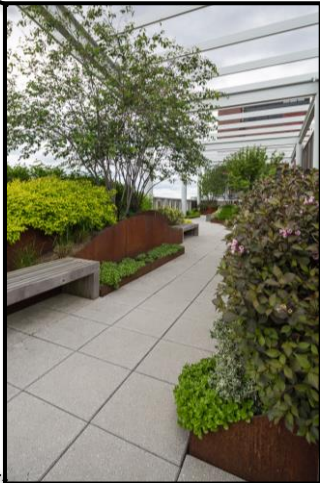
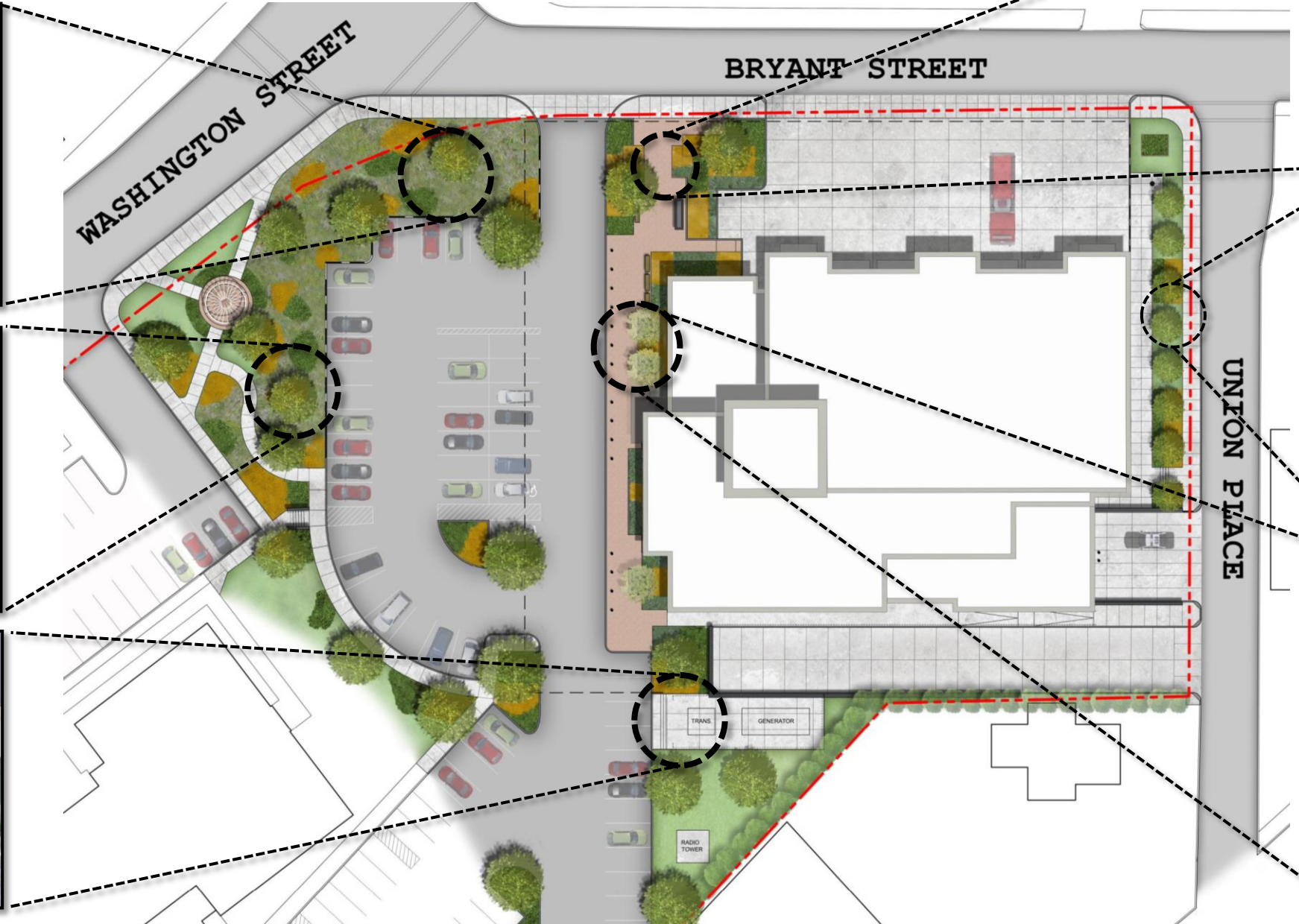
Municipal Campus: Integrated Parking



Municipal Campus: Site Plan



Site Features



Schematic Design - Massing



Schematic Design - Animation